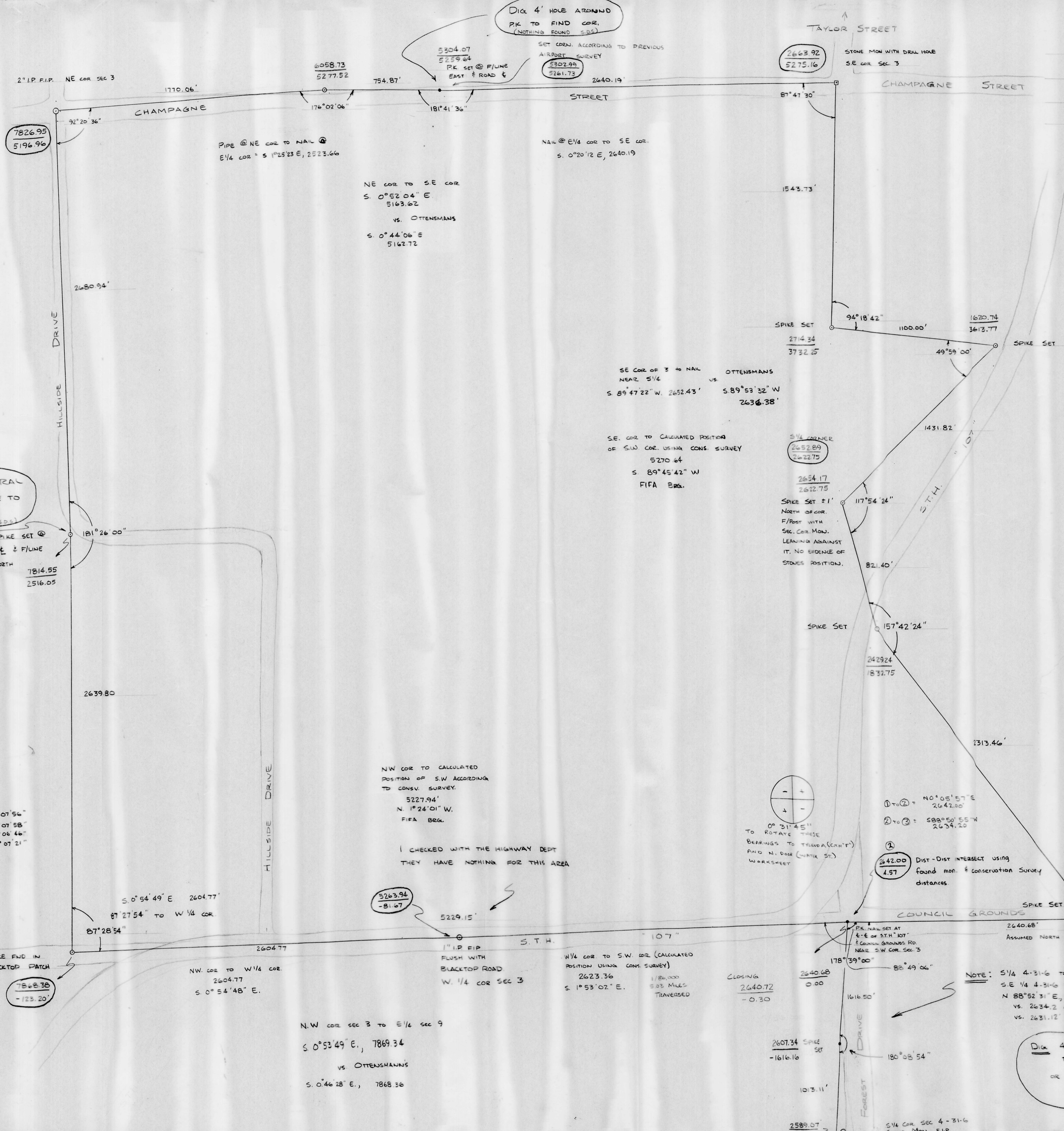


MERRILL CHAMPAGNE

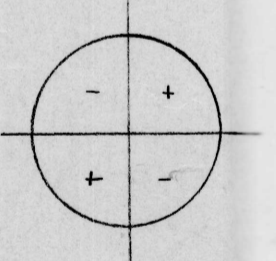
MERRILL (CHAMPAGNE ST)  
SEC. 3 T 31 N R 6 E  
MERRILL TOWNSHIP  
LINCOLN COUNTY, WIS.

NOTE: COORDINATES CIRCLED  
IN RED ARE CORRECT  
CORNER POSITIONS



DIG IN GENERAL  
AREA DONT HAVE TO  
GO VERY DEED  
(NOTHING FOUND 500)

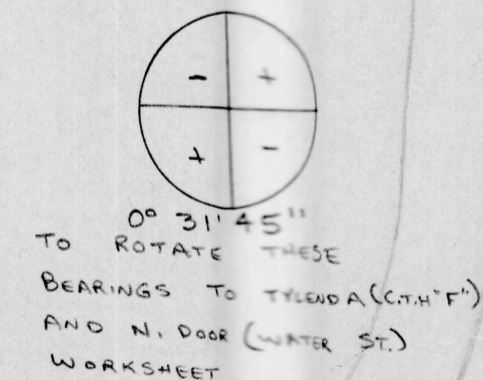
PRORATED TO  
78 47.67  
25 36.88  
NE COR TO NW COR  
N 89° 33' 14" W  
5320.32  
vs.  
OTTENSMAN'S  
N 89° 25' 18" W  
5319.40'



BEARING SHIFT  
OTTENSMAN TO F.I.F.A.  
N LINE N 89° 25' 18" W - N 89° 33' 14" W = 0° 07' 56"  
E " S 0° 44' 06" E - S 0° 52' 04" E = 0° 07' 58"  
S " S 89° 34' 48" W - S 89° 27' 27" W = 0° 06' 46"  
W " S 0° 46' 28" E - S 0° 53' 49" E = 0° 07' 21"

NW COR TO CALCULATED  
POSITION OF S.W. ACCORDING  
TO CONSV. SURVEY.  
5227.94'  
N 1° 24' 01" W.  
FIFA BRG.

I CHECKED WITH THE HIGHWAY DEPT  
THEY HAVE NOTHING FOR THIS AREA



① to ② = N 0° 05' 57" E  
2642.00  
② to ③ = S 82° 50' 55" W  
2634.20

①  
2642.00  
4.57  
Dist-Dist INTERSECT USING  
found mon. & conservation survey  
distances.

NOTE: S 1/4 4-31-6 TO PK. NEAR  
S E 1/4 4-31-6:  
N 88° 52' 31" E, 2629.61'  
vs. 2634.2' ON CONSERVATION SURVEY  
vs. 2631.12' ON OTTENSMAN SURVEY

NOTE: E 1/4 COR 9-31-6 TO PK. NEAR  
S E COR 4-31-6:  
North 2640.68'  
vs. 2642.0' ON CONSV. SURVEY  
vs. 2640.43 ON OTT. SURVEY

DIG 4' E & 1.4 N OF PK.  
TO FIND CONSERVATION CORNER  
OR  
30' E & .25 SOUTH TO FIND  
OTTENSMAN 2" I.P.

N.W. COR SEC 3 TO E 1/4 SEC 9  
S 0° 53' 49" E, 7869.34  
vs. OTTENSMAN'S  
S 0° 46' 28" E, 7868.36

CLOSING  
2640.72  
-0.30

W 1/4 COR TO S.W. COR (CALCULATED  
POSITION USING CONSV. SURVEY)  
2623.36  
S 1° 53' 02" E.  
1/20,000  
503 MILES  
TRANVERSED

1" I.P. F.I.P.  
FLUSH WITH  
BLACKTOP ROAD  
W. 1/4 COR SEC 3

N.W. COR TO W 1/4 COR  
2604.77  
S 0° 54' 48" E.

S 0° 54' 49" E 2604.77'  
87° 27' 54" TO W 1/4 COR  
87° 28' 54"

SPIKE FND IN  
BLACKTOP PATCH  
78 68.38  
-123.20'

2607.34  
-1616.16

2589.07  
-2629.10

S 1/4 COR SEC 4-31-6  
STONE MON. F.I.P.