

15000 (20000)

SCALE 1" = 100'

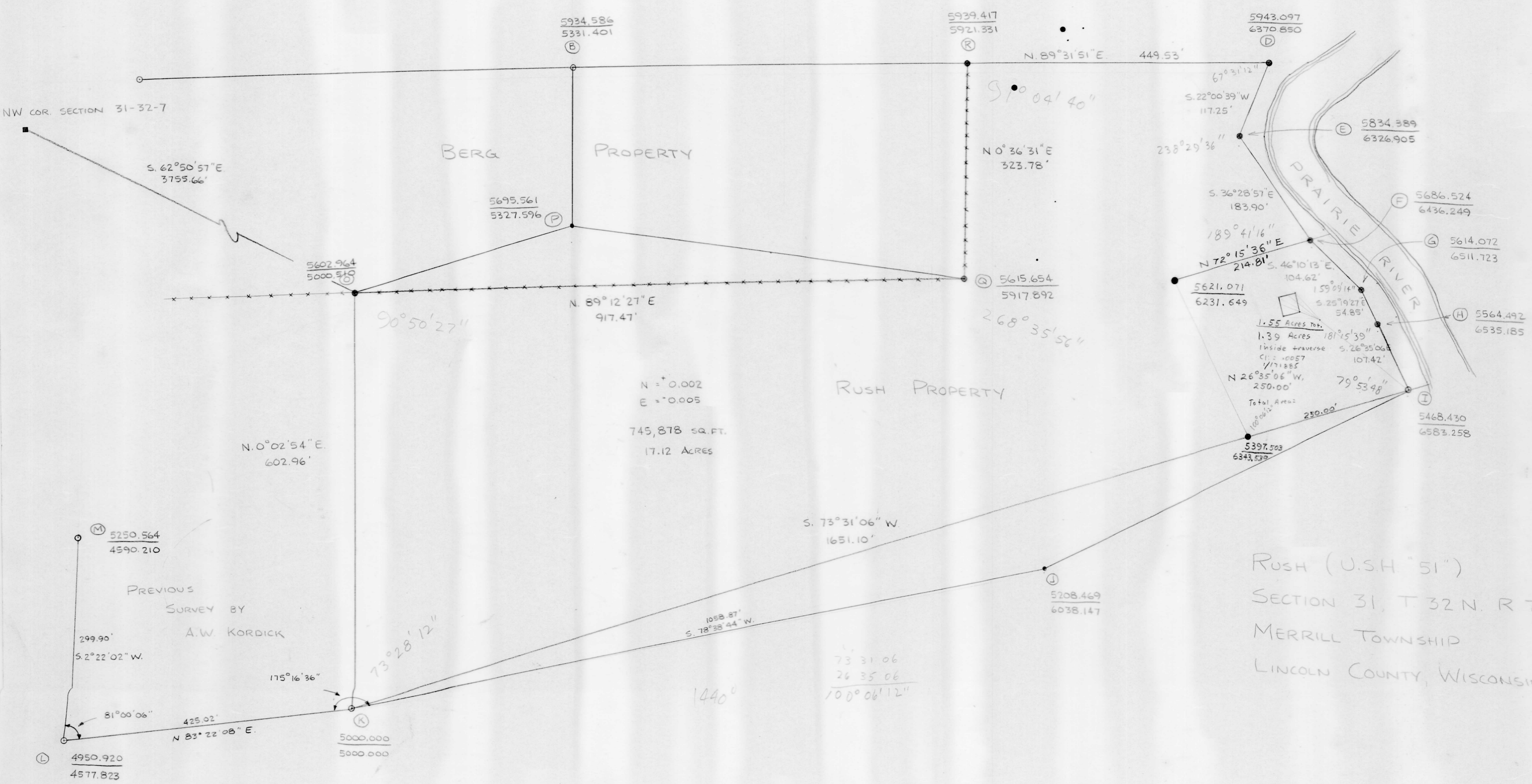
KRAFT PROPERTY

BERG PROPERTY

RUSH PROPERTY

RUSH (U.S.H. 51)
SECTION 31, T 32 N. R 7 E.
MERRILL TOWNSHIP
LINCOLN COUNTY, WISCONSIN

NW COR. SECTION 31-32-7



5934.586
5331.401
B

5939.417
5921.331
R

5943.097
6370.850
D

5834.389
6326.905
E

5686.524
6436.249
F

5614.072
6511.723
G

5564.492
6535.185
H

5468.430
6583.258
I

5397.503
6343.530
J

5208.469
6038.147
J

5602.964
5000.510
S

5615.654
5917.892
Q

5250.564
4590.210
M

4950.920
4577.823
L

5000.000
5000.000
K

N = +0.002
E = +0.005

745,878 SQ. FT.
17.12 ACRES

1058.87
S. 78°38'44" W.

73°31'06"
26°35'06"
100°06'12"

1440°

1.55 Acres Tot.
1.39 Acres
inside traverse
C1 = 10057
1/171885
Total Area =
250.00'



S. 62°50'57" E.
3755.66'

5695.561
5327.596
P

N. 89°31'51" E. 449.53'

S 1°04'40"

N 0°36'31" E
323.78'

67°31'12"
S. 22°00'39" W
117.25'

238°29'36"

S. 36°28'57" E
183.90'

189°41'16"

N 72°15'36" E
214.81'

5621.071
6231.649

104.62'
159°09'16"
S. 25°19'27" E
54.85'

N 26°35'06" W.
250.00'

79°53'48"

N. 0°02'54" E.
602.96'

N. 89°12'27" E
917.47'

90°50'27"

S. 73°31'06" W
1651.10'

299.90'
S. 2°22'02" W.

81°00'06"

425.02'
N 83°22'08" E.

175°16'36"

73°28'12"

PREVIOUS
SURVEY BY
A.W. KORDICK