

NOTE: THIS STONE WAS FOUND LAYING ON ITS SIDE, WE WERE TOLD BY THE FARMER THAT THE FROST HAD HEAVED IT UP OVER THE PAST 15+ YEARS, WE RESET IT AT THE POSITION OF THE BASE WHICH THE FARMER SAID WAS CORRECT

I-D = 5271.63
S. 88°52'56" E.

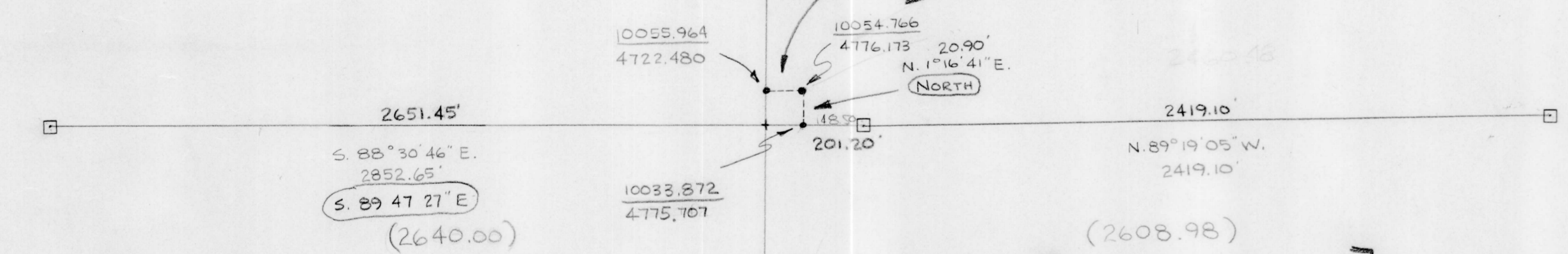
I-A = 2852.65
S. 88°30'46" E.

4-10
10,565.91
S. 1°04'11" W.

(5280.00)
5282.955 [5283.42]
S. 1°04'11" W [S. 0°29'14" W]

NOTE: AFTER TALKING THIS SITUATION OVER WITH STU FOLTZ I DECIDED TO DOUBLE PROPORTION THIS CORNER USING THE M.C. FOR LINE ONLY. THE M.C. ON THE WEST SIDE OF THE RIVER WAS SEARCHED FOR BUT NOT FOUND.

53.71' S. 88°43'19" E. (East)
DOUBLE PROPORTION NOT TO SCALE



(2608.98)
[NW COR 20-31-7 TO M.C. 202.36]
S. 82°35'05" E

(ORIGINAL DISTANCES) IN BRACKETS

5271.75 = 2651.45'
(5248.98) (2640.00)

5282.955' S. 1°04'11" W. [5283.03]
(5280.00) [S. 1°39'09" W]
S. 0°12'30" E

[N/4 OF 19 TO COMP NE COR.]
2651.46'
S. 88°57'52" E.

NOTE: (L) WAS AT PK. SET DURING ORIGINAL TRAVERSE (O) IS POSITION OF GRANITE MON. WHICH WAS FOUND WHEN DIGGING FOR EVIDENCE. A BERNTSEN MON WILL BE SET AT (D) POSITION.

5282.955
5282.955
10055.964
4722.480

NOTE: CIRCLED BEARINGS ARE ON S.P.C. GRID SYSTEM

