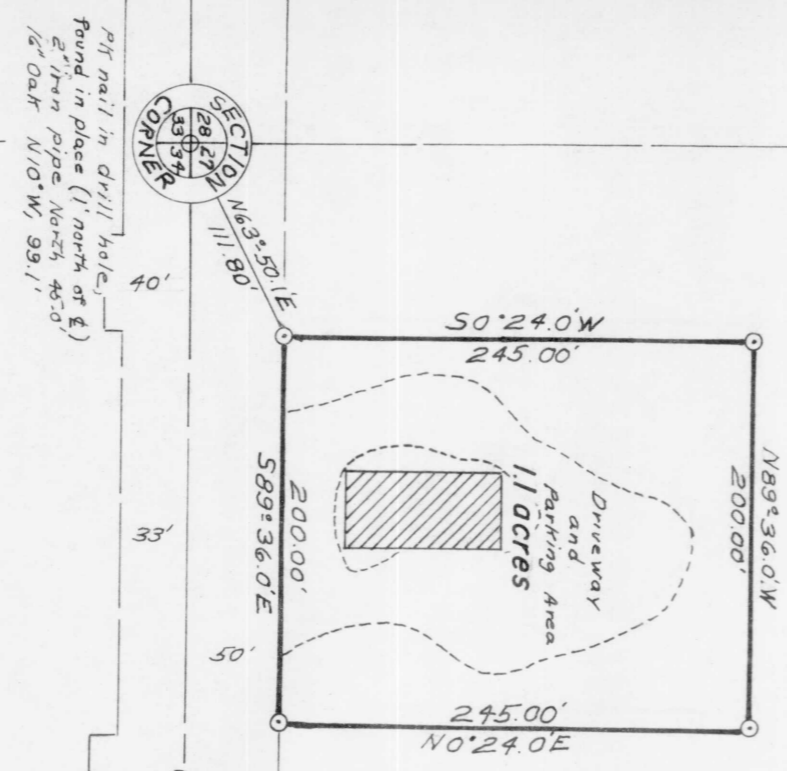


Bearings Solar

⊙ Iron rod set  
⊙ Rail Road Spike  
found in place.

A.  
P

191



PK nail in drill hole,  
found in place (1 north of E)  
2 1/2" iron pipe North 45.0'  
1/2" Oak N10°W, 99.1'

1/8 CORNER  
Rail road spike  
E of West of the E  
of High Way 57'.  
PK nail in Power Pole.  
N52°E, 64.3'  
Northwest corner of  
concrete base of  
Merrill Mason Mill 59n  
548°W, 82.0'

W.C.D. brass cap  
found in place.  
4" Spruce  
577'E, 33.3'

COUNTY

TRUNK

HIGHWAY

"C" "

1/8 CORNER

SECTION CORNER

U. S. 90'

HIGHWAY 90'

"51" 90'

Part of  
Assessors Plat No. 191  
of the  
City of Tomahawk  
in the  
**SW 1/4 of the SW 1/4**  
**SECTION 27, T35N, R6E**  
Lincoln County, Wisconsin



Northwoods  
Surveyors  
Inc.

*John H. Fisher*  
Land Surveyor

Scale 1"=100'

October, 1974