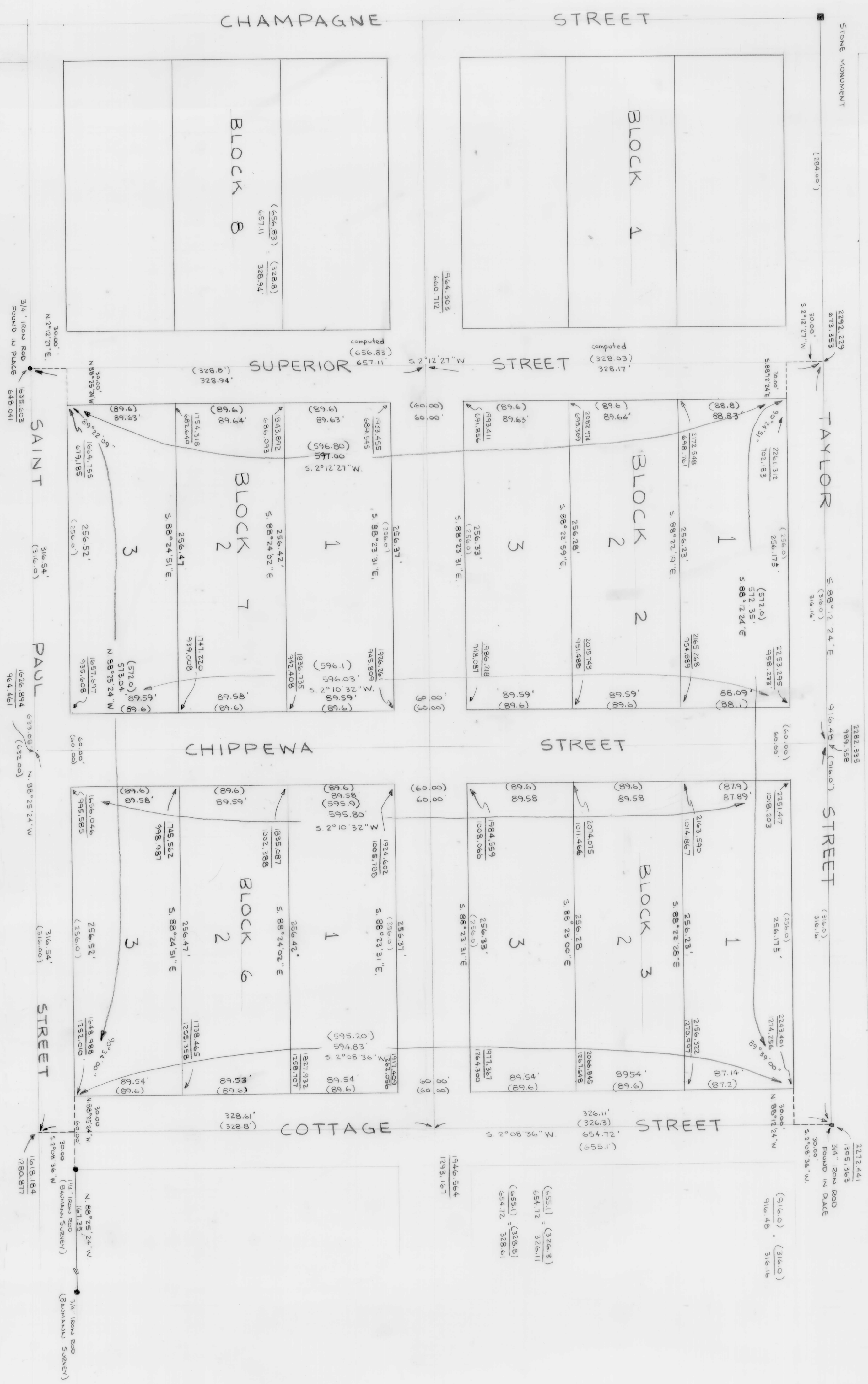


# MOOTZ - DIELS WORKSHEET



SCALE 1" = 50'

Mootz - Diels (Forest Park)  
Blocks 2, 3, 6 & 7  
Forest Park Addition  
NW 1/4, NW 1/4, Section 11, T.31N., R.6E,  
City of Merrill, Lincoln County, Wisconsin  
June 18, 1980

**LEGEND**  
 ( ) : RECORD DISTANCES SHOWN ON FOREST  
 PARK PLAT  
 COMPUTED BY S. D. SCHWARK