

REVISION DATE
9/11/90

ROUTE COUNTY
C.T.H. CC LINCOLN

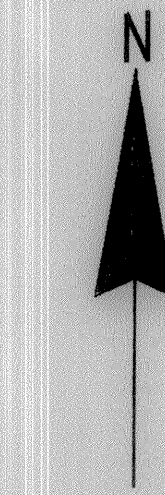
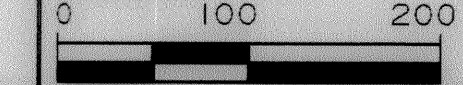
DATE

R/W PROJECT NUMBER
9408-02-00

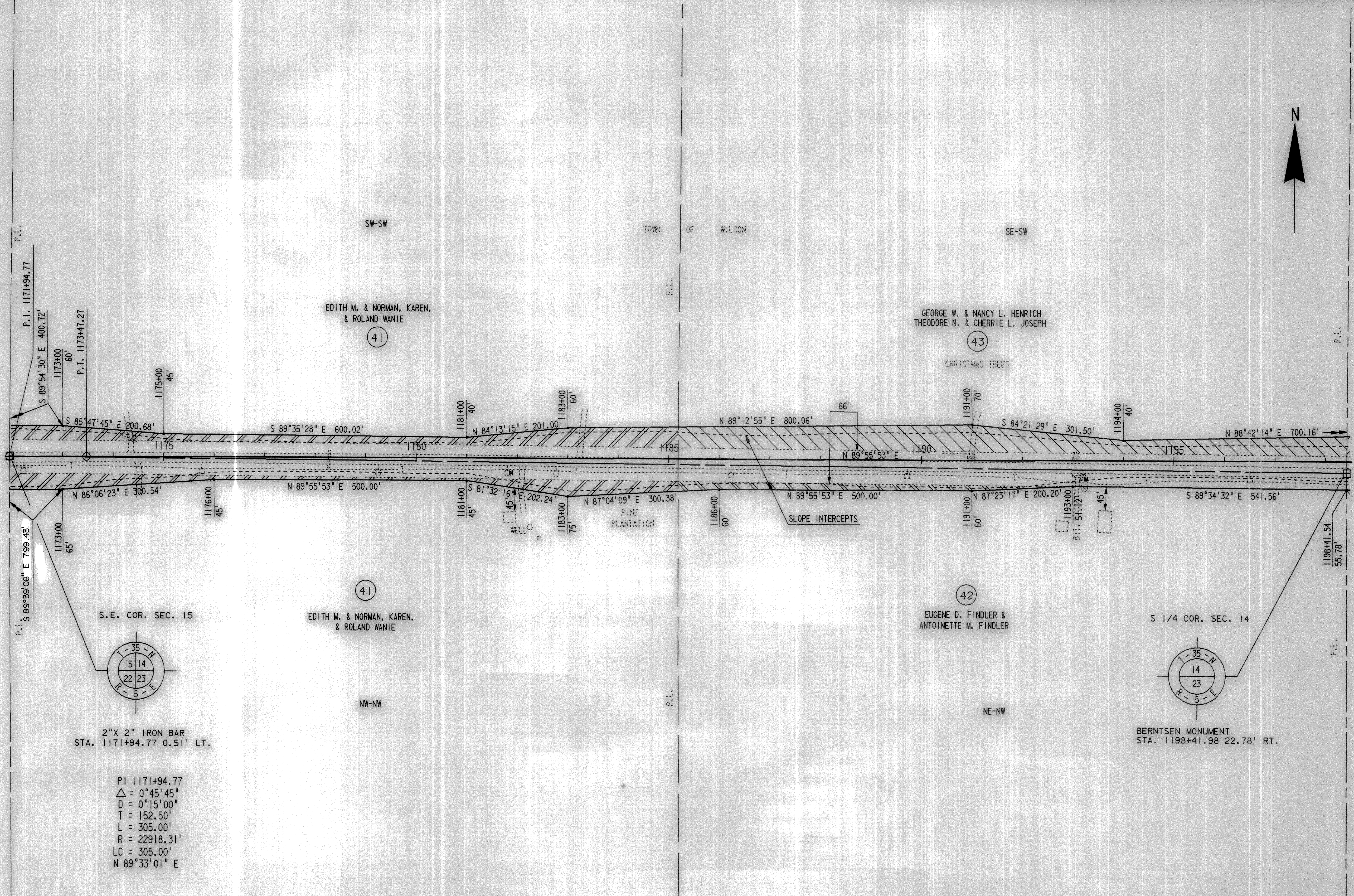
SHEET
NUMBER

SCALE, FT.

GRID FACTOR



LEVELS ON 42.3 45.6 48.9 51.2 53.5 55.8 58.1 60.4 62.7 65.0 67.3 69.6 71.9 74.2 76.5 78.8 81.1 83.4 85.7 88.0 90.3 92.6 94.9 97.2 99.5 101.8 104.1 106.4 108.7 111.0 113.3 115.6 117.9 120.2 122.5 124.8 127.1 129.4 131.7 134.0 136.3 138.6 140.9 143.2 145.5 147.8 150.1 152.4 154.7 157.0 159.3 161.6 163.9 166.2



P.I. 1171+94.77

S 89°54'30" E 400.72'

1173+00
60'

P.I. 1173+47.27

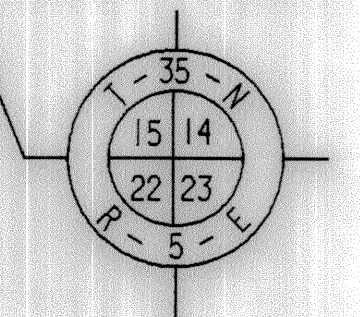
S 85°47'45" E 200.68'

1175+00
45'

P.I. S 89°39'06" E 799.43'

1173+00
65'

S.E. COR. SEC. 15



2" X 2" IRON BAR
STA. 1171+94.77 0.51' LT.

PI 1171+94.77
Δ = 0°45'45"
D = 0°15'00"
T = 152.50'
L = 305.00'
R = 22918.31'
LC = 305.00'
N 89°33'01" E

SW-SW

EDITH M. & NORMAN, KAREN,
& ROLAND WANIE

41

41

EDITH M. & NORMAN, KAREN,
& ROLAND WANIE

NW-NW

TOWN OF WILSON

SE-SW

GEORGE W. & NANCY L. HENRICH
THEODORE N. & CHERRIE L. JOSEPH

43

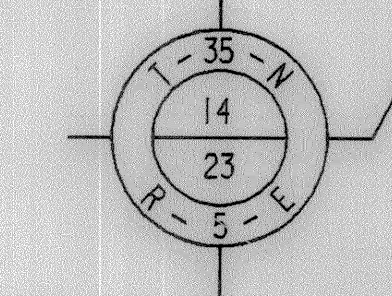
CHRISTMAS TREES

42

EUGENE D. FINDLER &
ANTOINETTE M. FINDLER

NE-NW

S 1/4 COR. SEC. 14



BERNTSEN MONUMENT
STA. 1198+41.98 22.78' RT.