

STA. 634+90 BEG. OF RELOC. ORDER
 DIV. JOB NO. 7213
 END OF RELOC. ORDER DIV. JOB NO. 7211
 STA. 634+90 END OF F-75 (2)
 BEG. OF F. 335 (7)

P.I. 661+48.4
 Δ = 4°-20' RT.
 D = 1°-00'
 T = 216.8
 L = 433.3

P.I. 691+00
 Δ = 00°-35' RT.
 D = 00°-15'
 T = 116.9
 L = 233.2

P.I. 726+05.1
 Δ = 17°-13' RT.
 D = 2°-00'
 T = 434.0
 L = 860.8

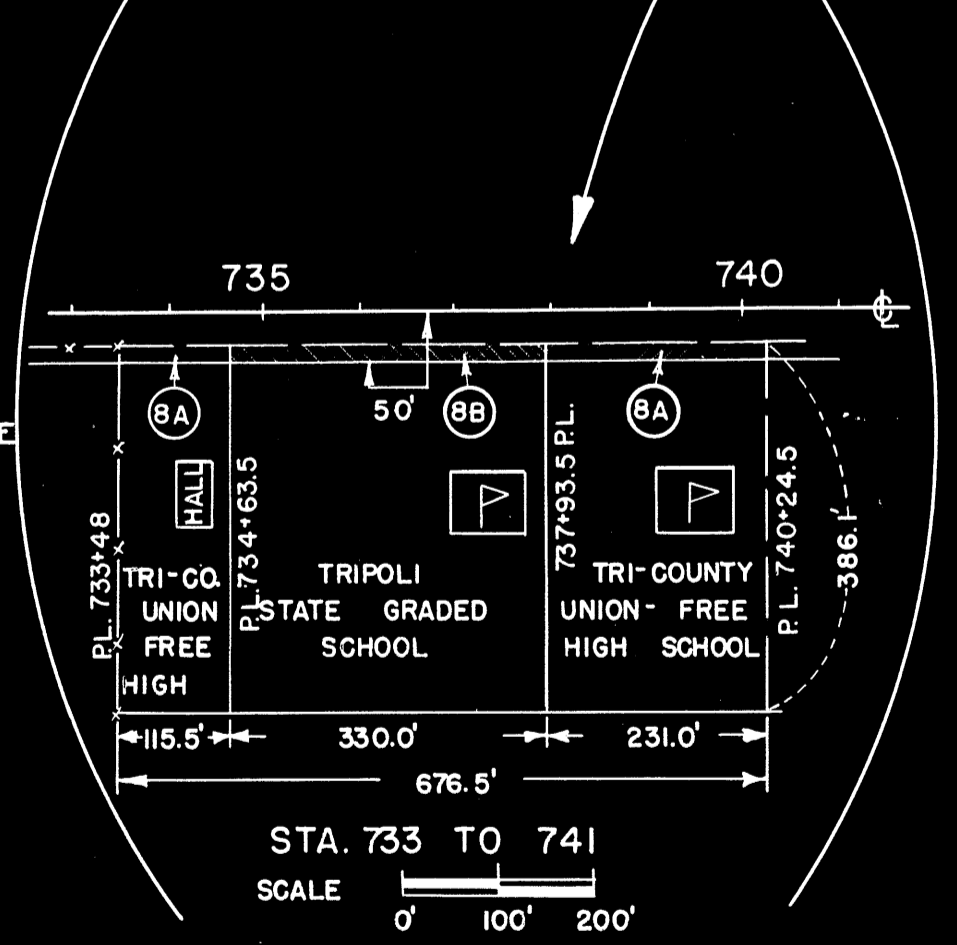
STA. 634+90 BEG. OF RELOC. ORDER
 DIV. JOB NO. 7213
 END OF RELOC. ORDER DIV. JOB NO. 7211

STA. 862+44 END OF RELOC. ORDER
 DIV. JOB NO. 7213
 BEG. OF RELOC. ORDER DIV. JOB NO. 7218

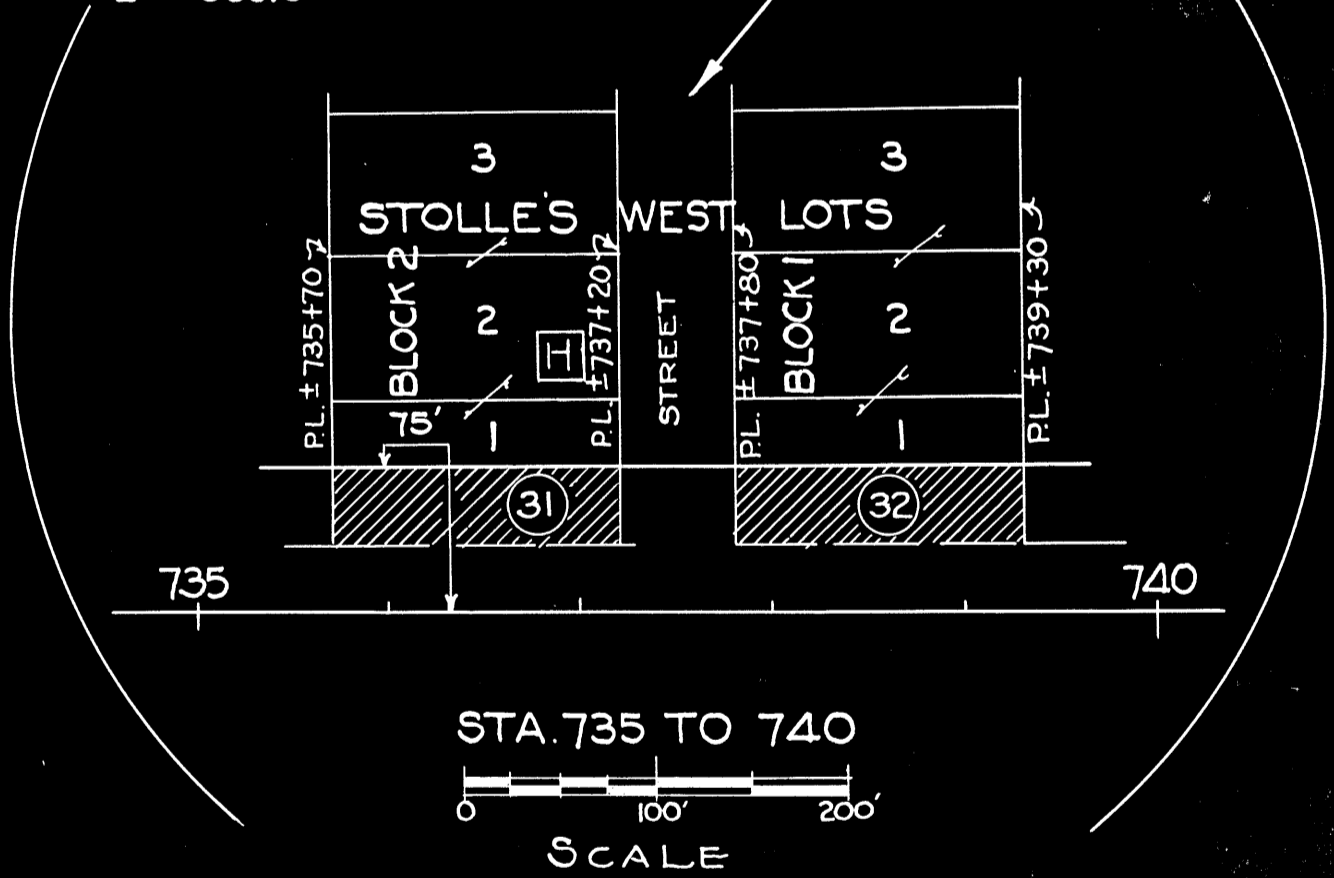
STATION EQUATION
 670+36.2 BACK = 672+70.5 AHEAD



LOCATION SKETCH
 0 1MI. 2MI.
 SCALE



STA. 733 TO 741
 SCALE 0' 100' 200'



STA. 735 TO 740
 SCALE 0' 100' 200'

DRAWN BY: M.B.B.
 COMPUTED BY: M.B.B.
 CHECKED BY: C.J.D.
 FIELD NOTE BOOKS: 8131 & 7586

DATED MAR 1, 1945

PLAT OF RIGHT OF WAY REQUIRED
 DIVISION JOB NO. 7213
 PRENTICE-CLIFFORD-McCORD ROAD
 U.S.H.NO. 8 ONEIDA AND LINCOLN COUNTY
 SCALE 0 400 800'