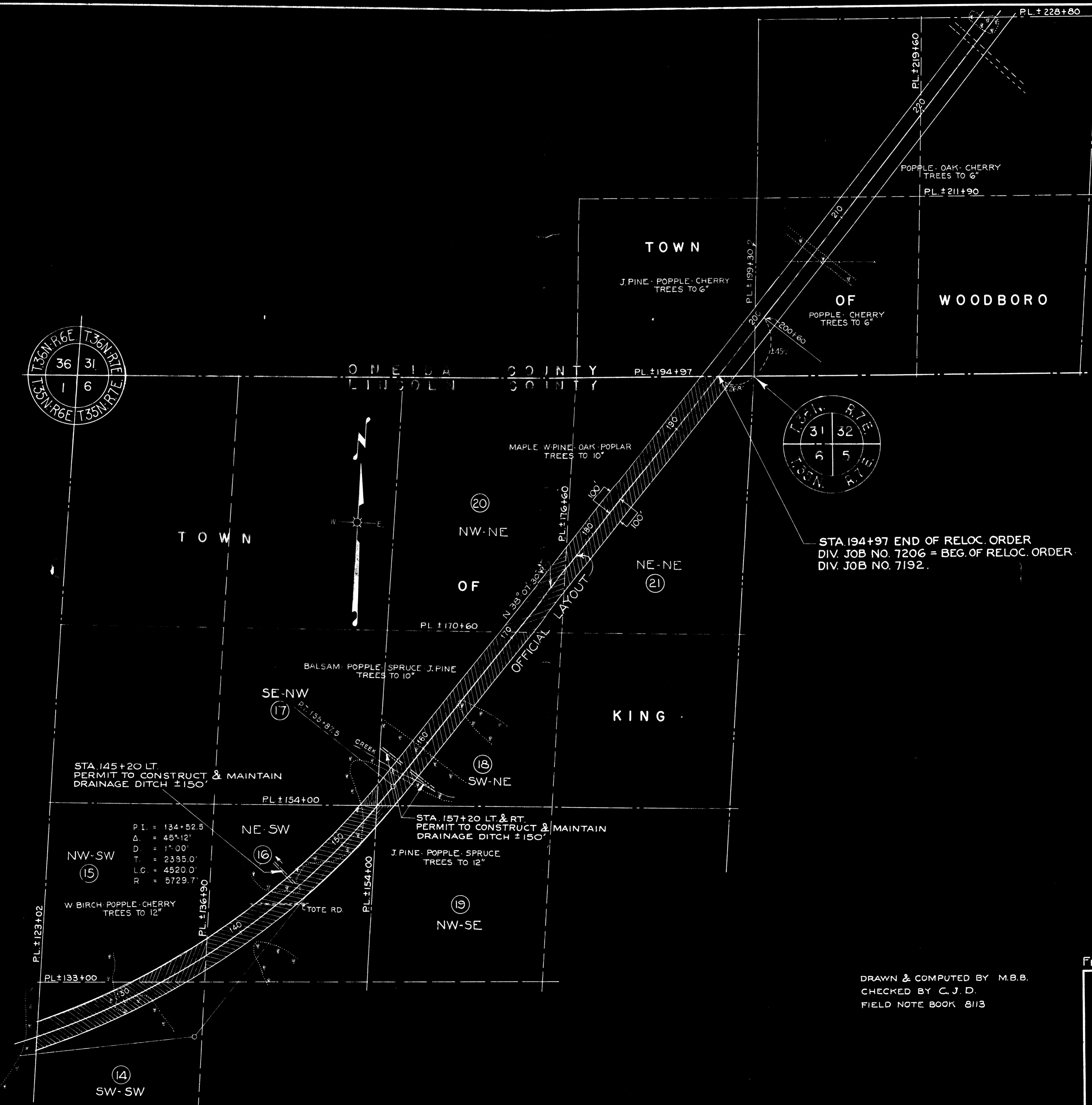
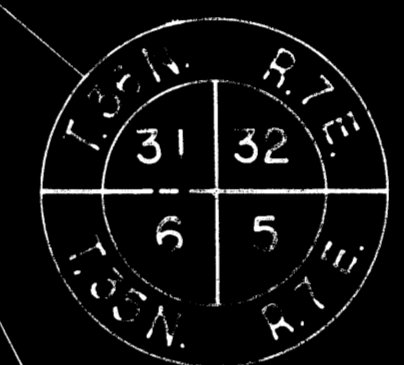
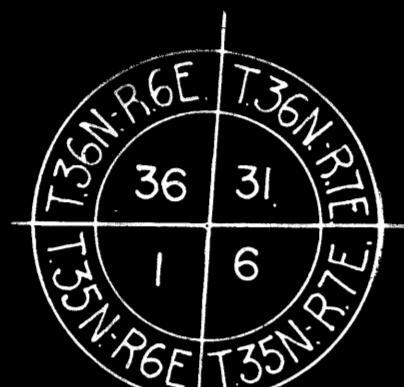


FED. ROAD DIST. NO.	STATE	FED. AID PROJ. NO.	SHEET NO.	TOTAL SHEETS
4	WIS.	500A(1)	6	

DIVISION JOB NO. 7206



STA 194+97 END OF RELOC. ORDER
 DIV. JOB NO. 7206 = BEG. OF RELOC. ORDER
 DIV. JOB NO. 7192.

P.I. = 134+52.5
 Δ = 45° 12'
 D = 1° 00'
 T = 2395.0'
 L.C. = 4520.0'
 R = 5729.7'

DRAWN & COMPUTED BY M.B.B.
 CHECKED BY C.J.D.
 FIELD NOTE BOOK 8113

FEB. 1, 1945

PLAT OF RIGHT OF WAY REQUIRED
 DIVISION JOB NO. 7206
 HEAFFORD JUNCTION - RHINELANDER ROAD
 U.S.H.NO. 8 LINCOLN COUNTY
 SCALE
 0 400' 800'