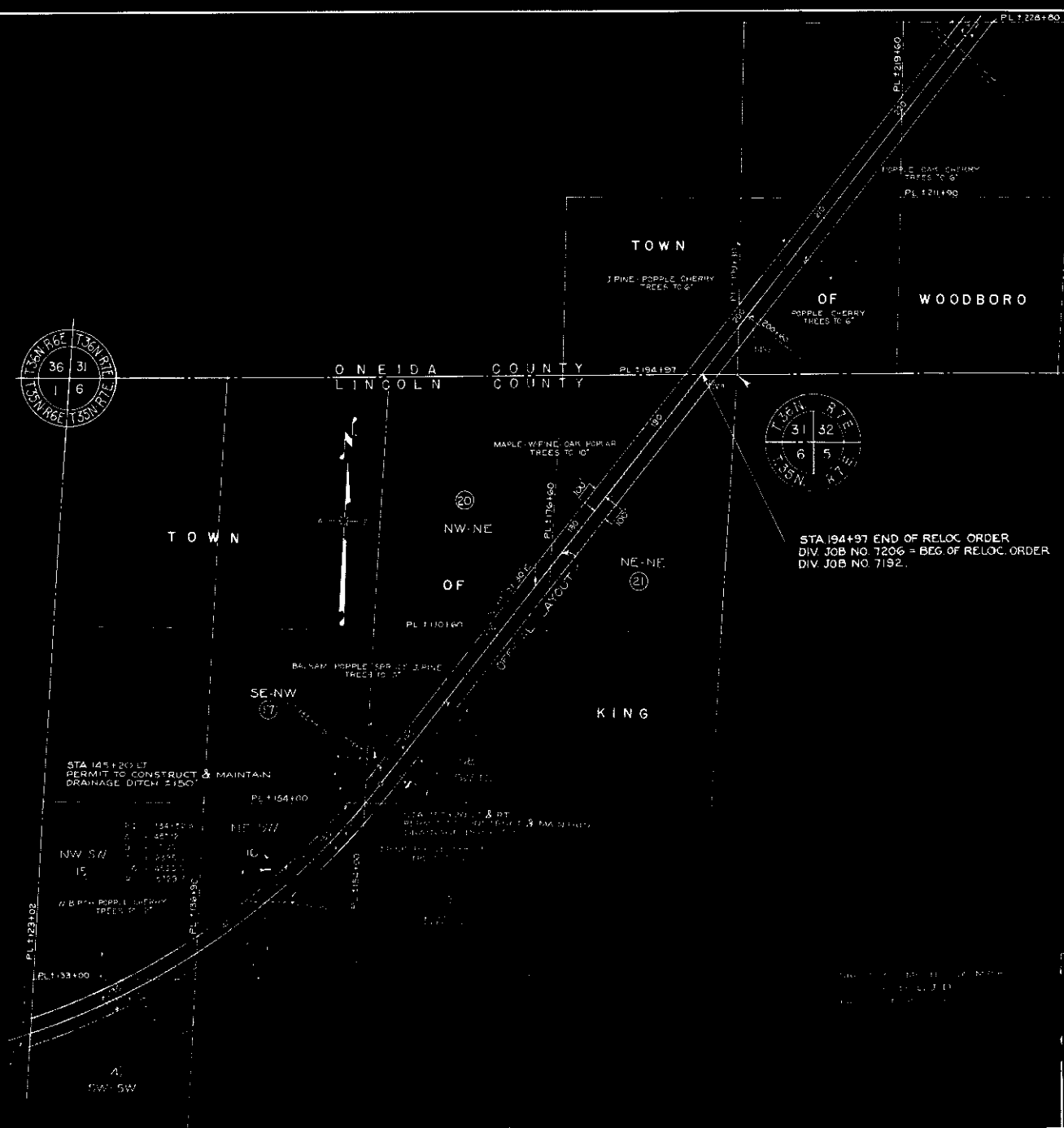


PLAN NO.	FFD NO.	NO.	TOTAL
4	500A(U)	6	PAGES

DIVISION JOB NO. 7206



STA 1944+97 END OF RELOC. ORDER
 DIV. JOB NO. 7206 = BEG. OF RELOC. ORDER
 DIV. JOB NO. 7132

STA 145+20.5 LT
 PERMIT TO CONSTRUCT & MAINTAIN
 DRAINAGE DITCH 5'100'

15	133+00	133+00
15	133+00	133+00
15	133+00	133+00
15	133+00	133+00
15	133+00	133+00
15	133+00	133+00

OPERATION V.A. REQUIRED
 DIVISION JOB NO. 7206
 HEAFFORD JUNCTION - RHINELANDER ROAD
 U.S. NO. 8 LINCOLN COUNTY