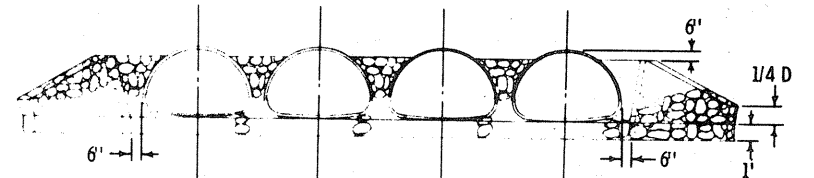
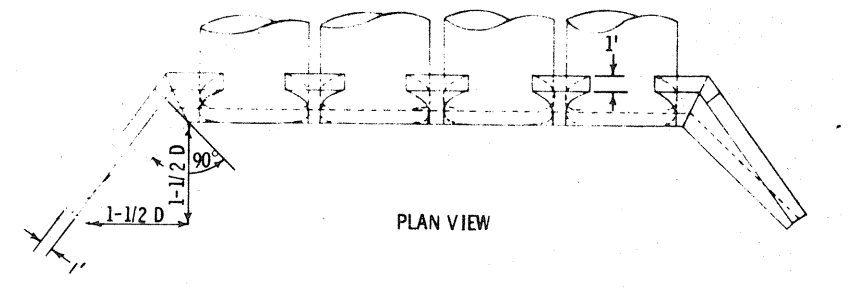
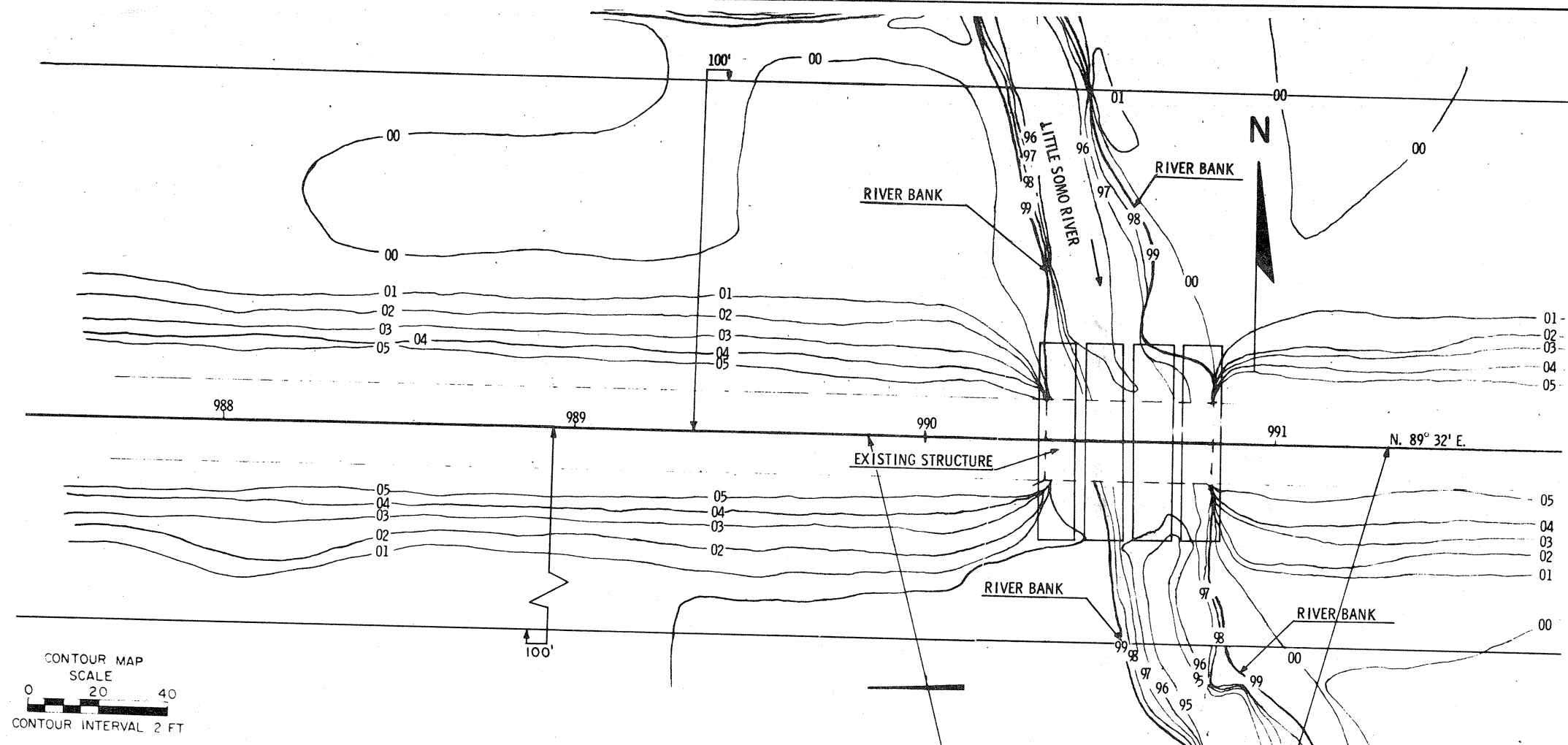


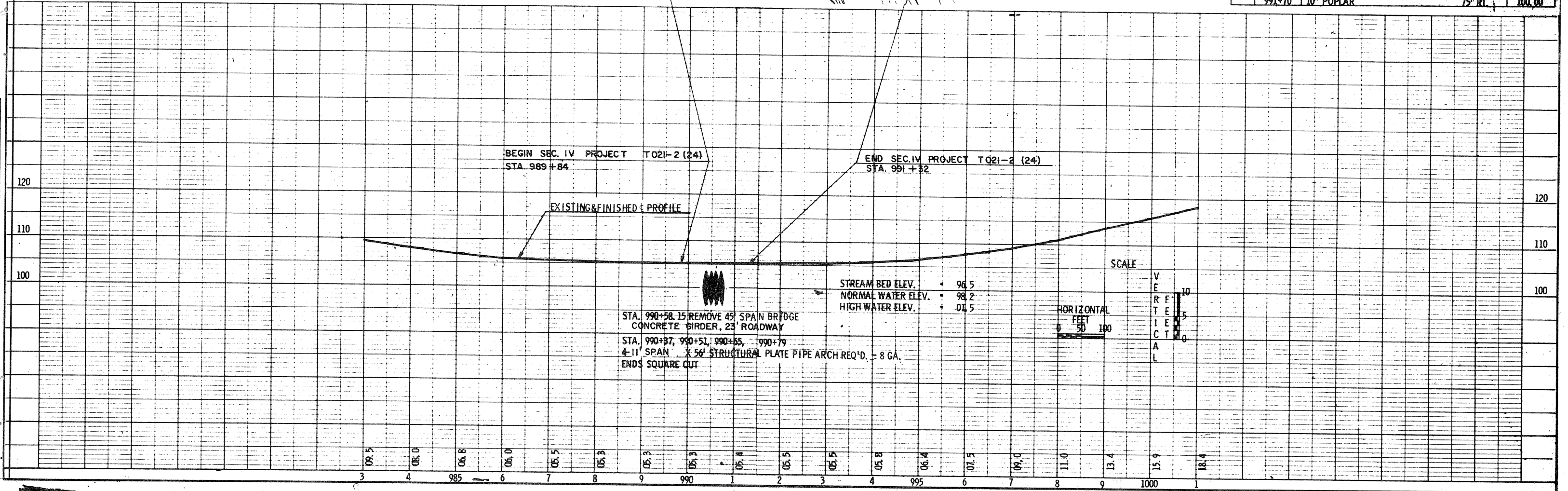
1580-2-70



STA. 990+37 STA. 990+51 STA. 990+65 STA. 990+79
 4-11' SPAN X 56' STRUCTURAL PLATE PIPE ARCHES REQ'D.
 END ELEVATION
 DETAIL OF RIPRAP

CONTOUR MAP
 SCALE
 0 20 40
 CONTOUR INTERVAL 2 FT

BENCH MARKS		
NO.	STATION	DESCRIPTION
	991+70	10' POPLAR
		75' RT
		ELEV. 100.00



BEGIN SEC. IV PROJECT T021-2 (24)
 STA. 989+84

END SEC. IV PROJECT T021-2 (24)
 STA. 991+32

EXISTING & FINISHED PROFILE

STA. 990+58.15 REMOVE 45' SPAN BRIDGE
 CONCRETE GIRDER, 23' ROADWAY
 STA. 990+37, 990+51, 990+65, 990+79
 4-11' SPAN X 56' STRUCTURAL PLATE PIPE ARCH REQ'D. - 8 GA.
 ENDS SQUARE CUT

STREAM BED ELEV. + 96.5
 NORMAL WATER ELEV. + 98.2
 HIGH WATER ELEV. + 01.5

SCALE
 HORIZONTAL FEET
 0 50 100
 VERTICAL FEET
 0 5 10