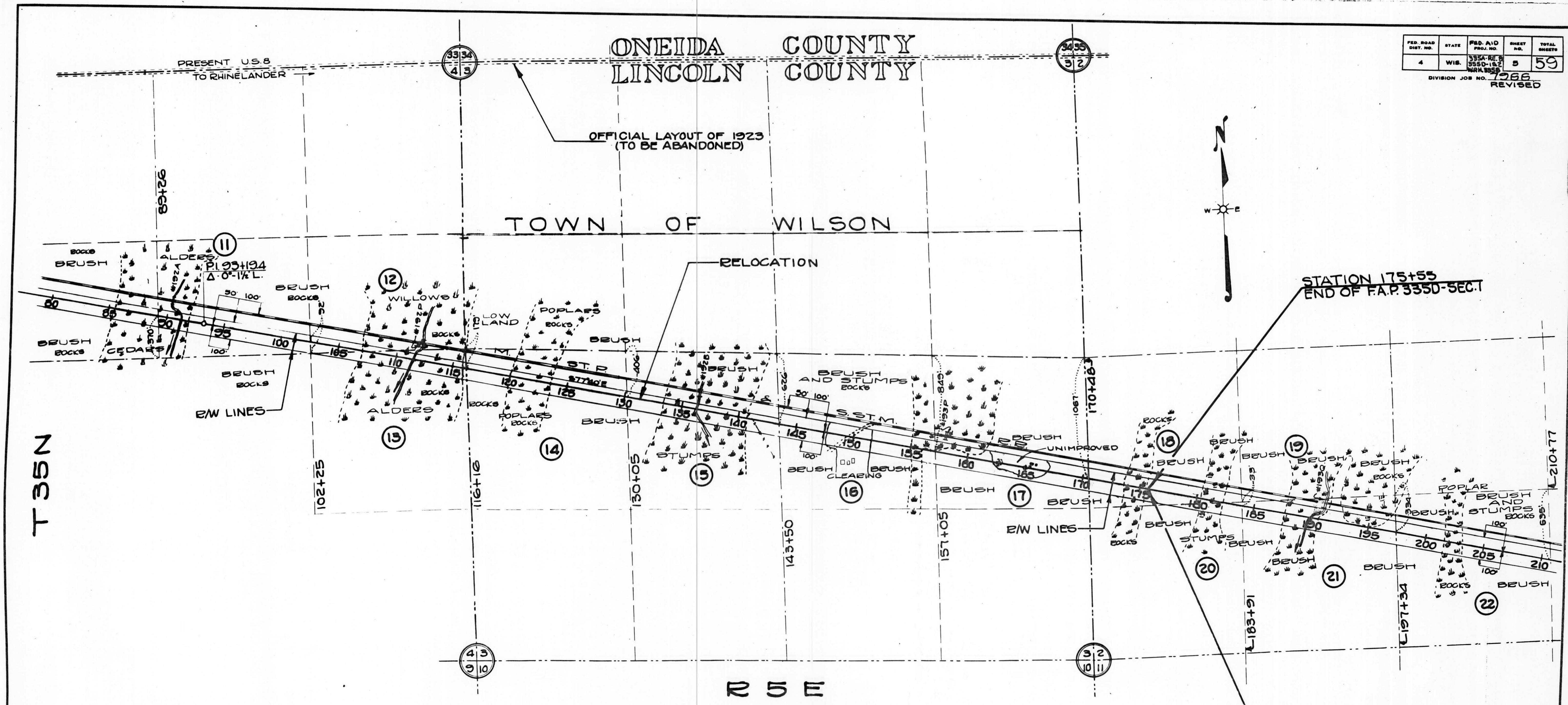


FED. ROAD DIST. NO.	STATE	FED. AID PROJ. NO.	SHEET NO.	TOTAL SHEETS
4	WIS.	335A-RE 3350-1&2 W.R.H. 335B	5	59
DIVISION JOB NO. 7966			REVISED	



REVISED 4-2-45
REVISED 1-20-37

PLAT OF RIGHT OF WAY REQUIRED
DIVISION JOB NO. 7966
RECORD - HEAFFORD JCT. ROAD
U.S.H.NO. 8 LINCOLN COUNTY
SCALE 1" = 500'