

REVISION DATE	PROJECT I.D.	SHEET NUMBER	TOTAL SHEETS
1-27-72	1173-2-21	4.14	
9-25-72	FEDERAL PROJECT DESIGNATION		
3-12-73			
7-24-73 NC	Plat of Right of Way Required		
12-9-77 NC	South County Line - Merrill		
6-9-87 NC	Lincoln U.S.H. 51 County		
	SCALE	0	100 200 Ft.
	DATE	MARCH 8, 1971	

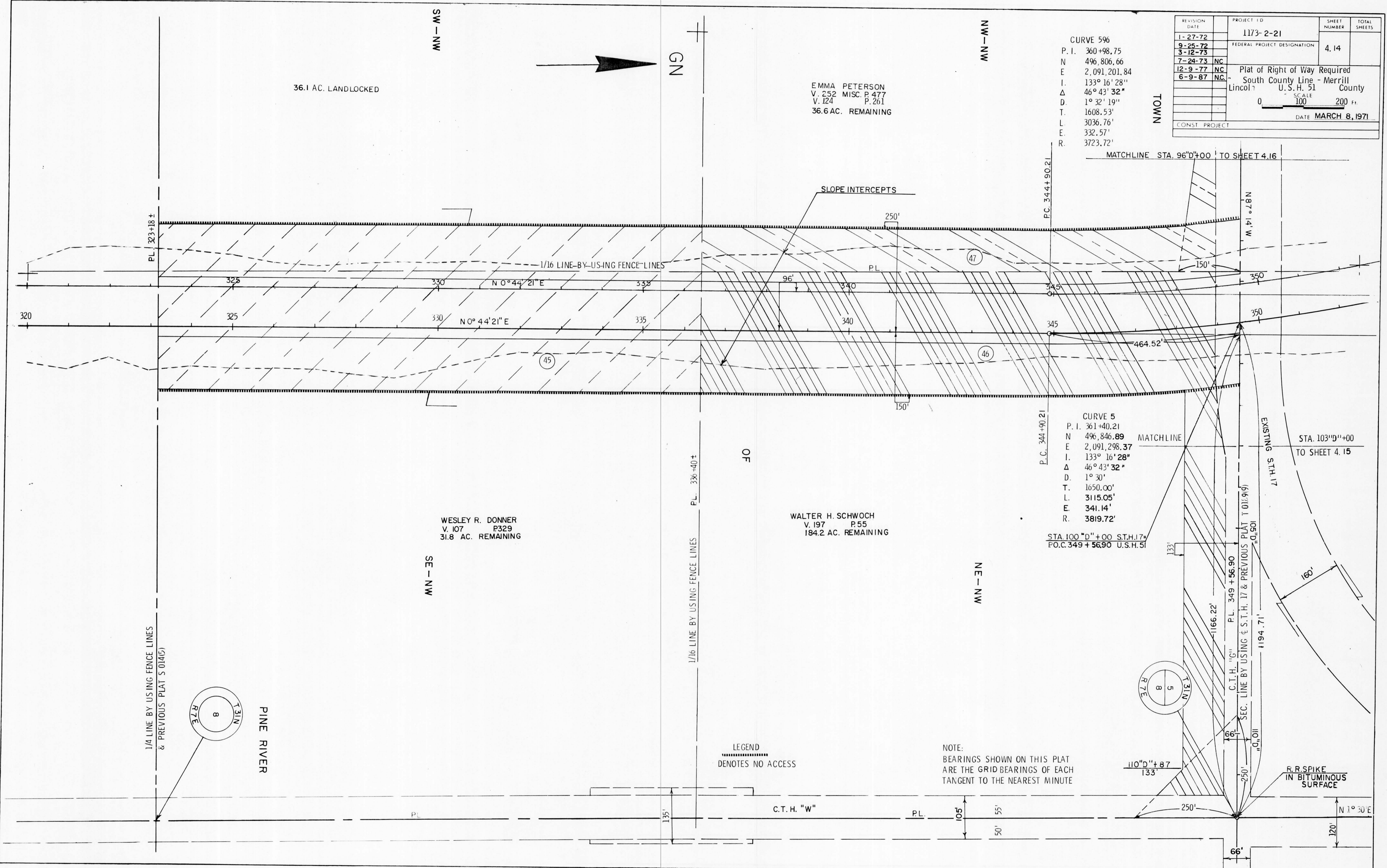
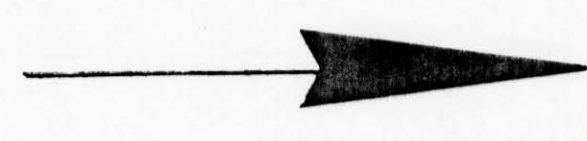
CURVE 596
P.I. 360+98.75
N 496,806.66
E 2,091,201.84
I. 133° 16' 28"
Δ 46° 43' 32"
D. 1° 32' 19"
T. 1608.53'
L. 3036.76'
E. 332.57'
R. 3723.72'

CURVE 5
P.I. 361+40.21
N 496,846.89
E 2,091,298.37
I. 133° 16' 28"
Δ 46° 43' 32"
D. 1° 30'
T. 1650.00'
L. 3115.05'
E. 341.14'
R. 3819.72'

EMMA PETERSON
V. 252 MISC. P. 477
V. 124 P. 261
36.6 AC. REMAINING

WESLEY R. DONNER
V. 107 P. 329
31.8 AC. REMAINING

WALTER H. SCHWOCH
V. 197 P. 55
184.2 AC. REMAINING



NOTE:
BEARINGS SHOWN ON THIS PLAT
ARE THE GRID BEARINGS OF EACH
TANGENT TO THE NEAREST MINUTE