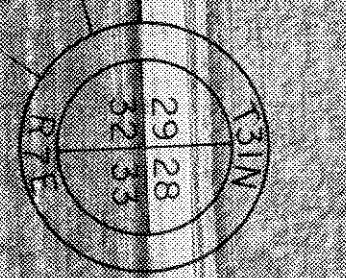
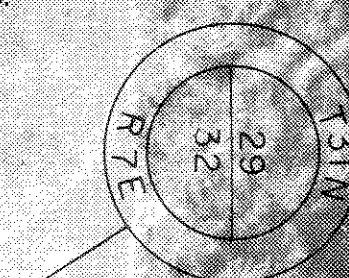
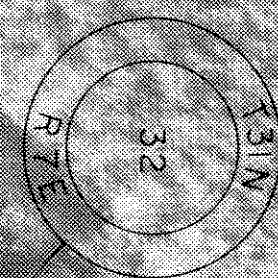
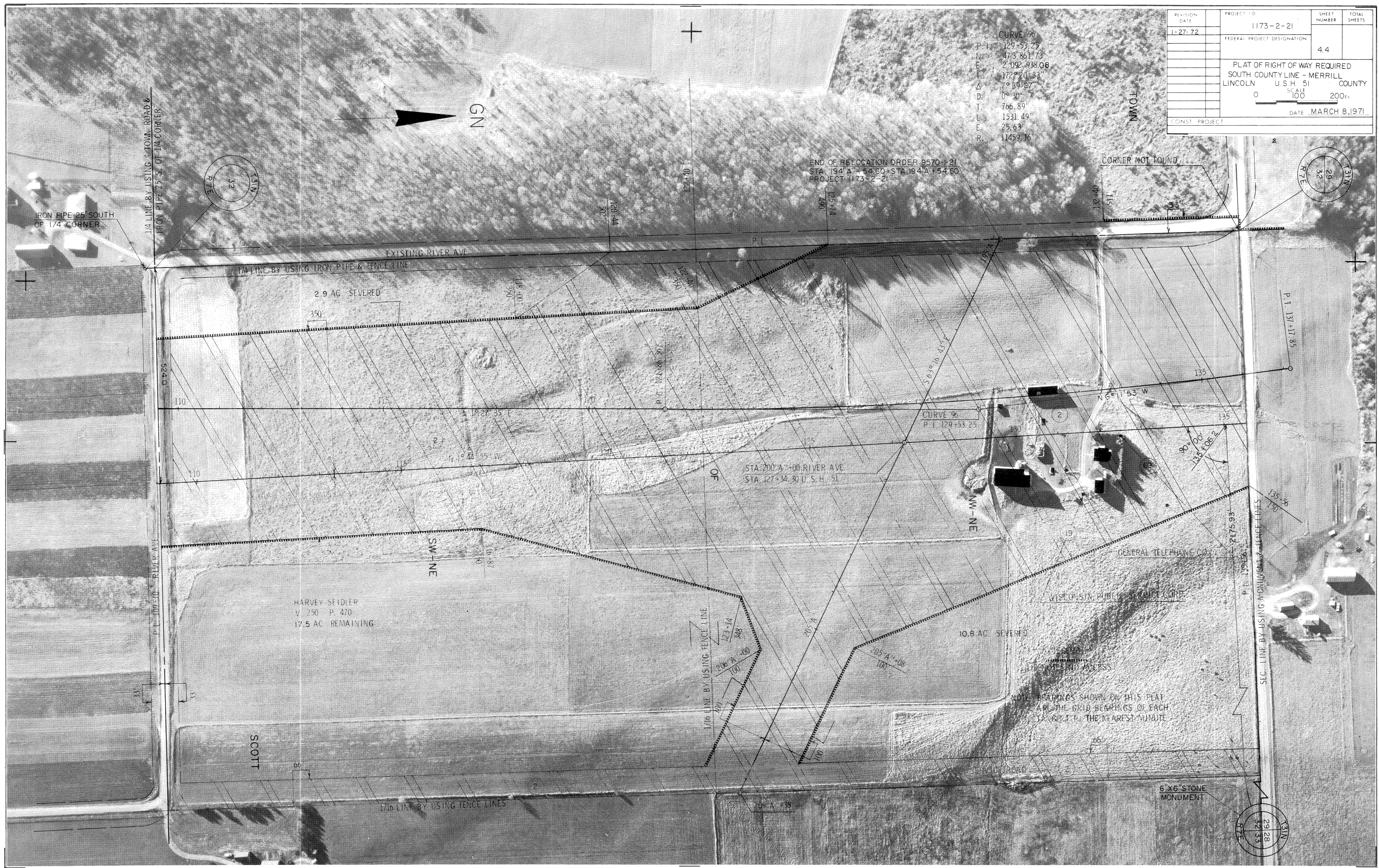


REVISION DATE	PROJECT ID	SHEET NUMBER	TOTAL SHEETS
1-27-72	1173-2-21	4.4	
FEDERAL PROJECT DESIGNATION			
PLAT OF RIGHT OF WAY REQUIRED			
SOUTH COUNTY LINE - MERRILL			
LINCOLN	U.S.H. 51	MERRILL COUNTY	
SCALE		200'	
0		100	
DATE MARCH 8, 1971			
CONST. PROJECT			

CURVE 96  
P.I. 129+53.25  
M 473.861.73  
E 2,092.938.08  
L 172°20'33"  
Δ 7°39'27"  
D 0°30'  
T 766.89'  
L 1531.49'  
E 25.63'  
R 11459.16'

END OF RELOCATION ORDER 9570-1-21  
STA 194+00 +54.60 - STA 194+00 +54.60  
PROJECT 1173-2-21

CORNER NOT FOUND



1/4 LINE BY USING TOWN ROAD & IRON PIPE 25' S. OF 1/4 CORNER

1/4 LINE BY USING IRON PIPE & FENCE LINE

2.9 AC. SEVERED

HARVEY SEIDLER  
V. 250 P. 470  
17.5 AC. REMAINING

SCOTT

10.8 AC. SEVERED

NOTE BEARINGS SHOWN ON THIS PLAT ARE THE GRID BEARINGS OF EACH LINE WITH THE NEAREST MINUTE

6'X6' STONE MONUMENT

1/16 LINE BY USING FENCE LINE

1/16 LINE BY USING FENCE LINES

SEC. LINE BY USING MONUMENT & FENCE LINES

STA 200+00 RIVER AVE  
STA 127+34.30 U.S.H. 51

CURVE 96  
P.I. 129+53.25

GN

TOWN

NW-NE

SW-NE

OF

P.T. 131+17.85

P.T. 129+56.2

P.T. 129+56.2

P.L. 100+10 RIVER AVE

101+22

125+14

132+31

120+44

118+00

121+86

135

135

135+36

127+93

110

110

110+87

205+08

135

65

109+38

33

33

60

60

123+14

210+00

100

205+08

100

100

100

100

100