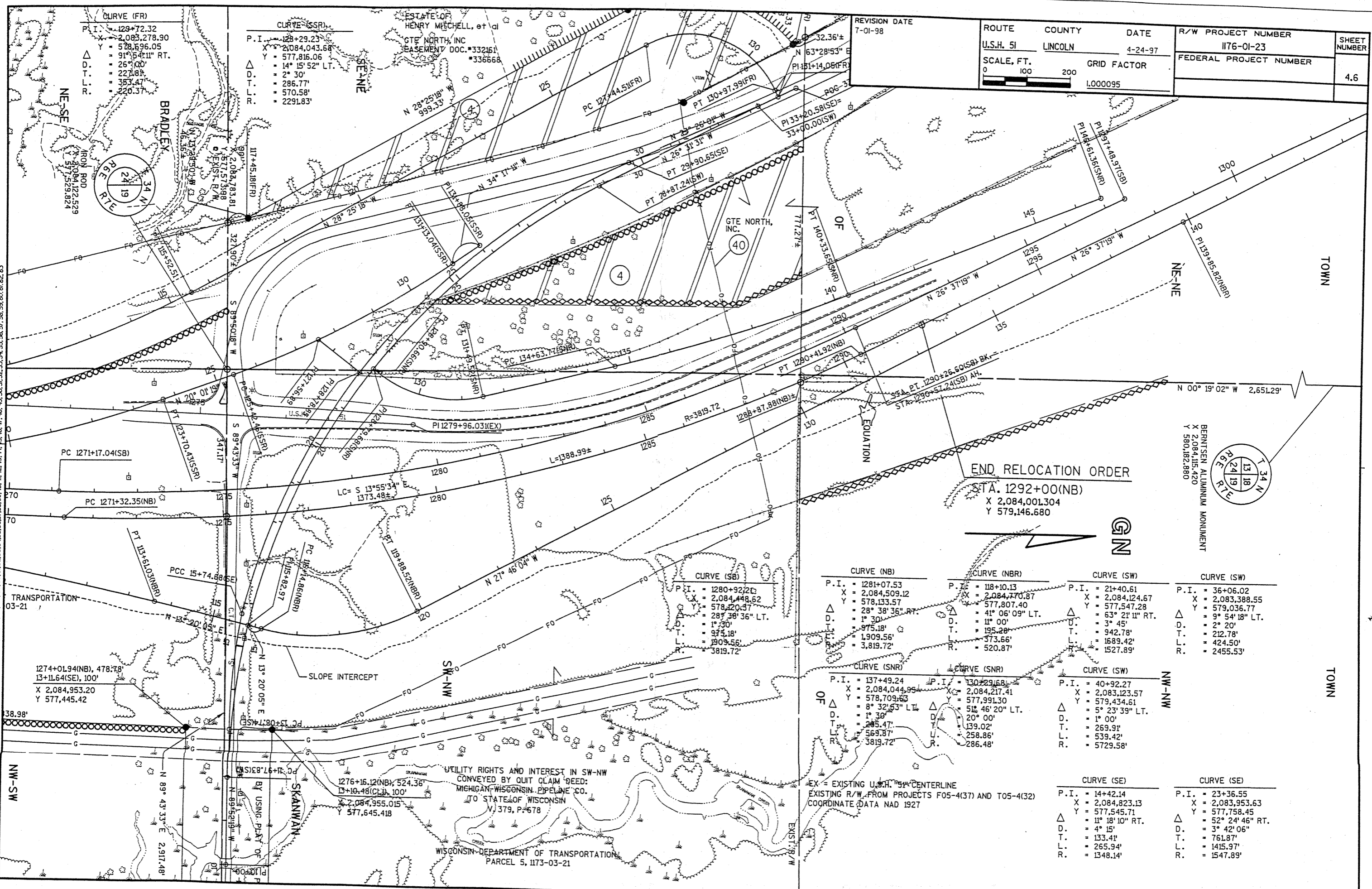


FILE NAME: D7 1176021176RWS00N
 LEVELS ON: 1, 2, 3, 4, 5, 6, 7, 8, 9, 10, 11, 12, 13, 14, 15, 16, 17, 18, 19, 20, 21, 22, 23, 24, 25, 26, 27, 28, 29, 30, 31, 32, 33, 34, 35, 36, 37, 38, 39, 40, 41, 42, 43, 44, 45, 46, 47, 48, 49, 50, 51, 52, 53, 54, 55, 56, 57, 58, 59, 60, 61, 62, 63
 ORIGINATOR: DISTRICT 7 RHINELANDER
 REV. DATE: 04-21-97 PLOT SCALE: 201:208459:1:000000
 PLOT DATE: 01-JUL-1998 06:11

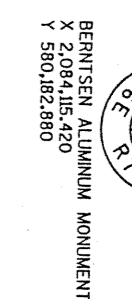
REVISION DATE 7-01-98	ROUTE U.S.H. 51	COUNTY LINCOLN	DATE 4-24-97	R/W PROJECT NUMBER 1176-01-23	SHEET NUMBER 4.6
SCALE, FT. 0 100 200			GRID FACTOR 1.000095	FEDERAL PROJECT NUMBER	



CURVE (FR)	CURVE (SSR)
P.I. = 129+72.32 X = 2,083,278.90 Y = 578,696.05 91° 54' 11" RT. D. = 26° 00' T. = 227.81' L. = 353.47' R. = 220.37'	P.I. = 128+29.23 X = 2,084,043.68 Y = 577,816.06 14° 15' 52" LT. D. = 2° 30' T. = 286.77' L. = 570.58' R. = 2291.83'

CURVE (NB)	CURVE (NBR)	CURVE (SW)	CURVE (SW)
P.I. = 1280+92.21 X = 2,084,448.62 Y = 578,120.37 28° 38' 36" RT. D. = 1° 30' T. = 975.18' L. = 1,909.56' R. = 3,819.72'	P.I. = 118+10.13 X = 2,084,770.87 Y = 577,807.40 41° 06' 09" LT. D. = 3° 45' T. = 195.28' L. = 373.66' R. = 520.87'	P.I. = 21+40.61 X = 2,084,124.67 Y = 577,547.28 63° 21' 11" RT. D. = 3° 45' T. = 942.78' L. = 1,689.42' R. = 1,527.89'	P.I. = 36+06.02 X = 2,083,388.55 Y = 579,036.77 9° 54' 18" LT. D. = 2° 20' T. = 212.78' L. = 424.50' R. = 2,455.53'
CURVE (SNR)	CURVE (SNR)	CURVE (SW)	CURVE (SE)
P.I. = 137+49.24 X = 2,084,044.95 Y = 578,709.63 8° 32' 53" LT. D. = 1° 30' T. = 285.47' L. = 569.37' R. = 3,819.72'	P.I. = 130+29.68 X = 2,084,217.41 Y = 577,991.30 51° 46' 20" LT. D. = 20° 00' T. = 139.02' L. = 258.86' R. = 286.48'	P.I. = 40+92.27 X = 2,083,123.57 Y = 579,434.61 5° 23' 39" LT. D. = 1° 00' T. = 269.91' L. = 539.42' R. = 5729.58'	P.I. = 14+42.14 X = 2,084,823.13 Y = 577,545.71 11° 18' 10" RT. D. = 4° 15' T. = 133.41' L. = 265.94' R. = 1,348.14'
			CURVE (SE)
			P.I. = 23+36.55 X = 2,083,953.63 Y = 577,758.45 52° 24' 46" RT. D. = 3° 42' 06" T. = 761.87' L. = 1,415.97' R. = 1,547.89'

END RELOCATION ORDER
 STA. 1292+00(NB)
 X 2,084,001.304
 Y 579,146.680



UTILITY RIGHTS AND INTEREST IN SW-NW
 CONVEYED BY QUIT CLAIM DEED:
 MICHIGAN-WISCONSIN PIPELINE CO.
 TO STATE OF WISCONSIN
 V. 379, P. 678

WISCONSIN DEPARTMENT OF TRANSPORTATION
 PARCEL 5, 1173-03-21