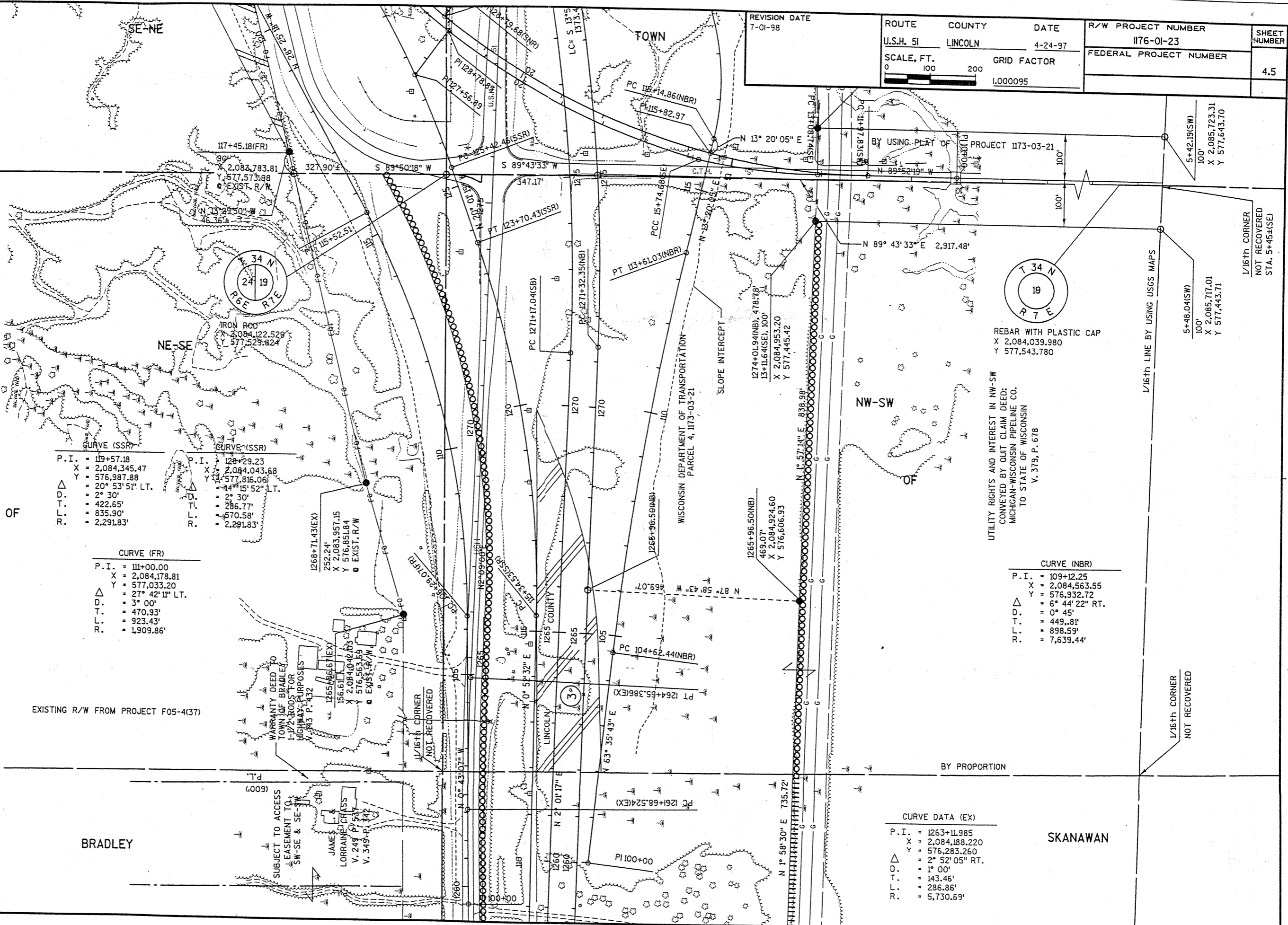


REVISION DATE 7-01-98	ROUTE U.S.H. 51	COUNTY LINCOLN	DATE 4-24-97	R/W PROJECT NUMBER 1176-01-23	SHEET NUMBER 4.5
	SCALE, FT. 0 100 200		GRID FACTOR 1.000095	FEDERAL PROJECT NUMBER	

GN



CURVE (SSR)

P. I.	= 119+57.18
X	= 2,084,345.47
Y	= 576,987.88
Δ	= 20° 53' 51" LT.
D. T.	= 2° 30'
T. T.	= 422.65'
L. R.	= 835.90'
R. R.	= 2,291.83'

CURVE (SSR)

P. I.	= 128+29.23
X	= 2,084,043.68
Y	= 577,816.06
Δ	= 44° 15' 52" LT.
D. T.	= 2° 30'
T. T.	= 286.77'
L. R.	= 570.58'
R. R.	= 2,291.83'

CURVE (FR)

P. I.	= 111+00.00
X	= 2,084,178.81
Y	= 577,033.20
Δ	= 27° 42' 11" LT.
D. T.	= 3° 00'
T. T.	= 470.93'
L. R.	= 923.43'
R. R.	= 1,909.86'

CURVE (NBR)

P. I.	= 109+12.25
X	= 2,084,563.55
Y	= 576,932.72
Δ	= 6° 44' 22" RT.
D. T.	= 0° 45'
T. T.	= 449.81'
L. R.	= 898.59'
R. R.	= 7,639.44'

CURVE DATA (EX)

P. I.	= 1263+11.985
X	= 2,084,188.220
Y	= 576,283.260
Δ	= 2° 52' 05" RT.
D. T.	= 1° 00'
T. T.	= 143.46'
L. R.	= 286.86'
R. R.	= 5,730.69'

REBAR WITH PLASTIC CAP
 X 2,084,039.980
 Y 577,543.780

UTILITY RIGHTS AND INTEREST IN NW-SW
 CONVEYED BY QUIT CLAIM DEED:
 MICHIGAN-WISCONSIN PIPELINE CO.
 TO STATE OF WISCONSIN
 V. 379, P. 678

EXISTING R/W FROM PROJECT F05-4(37)

BRADLEY

SKANAWAN

1/16th LINE BY USING USGS MAPS

1/16th CORNER NOT RECOVERED

5+48.04(SW)
 100'
 X 2,085,717.01
 Y 577,443.71

5+42.19(SW)
 100'
 X 2,085,723.31
 Y 577,643.70