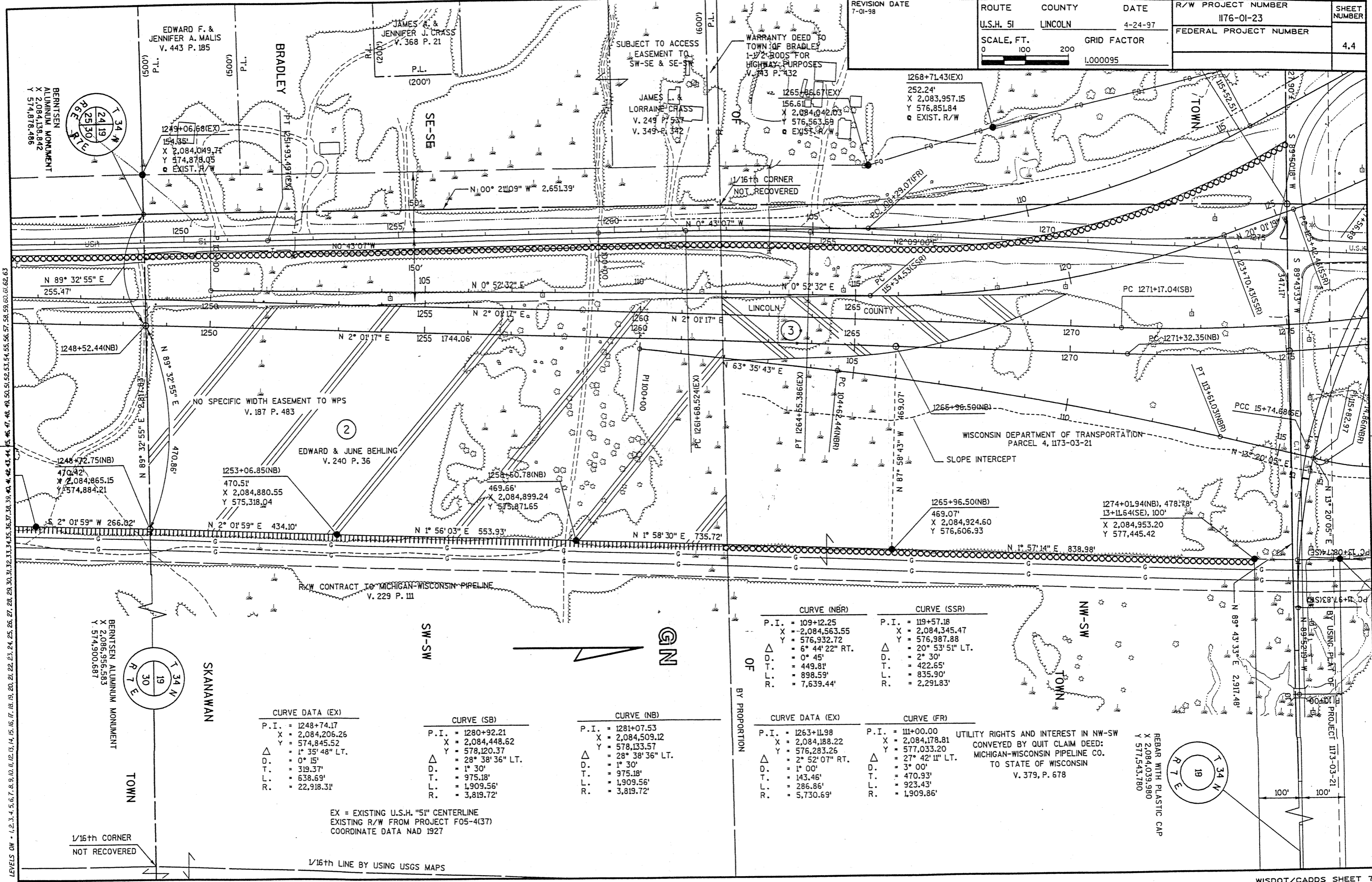


FILE NAME: D:\17602\176RW3.DGN  
 LEVELS ON - 1, 2, 3, 4, 5, 6, 7, 8, 9, 10, 11, 12, 13, 14, 15, 16, 17, 18, 19, 20, 21, 22, 23, 24, 25, 26, 27, 28, 29, 30, 31, 32, 33, 34, 35, 36, 37, 38, 39, 40, 41, 42, 43, 44, 45, 46, 47, 48, 49, 50, 51, 52, 53, 54, 55, 56, 57, 58, 59, 60, 61, 62, 63  
 ORIGINATOR: DISTRICT 7 RHINELANDER  
 REV. DATE: 04-21-97 PLOT SCALE: 201.20845911.000000  
 PLOT DATE: 01-JUL-1998 06:59

REVISION DATE 7-01-98	ROUTE U.S.H. 51	COUNTY LINCOLN	DATE 4-24-97	R/W PROJECT NUMBER 1176-01-23	SHEET NUMBER 4.4
	SCALE, FT. 0 100 200		GRID FACTOR 1.000095	FEDERAL PROJECT NUMBER	



CURVE DATA (EX)

P.I.	= 1248+74.17
X	= 2,084,206.26
Y	= 574,845.52
Δ	= 1° 35' 48" LT.
D.	= 0° 15'
T.	= 319.37'
L.	= 638.69'
R.	= 22,918.31'

CURVE (SB)

P.I.	= 1280+92.21
X	= 2,084,448.62
Y	= 578,120.37
Δ	= 28° 38' 36" LT.
D.	= 1° 30'
T.	= 975.18'
L.	= 1,909.56'
R.	= 3,819.72'

CURVE (NB)

P.I.	= 1281+07.53
X	= 2,084,509.12
Y	= 578,133.57
Δ	= 28° 38' 36" LT.
D.	= 1° 30'
T.	= 975.18'
L.	= 1,909.56'
R.	= 3,819.72'

CURVE (NBR)

P.I.	= 109+12.25
X	= 2,084,563.55
Y	= 576,932.72
Δ	= 6° 44' 22" RT.
D.	= 0° 45'
T.	= 449.81'
L.	= 898.59'
R.	= 7,639.44'

CURVE (SSR)

P.I.	= 119+57.18
X	= 2,084,345.47
Y	= 576,987.88
Δ	= 20° 53' 51" LT.
D.	= 2° 30'
T.	= 422.65'
L.	= 835.90'
R.	= 2,291.83'

CURVE DATA (EX)

P.I.	= 1263+11.98
X	= 2,084,188.22
Y	= 576,283.26
Δ	= 52° 07" RT.
D.	= 1° 00'
T.	= 143.46'
L.	= 286.86'
R.	= 5,730.69'

CURVE (FR)

P.I.	= 111+00.00
X	= 2,084,178.81
Y	= 577,033.20
Δ	= 27° 42' 11" LT.
D.	= 3° 00'
T.	= 470.93'
L.	= 923.43'
R.	= 1,909.86'

UTILITY RIGHTS AND INTEREST IN NW-SW CONVEYED BY QUIT CLAIM DEED TO STATE OF WISCONSIN V. 379, P. 678

REBAR WITH PLASTIC CAP  
 X 2,084,039.980  
 Y 577,543.780

EX = EXISTING U.S.H. "51" CENTERLINE  
 EXISTING R/W FROM PROJECT F05-4(137)  
 COORDINATE DATA NAD 1927

1/16th LINE BY USING USGS MAPS