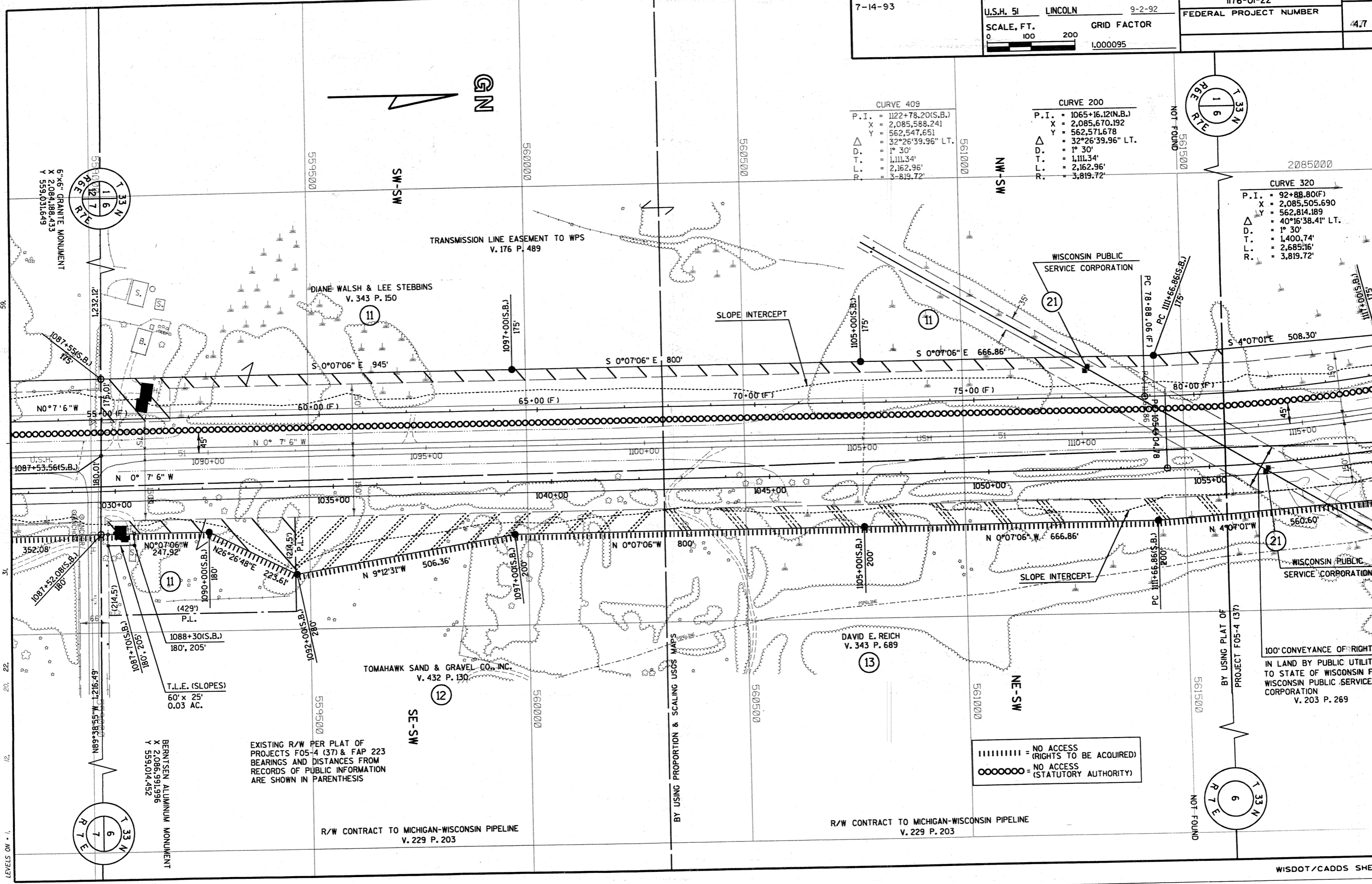


REVISION DATE 7-14-93	ROUTE U.S.H. 51	COUNTY LINCOLN	DATE 9-2-92	R/W PROJECT NUMBER 1176-01-22	SHEET NUMBER 47
	SCALE, FT. 0 100 200	GRID FACTOR 1.000095		FEDERAL PROJECT NUMBER	

CURVE 409	
P.I.	= 1122+78.20(S.B.)
X	= 2,085,588.241
Y	= 562,547.651
Δ	= 32°26'39.96" LT.
D.	= 1° 30'
T.	= 1,111.34'
L.	= 2,162.96'
R.	= 3,819.72'

CURVE 200	
P.I.	= 1065+16.12(N.B.)
X	= 2,085,670.192
Y	= 562,571.678
Δ	= 32°26'39.96" LT.
D.	= 1° 30'
T.	= 1,111.34'
L.	= 2,162.96'
R.	= 3,819.72'

CURVE 320	
P.I.	= 92+88.80(F)
X	= 2,085,505.690
Y	= 562,814.189
Δ	= 40°16'38.41" LT.
D.	= 1° 30'
T.	= 1,400.74'
L.	= 2,685.16'
R.	= 3,819.72'



||||| = NO ACCESS
 (RIGHTS TO BE ACQUIRED)
 ○○○○○○ = NO ACCESS
 (STATUTORY AUTHORITY)

EXISTING R/W PER PLAT OF
 PROJECTS F05-4 (37) & FAP 223
 BEARINGS AND DISTANCES FROM
 RECORDS OF PUBLIC INFORMATION
 ARE SHOWN IN PARENTHESIS

R/W CONTRACT TO MICHIGAN-WISCONSIN PIPELINE
 V. 229 P. 203

R/W CONTRACT TO MICHIGAN-WISCONSIN PIPELINE
 V. 229 P. 203

BY USING PLAT OF
 PROJECT F05-4 (37)

100' CONVEYANCE OF RIGHT
 IN LAND BY PUBLIC UTILITY
 TO STATE OF WISCONSIN FROM
 WISCONSIN PUBLIC SERVICE
 CORPORATION
 V. 203 P. 269