

REVISION DATE
7-14-93

ROUTE COUNTY
U.S.H. 51 LINCOLN

DATE
9-2-92

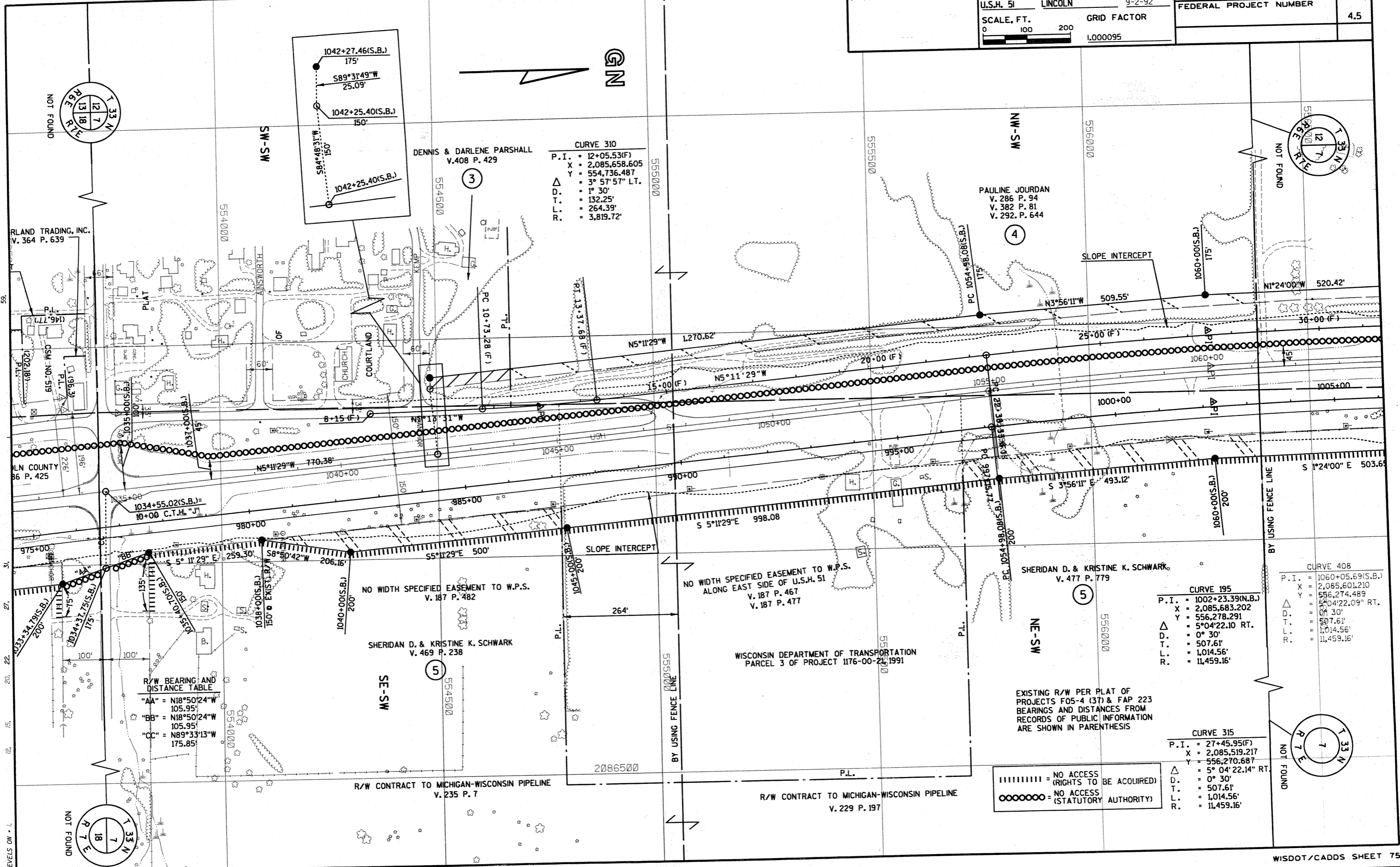
R/W PROJECT NUMBER
1176-01-22

SHEET NUMBER
4.5

SCALE, FT.
0 100 200

GRID FACTOR
1.000095

FEDERAL PROJECT NUMBER



CURVE 310
 P.I. = 12+05.53(F)
 X = 2,085,658.605
 Y = 554,736.487
 Δ = 3° 57' 57" LT.
 D. = 1° 30'
 T. = 132.25'
 L. = 264.39'
 R. = 3,819.72'

CURVE 195
 P.I. = 1002+23.39(N.B.)
 X = 2,085,683.202
 Y = 556,278.291
 Δ = 5° 04' 22.10 RT.
 D. = 0° 30'
 T. = 507.61'
 L. = 1,014.56'
 R. = 11,459.16'

CURVE 408
 P.I. = 1060+05.69(S.B.)
 X = 2,085,601.210
 Y = 556,274.489
 Δ = 3° 04' 22.09 RT.
 D. = 0° 30'
 T. = 507.61'
 L. = 1,014.56'
 R. = 11,459.16'

CURVE 315
 P.I. = 27+45.95(F)
 X = 2,085,519.217
 Y = 556,270.687
 Δ = 5° 04' 22.14 RT.
 D. = 0° 30'
 T. = 507.61'
 L. = 1,014.56'
 R. = 11,459.16'

R/W BEARING AND DISTANCE TABLE
 "AA" = N18°50'24"W
 105.95'
 "BB" = N18°50'24"W
 105.95'
 "CC" = N89°33'13"W
 175.85'

||||||| = NO ACCESS (RIGHTS TO BE ACQUIRED)
 ○○○○○○ = NO ACCESS (STATUTORY AUTHORITY)

R/W CONTRACT TO MICHIGAN-WISCONSIN PIPELINE
 V. 235 P. 7

R/W CONTRACT TO MICHIGAN-WISCONSIN PIPELINE
 V. 229 P. 197

