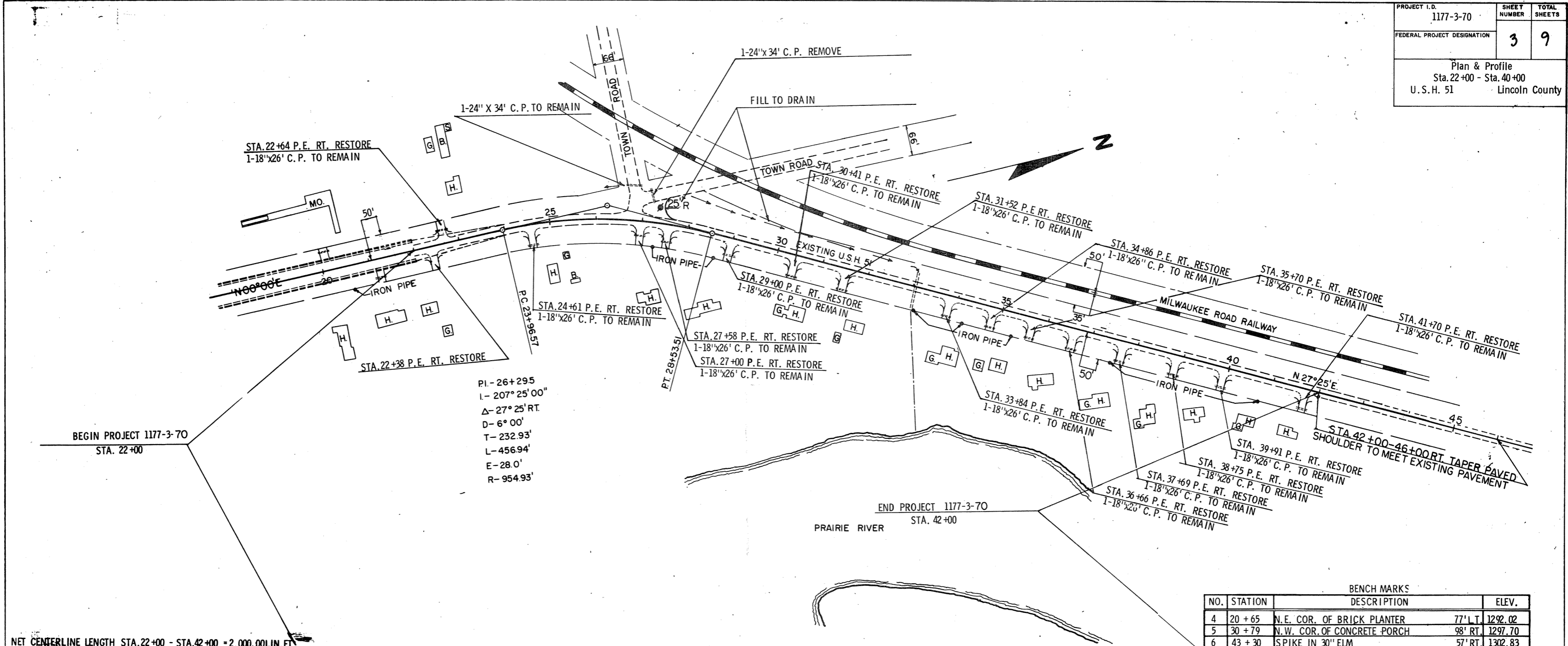


| | | | |
|---|-----------|--------------|--------------|
| PROJECT I.D. | 1177-3-70 | SHEET NUMBER | TOTAL SHEETS |
| FEDERAL PROJECT DESIGNATION | | 3 | 9 |
| Plan & Profile Sta. 22+00 - Sta. 40+00 U.S.H. 51 Lincoln County | | | |



BEGIN PROJECT 1177-3-70
STA. 22+00

END PROJECT 1177-3-70
STA. 42+00

PI-26+295
L-207°25'00"
Δ-27°25'RT
D-6°00'
T-232.93'
L-456.94'
E-28.0'
R-954.93'

NET CENTERLINE LENGTH STA. 22+00 - STA. 42+00 = 2,000.00 LIN. FT.

BENCH MARKS

| NO. | STATION | DESCRIPTION | ELEV. |
|-----|---------|-----------------------------|------------------|
| 4 | 20+65 | N.E. COR. OF BRICK PLANTER | 77' L.T. 1292.02 |
| 5 | 30+79 | N.W. COR. OF CONCRETE PORCH | 98' RT. 1297.70 |
| 6 | 43+30 | SPIKE IN 30" ELM | 57' RT. 1302.83 |

