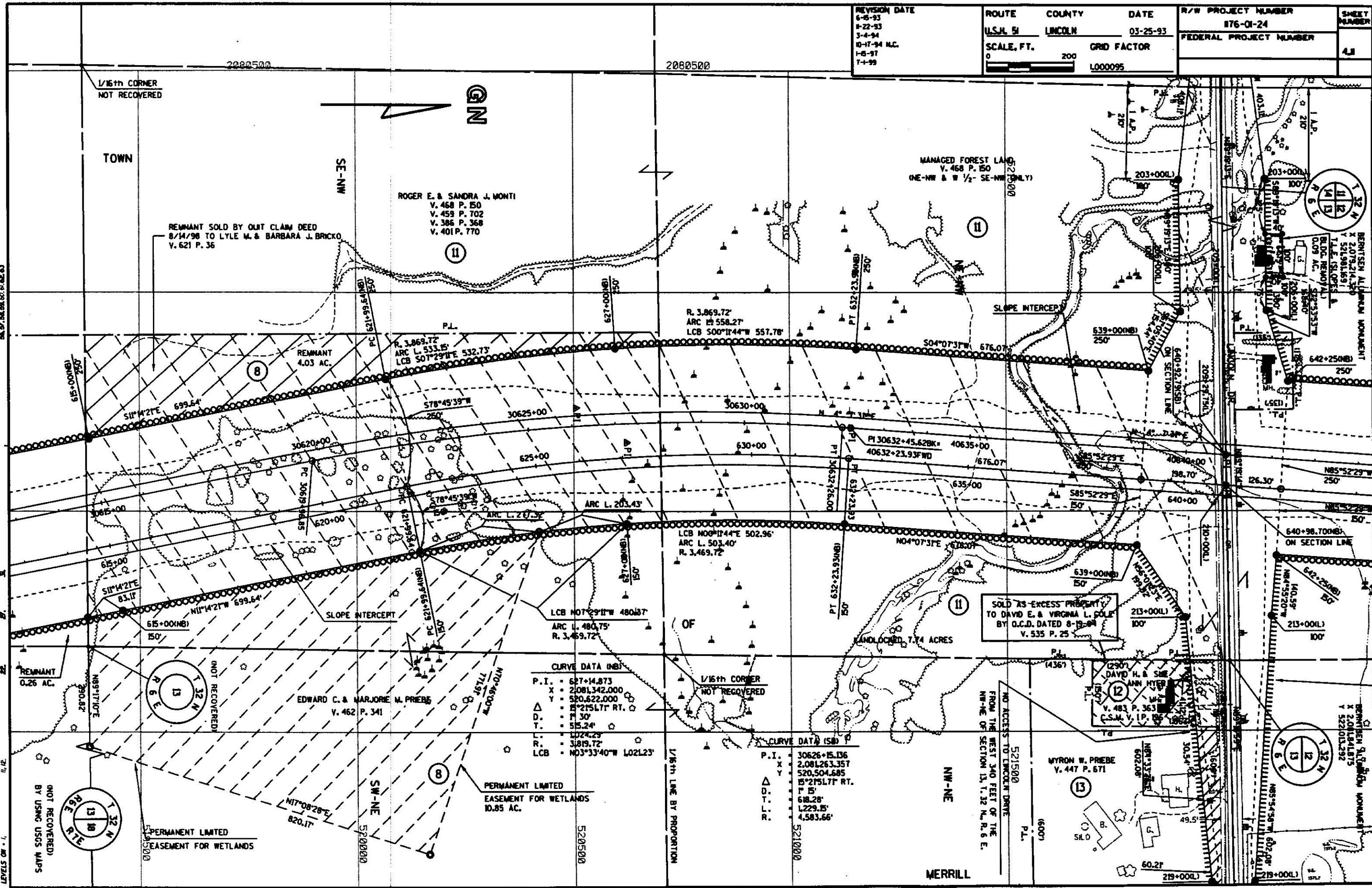


| | | | | | |
|---|---------------------|------------------------|------------------|---------------------------------|--------------------|
| REVISION DATE 6-8-93 9-22-93 3-4-94 10-17-94 N.C. 1-8-97 1-4-99 | ROUTE U.S. 51 | COUNTY LINCOLN | DATE 03-25-93 | R/W PROJECT NUMBER 176-01-24 | SHEET NUMBER 41 |
| | SCALE, FT. 0 200 | GRID FACTOR L000095 | | FEDERAL PROJECT NUMBER | |



ROGER E. & SANDRA J. MONTI
V. 468 P. 150
V. 459 P. 702
V. 386 P. 368
V. 401 P. 770

REMNANT SOLD BY QUIT CLAIM DEED
8/14/98 TO LYLE M. & BARBARA J. BRICKO
V. 621 P. 36

MANAGED FOREST LAND
V. 468 P. 150
(NE-NW & W 1/2- SE-NW ONLY)

SOLD AS EXCESS PROPERTY
TO DAVID E. & VIRGINIA L. COLE
BY O.C.D. DATED 8-19-94
V. 535 P. 25

EDWARD C. & MARJORIE M. PRIEBE
V. 462 P. 341

MYRON W. PRIEBE
V. 447 P. 671

CURVE DATA (NB)

| | |
|------|----------------------|
| P.I. | 627+14.873 |
| X | 2,081,342.000 |
| Y | 520,622.000 |
| Δ | 15°21'51.77" RT. |
| D. | 7' 30" |
| T. | 515.24' |
| L. | 1024.23' |
| R. | 3,469.72' |
| LCB | N03°33'40"W L021.23' |

CURVE DATA (SB)

| | |
|--------|------------------|
| P.I. | 30626+15.136 |
| X | 2,081,263.357 |
| Y | 520,504.685 |
| Δ | 15°21'51.77" RT. |
| T. | 7' 15" |
| D. | 688.28' |
| R. | L229.15' |
| L.C.B. | 4,583.66' |

PERMANENT LIMITED
EASEMENT FOR WETLANDS
10.85 AC.

PERMANENT LIMITED
EASEMENT FOR WETLANDS