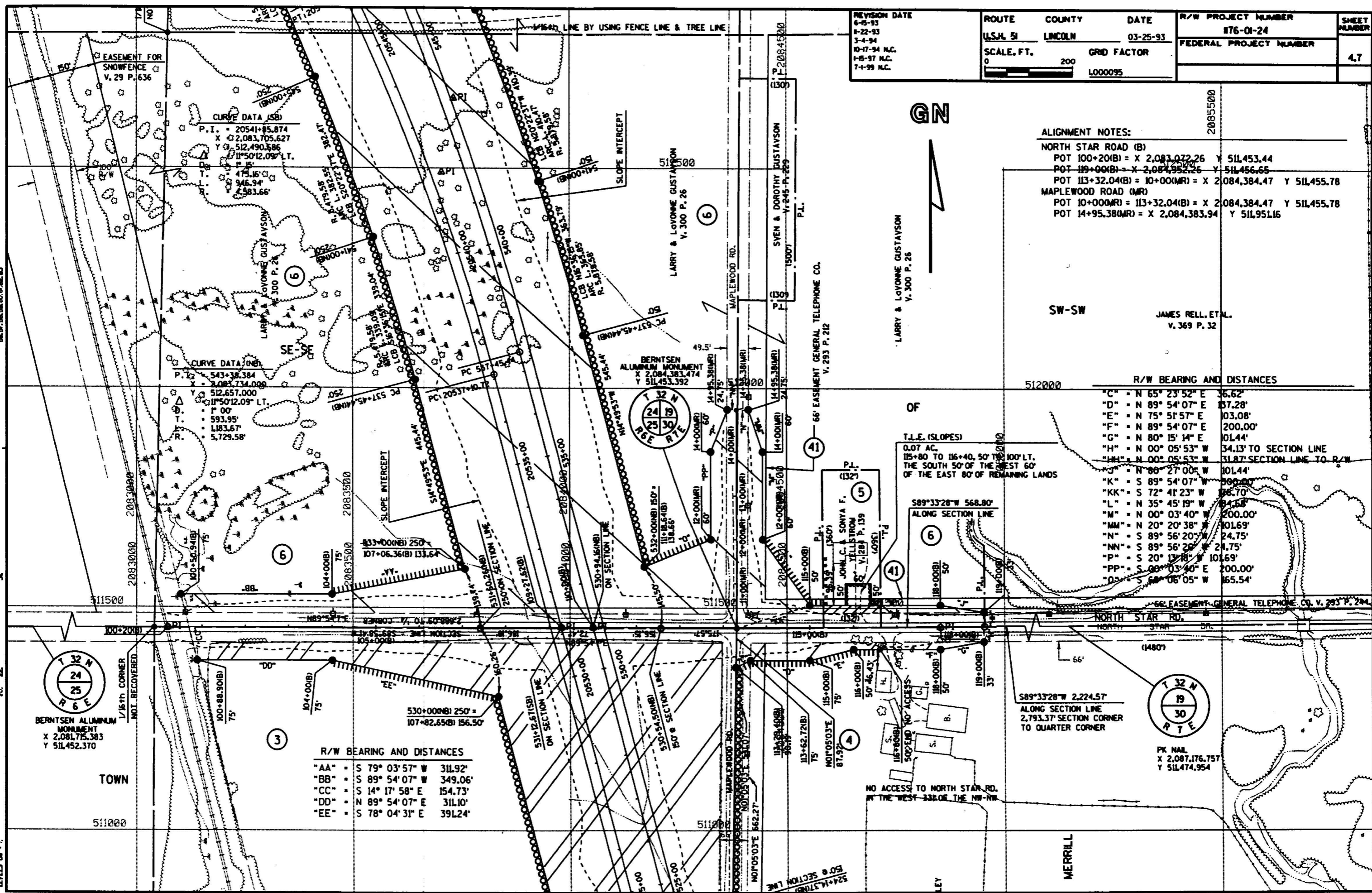


REVISION DATE 6-8-93 8-22-93 3-4-94 10-17-94 N.C. 1-5-97 N.C. 7-1-99 N.C.	ROUTE U.S.H. 51	COUNTY LINCOLN	DATE 03-25-93	R/W PROJECT NUMBER 876-01-24	SHEET NUMBER 4.7
	SCALE, FT. 0 200	GRID FACTOR L000095		FEDERAL PROJECT NUMBER	



ALIGNMENT NOTES:

NORTH STAR ROAD (B)	POT 100+20(B) = X 2,081,072.26 Y 511453.44
	POT 119+00(B) = X 2,084,952.26 Y 511456.65
	POT 113+32.04(B) = 10+00(MR) = X 2,084,384.47 Y 511455.78
MAPLEWOOD ROAD (MR)	POT 10+00(MR) = 113+32.04(B) = X 2,084,384.47 Y 511455.78
	POT 14+95.38(MR) = X 2,084,383.94 Y 511951.16

R/W BEARING AND DISTANCES

"C"	N 65° 23' 52" E	36.62'
"D"	N 89° 54' 07" E	137.28'
"E"	N 75° 51' 57" E	103.08'
"F"	N 89° 54' 07" E	200.00'
"G"	N 80° 15' 14" E	101.44'
"H"	N 00° 05' 53" W	34.13' TO SECTION LINE
"I"	N 00° 05' 53" W	31.87' SECTION LINE TO R/W
"J"	N 86° 27' 00" W	101.44'
"K"	S 89° 54' 07" W	300.00'
"KK"	S 72° 41' 23" W	26.70'
"L"	N 35° 45' 19" W	24.58'
"M"	N 00° 03' 40" W	200.00'
"MM"	N 20° 20' 38" W	101.69'
"N"	S 89° 56' 20" W	24.75'
"NN"	S 89° 56' 20" W	24.75'
"P"	S 20° 13' 18" W	101.69'
"PP"	S 00° 03' 40" E	200.00'
"Q"	S 68° 08' 05" W	165.54'

R/W BEARING AND DISTANCES

"AA"	S 79° 03' 57" W	311.92'
"BB"	S 89° 54' 07" W	349.06'
"CC"	S 14° 17' 58" E	154.73'
"DD"	N 89° 54' 07" E	311.10'
"EE"	S 78° 04' 31" E	391.24'

