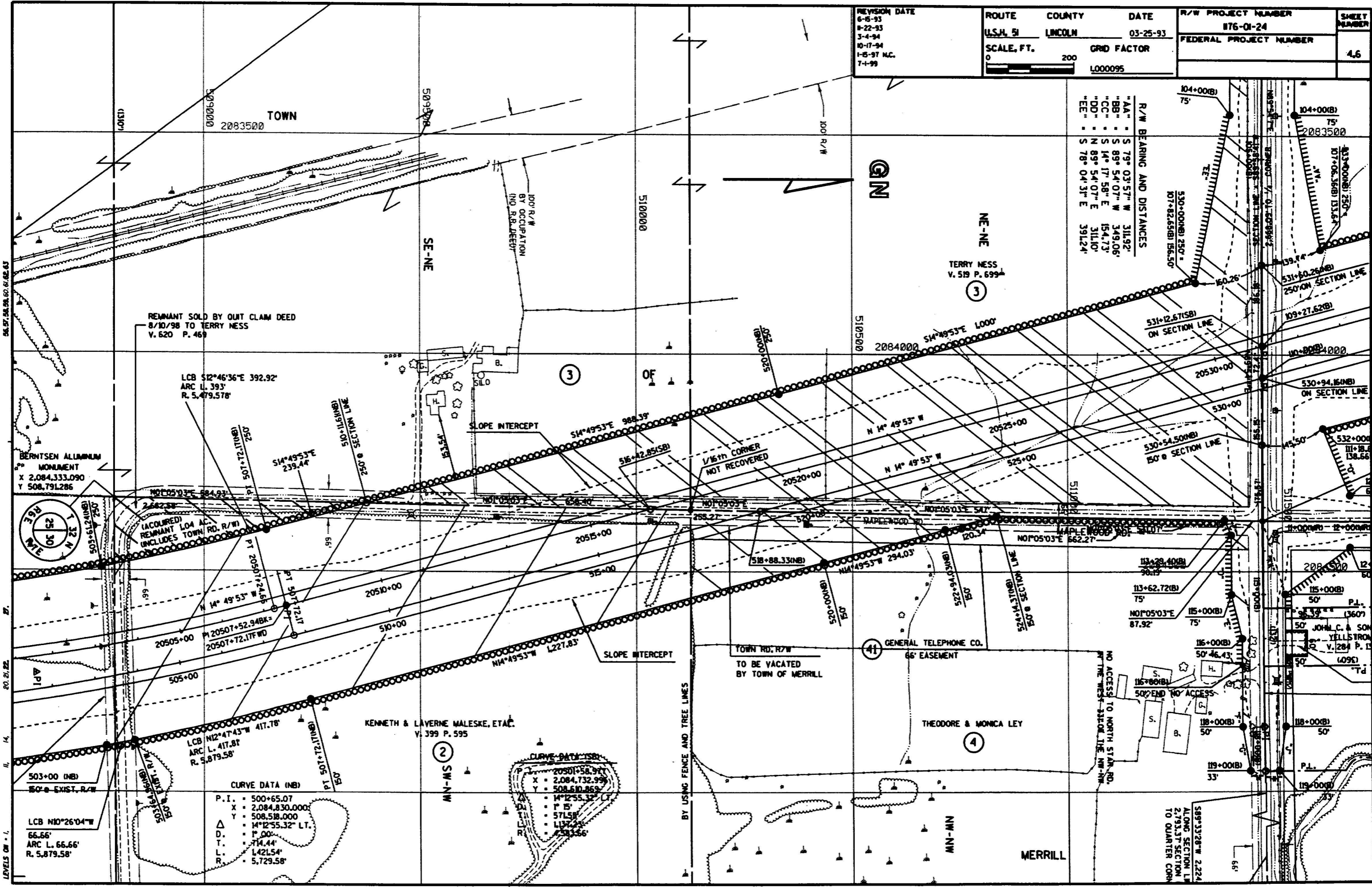


REVISION DATE 6-5-93 8-22-93 3-4-94 10-17-94 1-5-97 N.C. 7-1-99	ROUTE COUNTY U.S.H. 51 LINCOLN	DATE 03-25-93	R/W PROJECT NUMBER 876-01-24	SHEET NUMBER 4.6
SCALE, FT. 0 200	GRID FACTOR 1.000095	FEDERAL PROJECT NUMBER		



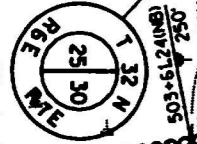
R/W BEARING AND DISTANCES

AA	S 79° 03' 57" W	311.92'
BB	S 89° 54' 07" W	349.06'
CC	S 14° 17' 58" E	154.73'
DD	N 89° 54' 07" E	311.10'
EE	S 78° 04' 31" E	391.24'

REMNANT SOLD BY OUI CLAIM DEED
8/10/98 TO TERRY NESS
V. 620 P. 469

LCB S12°46'36"E 392.92'
ARC L 393'
R. 5,479.578'

BERNTSEN ALUMINUM
MONUMENT
X 2,084,333.090
Y 508,791.286



(ACQUIRED)
REMNANT LOA AC.
INCLUDES TOWN RD. R/W

LCB N12°47'43"W 417.78'
ARC L 417.81'
R. 5,879.58'

CURVE DATA (NB)

P.I.	500+65.07
X	2,084,830.000
Y	508,518.000
D.	14°12'55.32" LT.
T.	714.44'
L.	L42L54'
R.	5,729.58'

CURVE DATA (SB)

P.I.	2050+58.97
X	2,084,732.99
Y	508,610.869
D.	14°12'55.32" LT.
T.	571.58'
L.	L137.23'
R.	5,833.66'