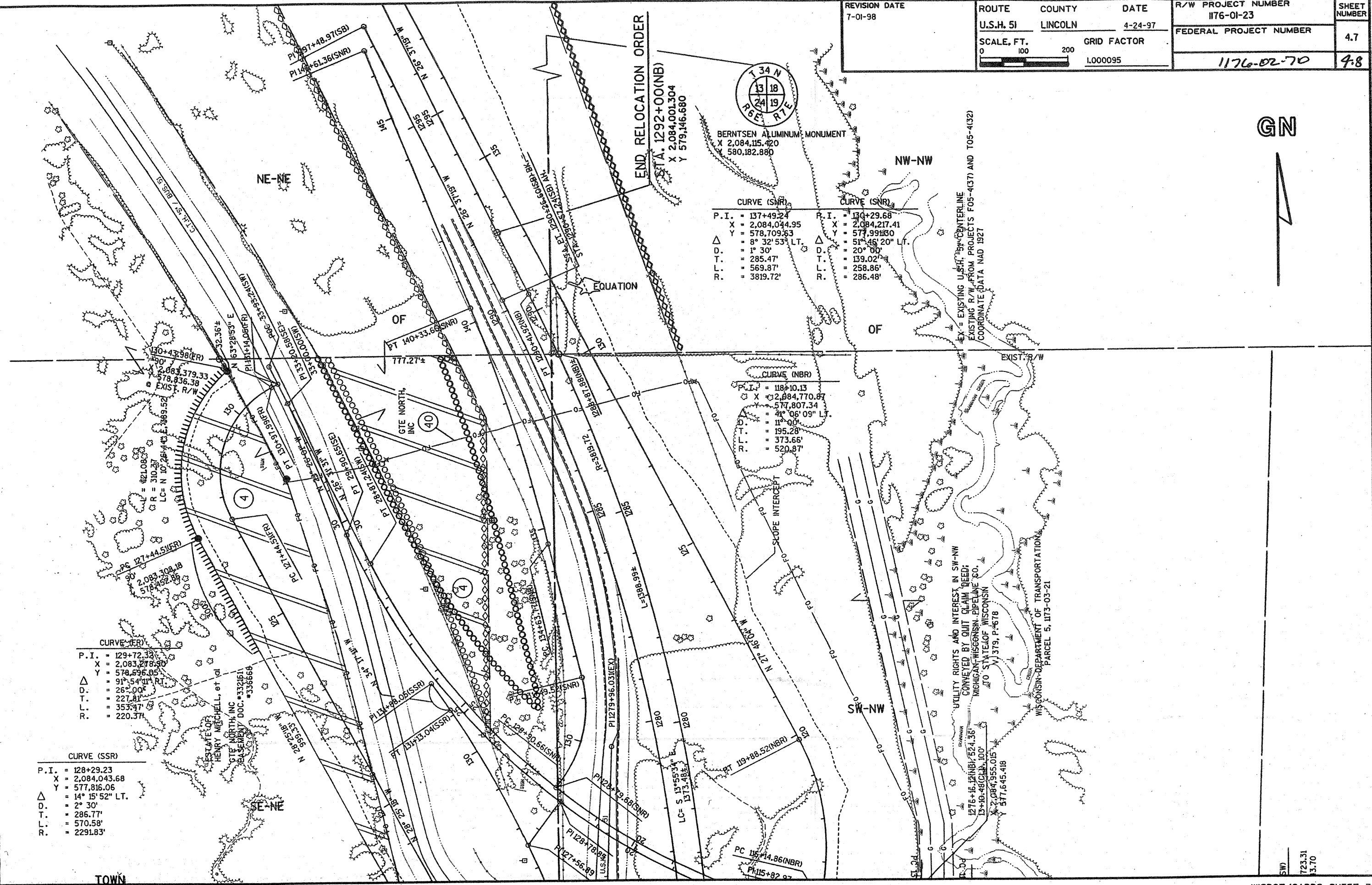
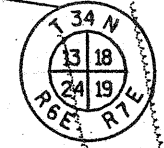


LEVELS ON - 1, 2, 3, 4, 5, 6, 7, 8, 9, 10, 11, 12, 13, 14, 15, 16, 17, 18, 19, 20, 21, 22, 23, 24, 25, 26, 27, 28, 29, 30, 31, 32, 33, 34, 35, 36, 37, 38, 39, 40, 41, 42, 43, 44, 45, 46, 47, 48, 49, 50, 51, 52, 53, 54, 55, 56, 57, 58, 59, 60, 61, 62, 63

REVISION DATE 7-01-98	ROUTE U.S.H. 51	COUNTY LINCOLN	DATE 4-24-97	R/W PROJECT NUMBER 1176-01-23	SHEET NUMBER 4.7
	SCALE, FT. 0 100 200	GRID FACTOR 1.000095		FEDERAL PROJECT NUMBER 1176-02-70	4.8



END RELOCATION ORDER
 STA. 1292+00(NB)
 X 2,084,001.304
 Y 579,146.680



CURVE (SSR)		CURVE (SNR)	
P. I.	= 137+49.24	P. I.	= 130+29.68
X	= 2,084,044.95	X	= 2,084,217.41
Y	= 578,709.63	Y	= 577,991.80
Δ	= 8° 32' 53" LT.	Δ	= 51° 46' 20" LT.
D.	= 1° 30'	D.	= 20° 00'
T.	= 285.47'	T.	= 139.02'
L.	= 569.87'	L.	= 258.86'
R.	= 3819.72'	R.	= 286.48'

CURVE (NBR)	
P. I.	= 118+10.13
X	= 2,084,770.87
Y	= 577,807.34
Δ	= 4° 06' 09" LT.
D.	= 11° 00'
T.	= 195.28'
L.	= 373.66'
R.	= 520.87'

CURVE (SR)	
P. I.	= 129+72.32
X	= 2,083,278.90
Y	= 578,836.38
Δ	= 91° 54' 11" RT.
D.	= 26° 00'
T.	= 227.81'
L.	= 353.71'
R.	= 220.37'

CURVE (SSR)	
P. I.	= 128+29.23
X	= 2,084,043.68
Y	= 577,816.06
Δ	= 14° 15' 52" LT.
D.	= 2° 30'
T.	= 286.77'
L.	= 570.58'
R.	= 2291.83'

UTILITY RIGHTS AND INTEREST IN SW-NW
 CONVEYED BY QUIT CLAIM DEED:
 NICHIGAN-WISCONSIN PIPELINE CO.
 TO STATE OF WISCONSIN
 V. 379, P. 678
 WISCONSIN DEPARTMENT OF TRANSPORTATION
 PARCEL 5, 1173-03-21