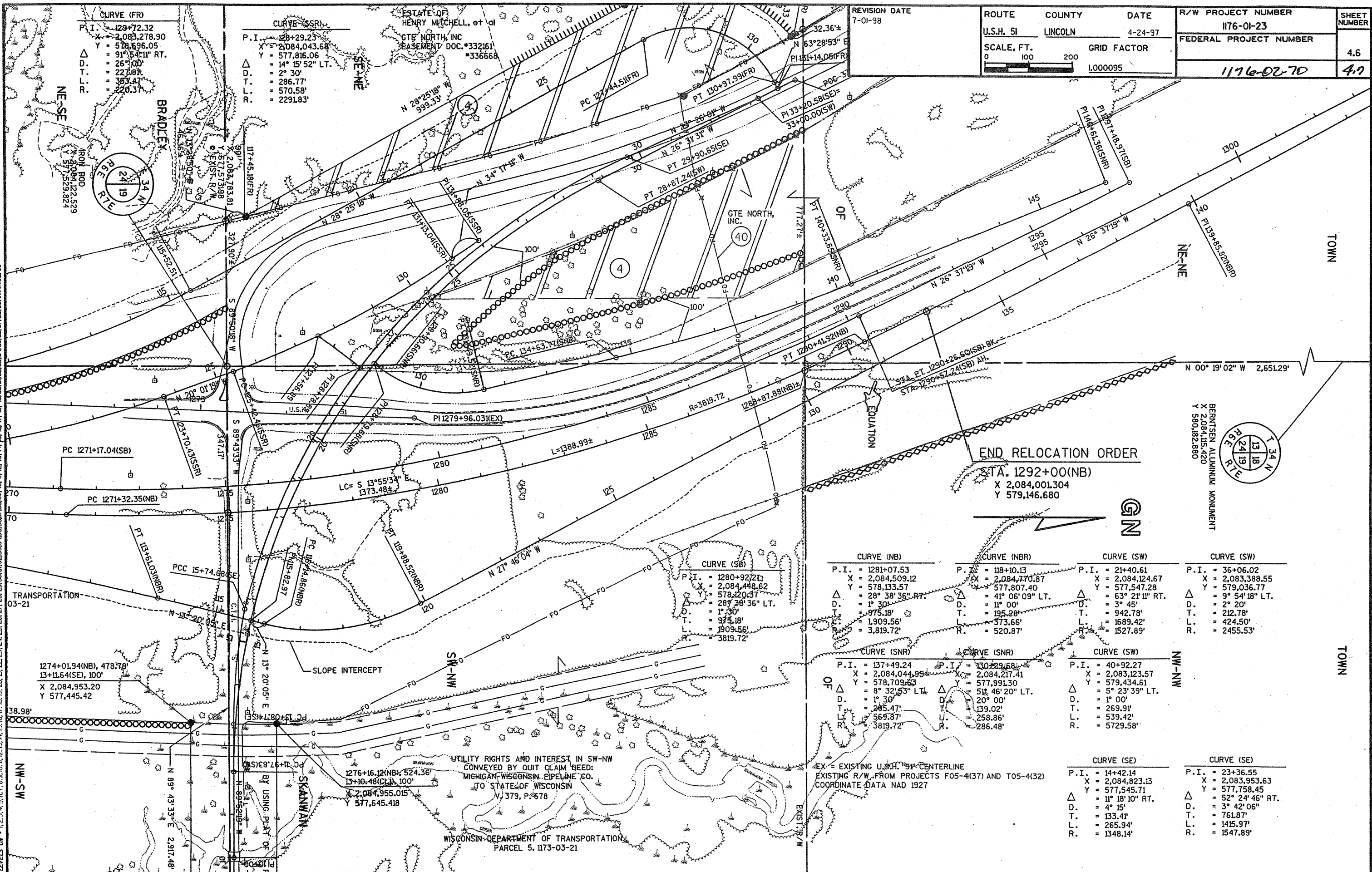
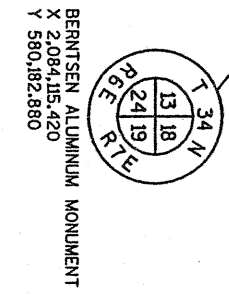


FILE NAME: D7 1176021176WS.DGN
 ORIGINATOR: DISTRICT 7 RHINELANDER
 REV. DATE: 04-21-97 PLOT SCALE: 201:2084891:000000 PLOT DATE: 21-DEC-1998 11:19



| | | | | | |
|--------------------------|-------------------------|-------------------------|-----------------|--------------------------------------|---------------------|
| REVISION DATE 7-01-98 | ROUTE U.S.H. 51 | COUNTY LINCOLN | DATE 4-24-97 | R/W PROJECT NUMBER 1176-01-23 | SHEET NUMBER 4.6 |
| | SCALE, FT. 0 100 200 | GRID FACTOR 1.000095 | | FEDERAL PROJECT NUMBER 1176-02-70 | 4.7 |



END RELOCATION ORDER
 STA. 1292+00(NB)
 X 2,084,001.304
 Y 579,146.680

| CURVE (NB) | CURVE (NBR) | CURVE (SW) | CURVE (SW) |
|---|---|---|---|
| P.I. = 1281+07.53 X = 2,084,509.12 Y = 578,133.57 Δ = 28° 38' 36" RT. D. = 1° 30' T. = 975.18' L. = 1,909.56' R. = 3,819.72' | P.I. = 118+10.13 X = 2,084,770.87 Y = 577,807.40 Δ = 41° 06' 09" LT. D. = 11° 00' T. = 195.28' L. = 373.66' R. = 520.87' | P.I. = 21+40.61 X = 2,084,124.67 Y = 577,547.28 Δ = 63° 21' 11" RT. D. = 3° 45' T. = 942.78' L. = 1,689.42' R. = 1,527.89' | P.I. = 36+06.02 X = 2,083,388.55 Y = 579,036.77 Δ = 9° 54' 18" LT. D. = 2° 20' T. = 212.78' L. = 424.50' R. = 2,455.53' |
| CURVE (SE) | CURVE (SE) | CURVE (SNR) | CURVE (SNR) |
| P.I. = 14+42.14 X = 2,084,823.13 Y = 577,545.71 Δ = 11° 18' 10" RT. D. = 4° 15' L. = 133.41' R. = 265.94' | P.I. = 23+36.55 X = 2,083,953.63 Y = 577,758.45 Δ = 52° 24' 46" RT. D. = 3° 42' 06" T. = 761.87' L. = 1,415.97' R. = 1,547.89' | P.I. = 137+49.24 X = 2,084,044.95 Y = 578,709.63 Δ = 8° 32' 53" LT. D. = 1° 30' T. = 285.47' L. = 569.87' R. = 3,819.72' | P.I. = 130+29.68 X = 2,084,217.41 Y = 577,991.30 Δ = 51° 46' 20" LT. D. = 20° 00' T. = 139.02' L. = 258.86' R. = 286.48' |
| CURVE (SW) | CURVE (SW) | CURVE (SNR) | CURVE (SNR) |
| P.I. = 40+92.27 X = 2,083,123.57 Y = 579,434.61 Δ = 5° 23' 39" LT. D. = 1° 00' T. = 269.91' L. = 539.42' R. = 5729.58' | P.I. = 40+92.27 X = 2,083,123.57 Y = 579,434.61 Δ = 5° 23' 39" LT. D. = 1° 00' T. = 269.91' L. = 539.42' R. = 5729.58' | P.I. = 137+49.24 X = 2,084,044.95 Y = 578,709.63 Δ = 8° 32' 53" LT. D. = 1° 30' T. = 285.47' L. = 569.87' R. = 3,819.72' | P.I. = 130+29.68 X = 2,084,217.41 Y = 577,991.30 Δ = 51° 46' 20" LT. D. = 20° 00' T. = 139.02' L. = 258.86' R. = 286.48' |

EX = EXISTING U.S.H. 51 CENTERLINE
 EXISTING R/W FROM PROJECTS F05-4(37) AND T05-4(32)
 COORDINATE DATA NAD 1927

UTILITY RIGHTS AND INTEREST IN SW-NW
 CONVEYED BY QUIT CLAIM DEED:
 MICHIGAN WISCONSIN PIPELINE CO.
 TO STATE OF WISCONSIN
 V. 379, P. 678

WISCONSIN DEPARTMENT OF TRANSPORTATION
 PARCEL 5, 1173-03-21