

21-DEC-1998 1413

PLOT DATE:

2012084511000000

REV. DATE: 04-24-97

PLOT SCALE: 1"=100'

ORIGINATOR: DISTRICT 7 RHINELANDER

FILE NAME: D7 1176021176RW2.DGN

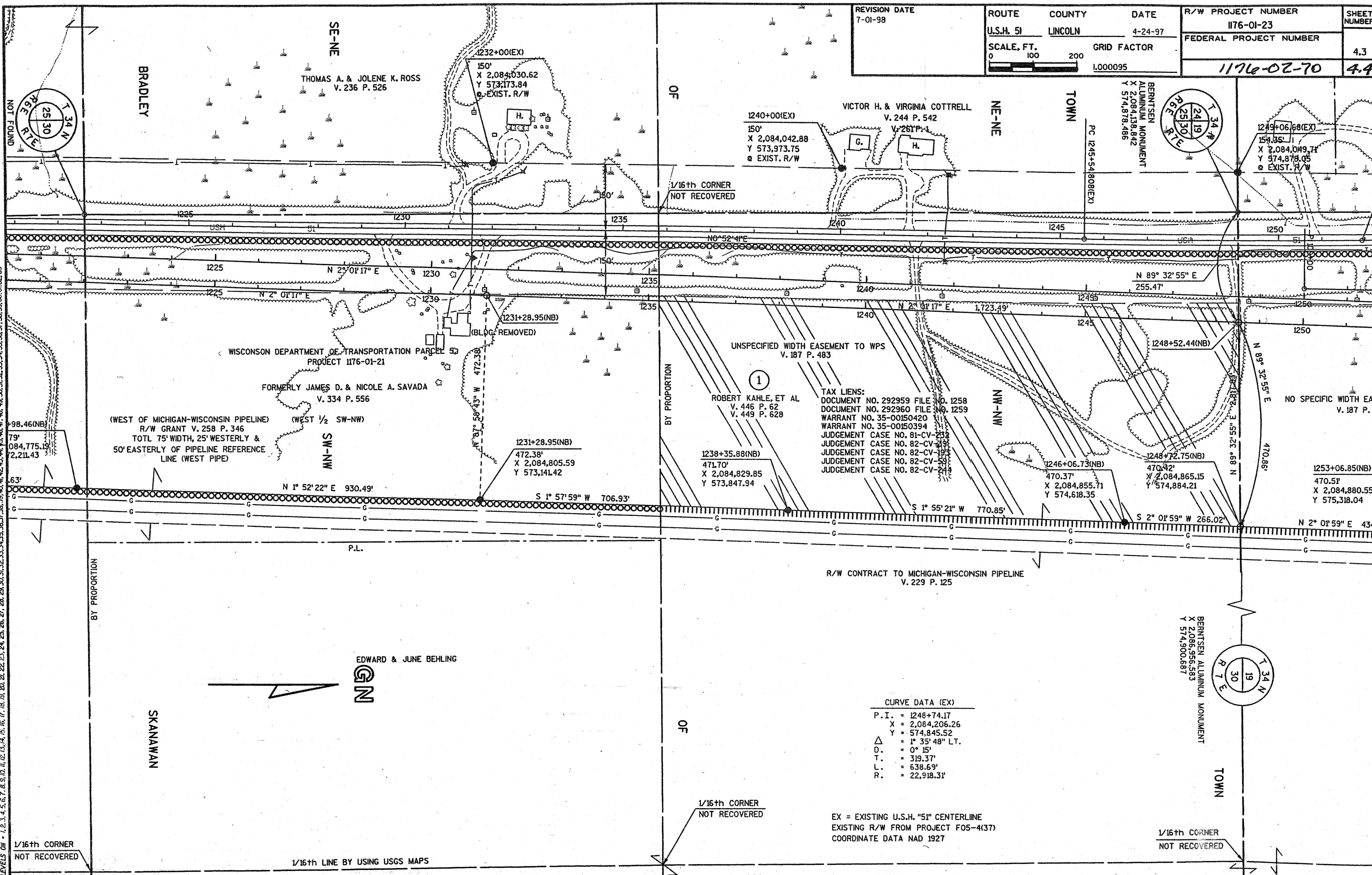
LEVELS ON - 1, 2, 3, 4, 5, 6, 7, 8, 9, 10, 11, 12, 13, 14, 15, 16, 17, 18, 19, 20, 21, 22, 23, 24, 25, 26, 27, 28, 29, 30, 31, 32, 33, 34, 35, 36, 37, 38, 39, 40, 41, 42, 43, 44, 45, 46, 47, 48, 49, 50, 51, 52, 53, 54, 55, 56, 57, 58, 59, 60, 61, 62, 63

BY PROPORTION

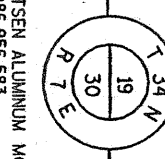
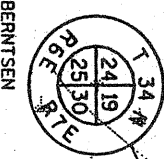
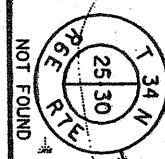
BY PROPORTION

BY PROPORTION

BY PROPORTION



REVISION DATE 7-01-98	ROUTE U.S.H. 51	COUNTY LINCOLN	DATE 4-24-97	R/W PROJECT NUMBER 1176-01-23	SHEET NUMBER 4.3
	SCALE, FT. 0 100 200	GRID FACTOR 1.000095		FEDERAL PROJECT NUMBER 1176-02-70	4.4



1/16th CORNER NOT RECOVERED

1/16th CORNER NOT RECOVERED

1/16th CORNER NOT RECOVERED

1/16th LINE BY USING USGS MAPS

TAX LIENS:
DOCUMENT NO. 292959 FILE NO. 1258
DOCUMENT NO. 292960 FILE NO. 1259
WARRANT NO. 35-00150420
WARRANT NO. 35-00150394
JUDGEMENT CASE NO. 81-CV-233
JUDGEMENT CASE NO. 82-CV-391
JUDGEMENT CASE NO. 82-CV-191
JUDGEMENT CASE NO. 82-CV-58
JUDGEMENT CASE NO. 82-CV-244

CURVE DATA (EX)
P.I. = 1248+74.17
X = 2,084,206.26
Y = 574,845.52
Δ = 1° 35' 48" LT.
D. = 0° 15'
T. = 319.37'
L. = 638.69'
R. = 22,918.31'

EX = EXISTING U.S.H. "51" CENTERLINE
EXISTING R/W FROM PROJECT F05-4(37)
COORDINATE DATA NAD 1927