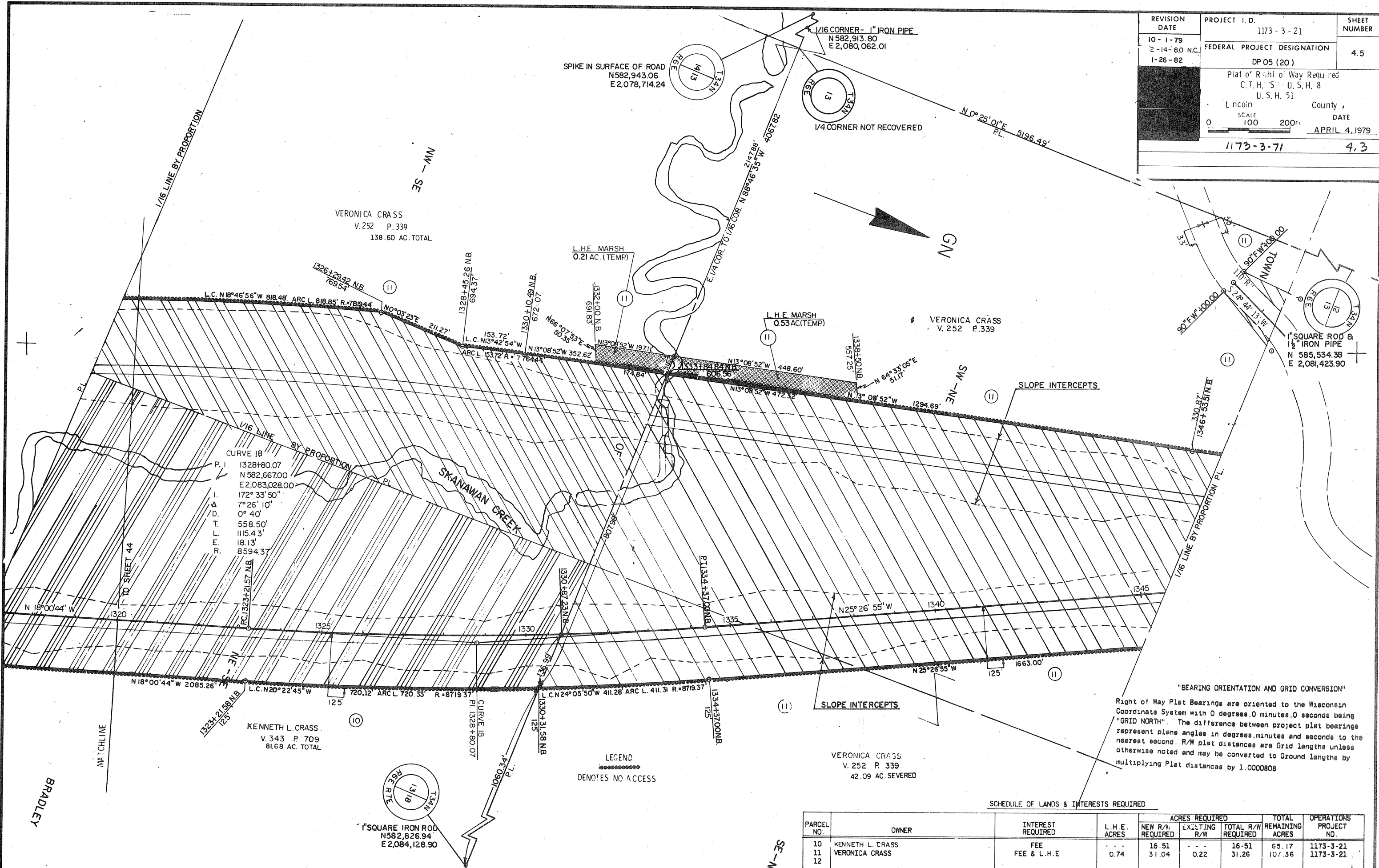


REVISION DATE	PROJECT I. D.	SHEET NUMBER
10-1-79	1173-3-21	4.5
2-14-80 N.C.	FEDERAL PROJECT DESIGNATION	
1-26-82	DP 05 (20)	
	Plat of Right of Way Required	
	C.T.H. S. U.S.H. 8	
	U.S.H. 51	
	Lincoln County,	DATE
	SCALE 100 200'	APRIL 4, 1979
	1173-3-71	4.3



"BEARING ORIENTATION AND GRID CONVERSION"
Right of Way Plat Bearings are oriented to the Wisconsin Coordinate System with 0 degrees, 0 minutes, 0 seconds being "GRID NORTH". The difference between project plat bearings represent plane angles in degrees, minutes and seconds to the nearest second. R/W plat distances are Grid lengths unless otherwise noted and may be converted to Ground lengths by multiplying Plat distances by 1.0000808