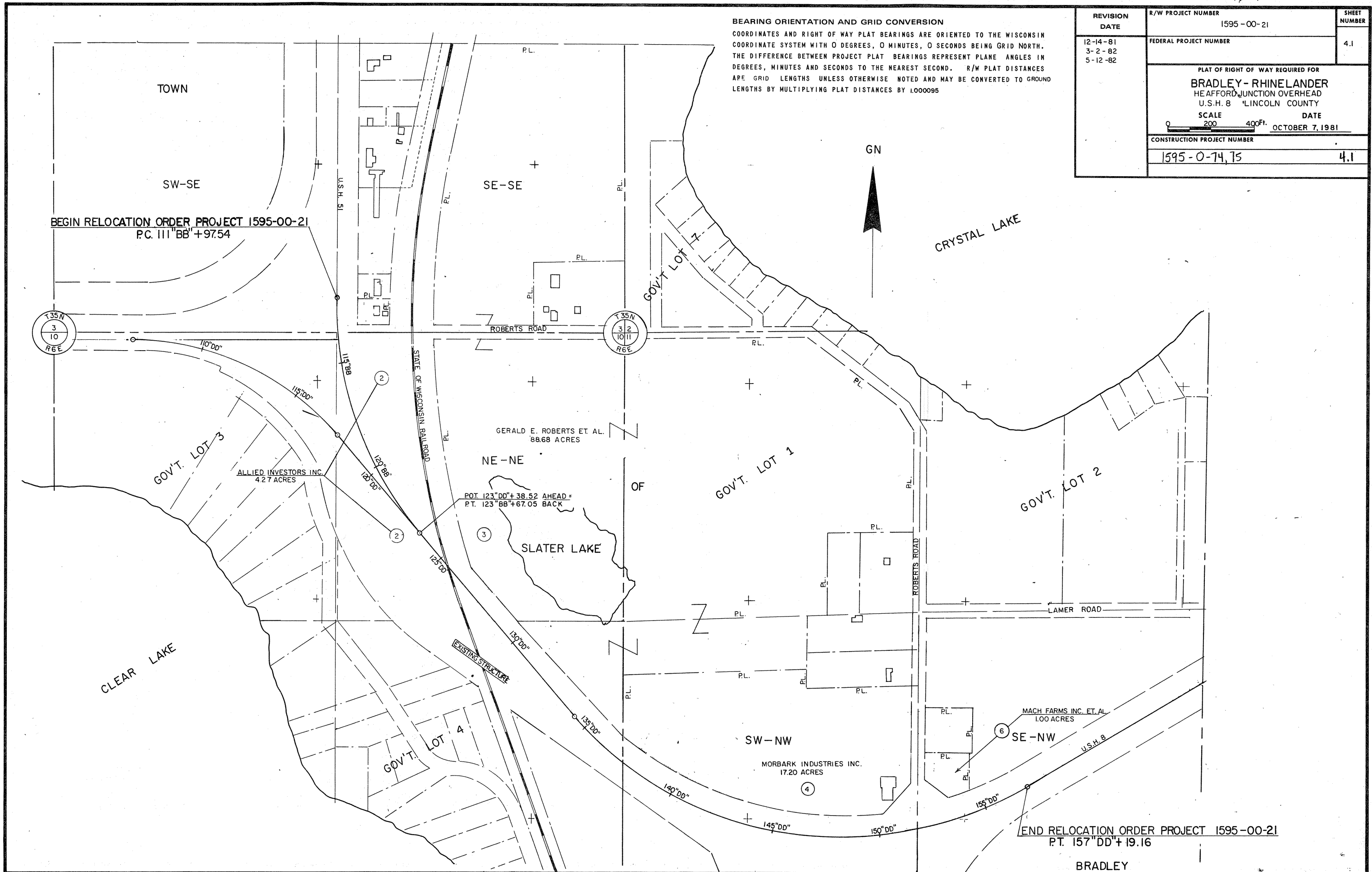


BEARING ORIENTATION AND GRID CONVERSION
 COORDINATES AND RIGHT OF WAY PLAT BEARINGS ARE ORIENTED TO THE WISCONSIN COORDINATE SYSTEM WITH 0 DEGREES, 0 MINUTES, 0 SECONDS BEING GRID NORTH. THE DIFFERENCE BETWEEN PROJECT PLAT BEARINGS REPRESENT PLANE ANGLES IN DEGREES, MINUTES AND SECONDS TO THE NEAREST SECOND. R/W PLAT DISTANCES ARE GRID LENGTHS UNLESS OTHERWISE NOTED AND MAY BE CONVERTED TO GROUND LENGTHS BY MULTIPLYING PLAT DISTANCES BY 1.000095

REVISION DATE	R/W PROJECT NUMBER	SHEET NUMBER
12-14-81 3-2-82 5-12-82	1595-00-21	4.1
FEDERAL PROJECT NUMBER		
PLAT OF RIGHT OF WAY REQUIRED FOR BRADLEY - RHINELANDER HEAFFORD JUNCTION OVERHEAD U.S.H. 8 LINCOLN COUNTY		
SCALE		DATE
0 200 400 Ft.		OCTOBER 7, 1981
CONSTRUCTION PROJECT NUMBER		
1595-0-74,75		4.1



BEGIN RELOCATION ORDER PROJECT 1595-00-21
 P.C. 111°BB'+97.54

END RELOCATION ORDER PROJECT 1595-00-21
 P.T. 157°DD'+19.16