

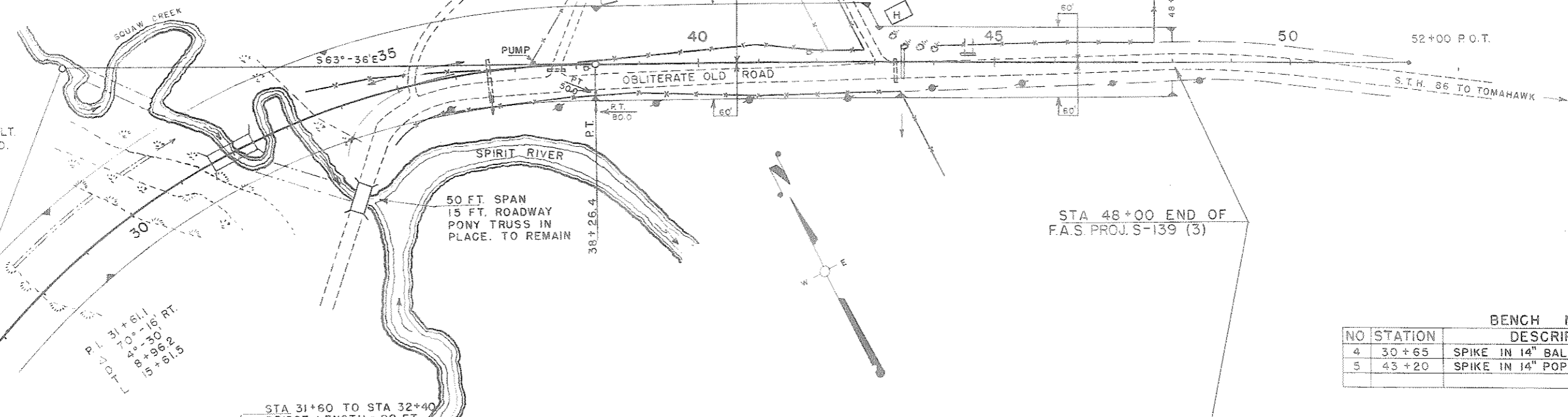
STA 32+00 LT & RT
CHANNEL CHANGE REQ'D.-550 C.Y.
WASTE IN OLD CHANNEL.

STA 37+70 RE. LT.
REMOVE 24" X 16' PIPE CULV.

STA 44+50 REMOVE 18" X 12'
PIPE CULV. 1-24" X 28' PIPE
CULVERT REQ'D.

CHANNEL CHANGE SECTION

STA 30+25-30+80 LT.
SPECIAL DITCH REQ'D.
25 C.Y. - WASTE



STA 48+00 END OF
F.A.S. PROJ. S-139 (3)

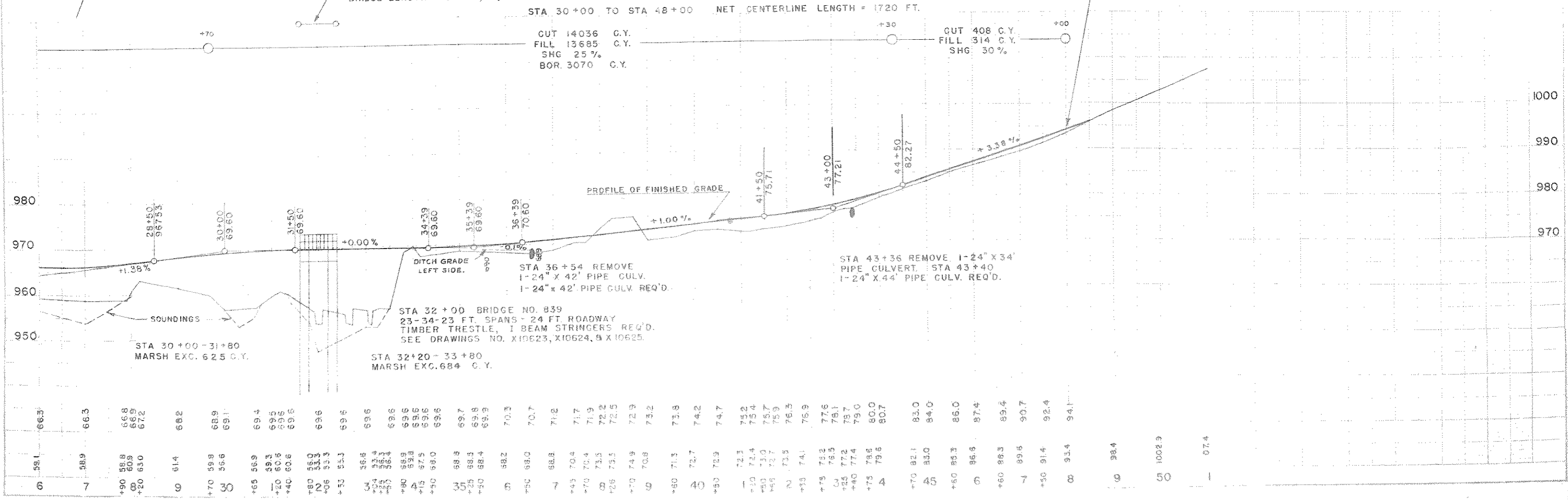
STA 31+60 TO STA 32+40
BRIDGE LENGTH = 80 FT.

STA 30+00 TO STA 48+00 NET CENTERLINE LENGTH = 1720 FT.

CUT 14036 C.Y.
FILL 13685 C.Y.
SHG 25 %
BOR. 3070 C.Y.

OUT 408 C.Y.
FILL 314 C.Y.
SHG 30 %

BENCH MARKS			
NO	STATION	DESCRIPTION	ELEV.
4	30+65	SPIKE IN 14" BALSAM 55' LT.	961.99
5	43+20	SPIKE IN 14" POPLAR 115' RT.	971.40



STA 30+00-31+80
MARSH EXC. 625 C.Y.

STA 32+20-33+80
MARSH EXC. 684 C.Y.

STA 36+54 REMOVE
1-24" X 42' PIPE CULV.
1-24" X 42' PIPE CULV. REQ'D.

STA 43+36 REMOVE 1-24" X 34'
PIPE CULVERT. STA 43+40
1-24" X 44' PIPE CULV. REQ'D.

STA 32+00 BRIDGE NO. 839
23-34-23 FT. SPANS - 24 FT. ROADWAY
TIMBER TRESTLE, I BEAM STRINGERS REQ'D.
SEE DRAWINGS NO. X10623, X10624, 9 X10625.

8149

8152