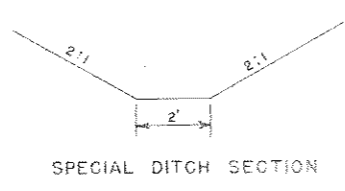
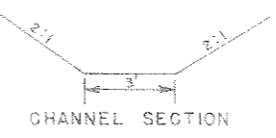


P.I. 10+20.0
Δ 44°-00' L
D 3'-00'
T 771.7
L 1466.7



STA 27+90 TO STA 29+70
LT. SP DITCH REQ'D.
25 C.Y. - WASTE

STA 21+65 LT. & RT.
CLEAN CHANNEL
50 C.Y. - WASTE

P.I. 31+61.1
Δ 70°-16' R
D 4'-30'
T 896.2
L 1561.5

BENCH MARKS			
NO	STATION	DESCRIPTION	ELEV.
1	2+14	SPIKE IN 8" POPPLE 45' RT.	995.47
2	11+70	U.S.G. & G.S. B.M. 206' RT.	1000.00
3	20+95	SPIKE IN 8" ELM 80' LT.	978.42

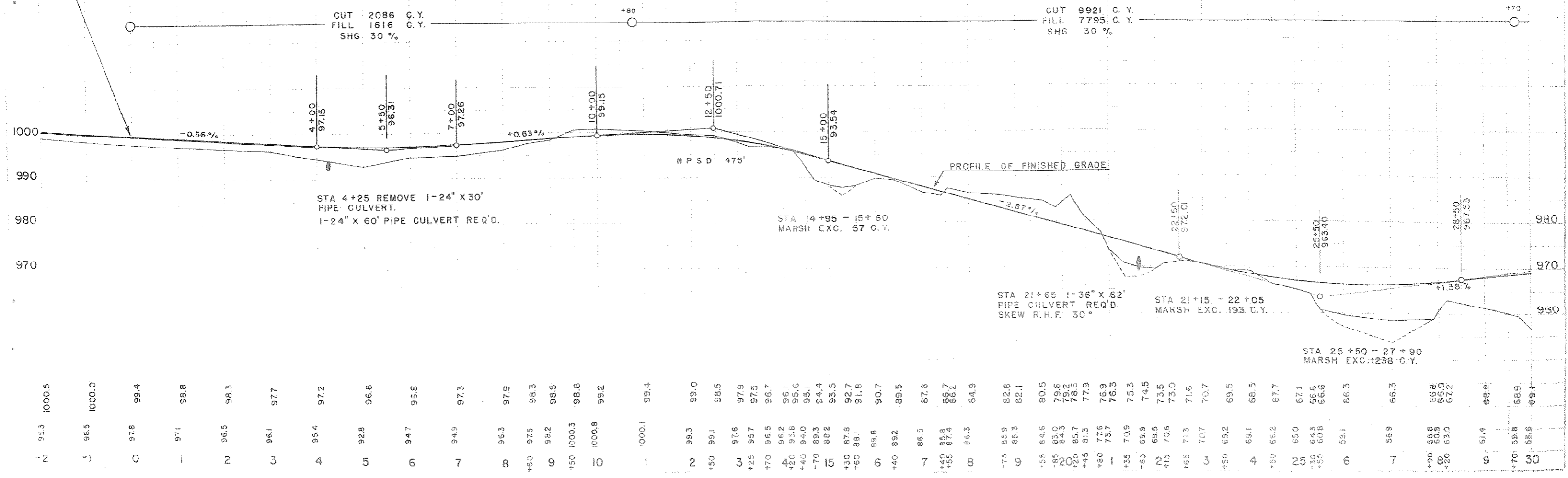
ASSUMED DATUM

STA 0+00 BEGINNING OF
F.A.S. PROJ. S-139 (3)

STA 0+00 TO STA 30+00 NET CENTER LINE LENGTH = 3000 FT.

CUT 2086 C.Y.
FILL 1616 C.Y.
SHG 30%

CUT 9921 C.Y.
FILL 7795 C.Y.
SHG 30%



STA 4+25 REMOVE 1-24" X 30"
PIPE CULVERT.
1-24" X 60" PIPE CULVERT REQ'D.

STA 14+95 - 15+60
MARSH EXC. 57 C.Y.

STA 21+65 1-36" X 62"
PIPE CULVERT REQ'D.
SKEW R.H.F. 30°

STA 21+15 - 22+05
MARSH EXC. 193 C.Y.

STA 25+50 - 27+90
MARSH EXC. 1238 C.Y.

8152

8149