

REVISION DATE  
 11-16-89  
 6-1-90  
 11-6-90 N.C.

ROUTE COUNTY DATE  
 S.T.H. 86 LINCOLN 8-25-89

SCALE, FT. GRID FACTOR  
 0 200  
 1,000,095

R/W PROJECT NUMBER	SHEET NUMBER
9215-06-21	4.6
FEDERAL PROJECT NUMBER	

GN

TOWN

SE-SW

SW-SW

LEO & GERTRUDE M. DUCHATSCHKE  
 V. 219 P. 407

BARBARA KOCH  
 V. 186 P. 170  
 V. 279 P. 486

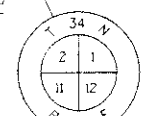
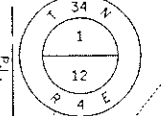
U.S.A.  
 BY U.S. PATENT 5-15-1874  
 ENTIRE SW 1/4 MINERAL RESERVATION  
 V. 46 P. 173

GENERAL TELEPHONE CO. EASEMENT  
 V. 290 P. 480 (NO WIDTH)

OF

GENERAL TELEPHONE CO. EASEMENT  
 V. 290 P. 217 (NO WIDTH)

RR SPIKE  
 X 2018276.12  
 Y 590942.59



RR SPIKE  
 X 2015614.17  
 Y 590924.72

JEROME P. & RUTH M. SCHOLZ  
 V. 358 P. 557

(20)

CHARLES IRVING STILLER, ET. AL.  
 V. 400 P. 501

NW-NW

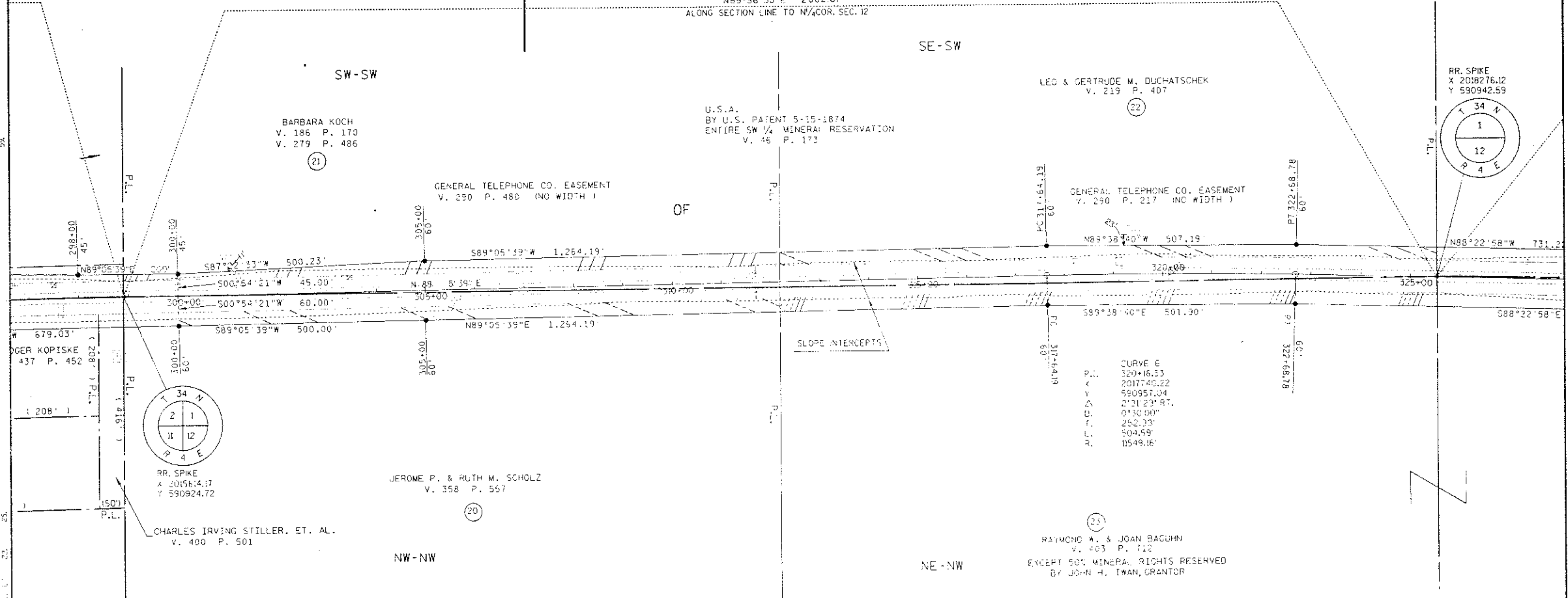
RAYMOND W. & JOAN BAGUHN  
 V. 403 P. 712  
 EXCEPT 50% MINERAL RIGHTS RESERVED  
 BY JOHN H. EWAN, GRANTOR

(25)

NE-NW

TOMAHAWK

N89°36'55"E 2662.01'  
 ALONG SECTION LINE TO N 1/4 COR. SEC. 12



SLOPE INTERCEPTS

CURVE 6  
 P.C. 320+16.23  
 X 2017740.22  
 Y 590957.04  
 Δ 2°31'23" RT.  
 D. 0°30'00"  
 T. 252.33'  
 L. 504.59'  
 R. 10549.16'

LEVELS ON