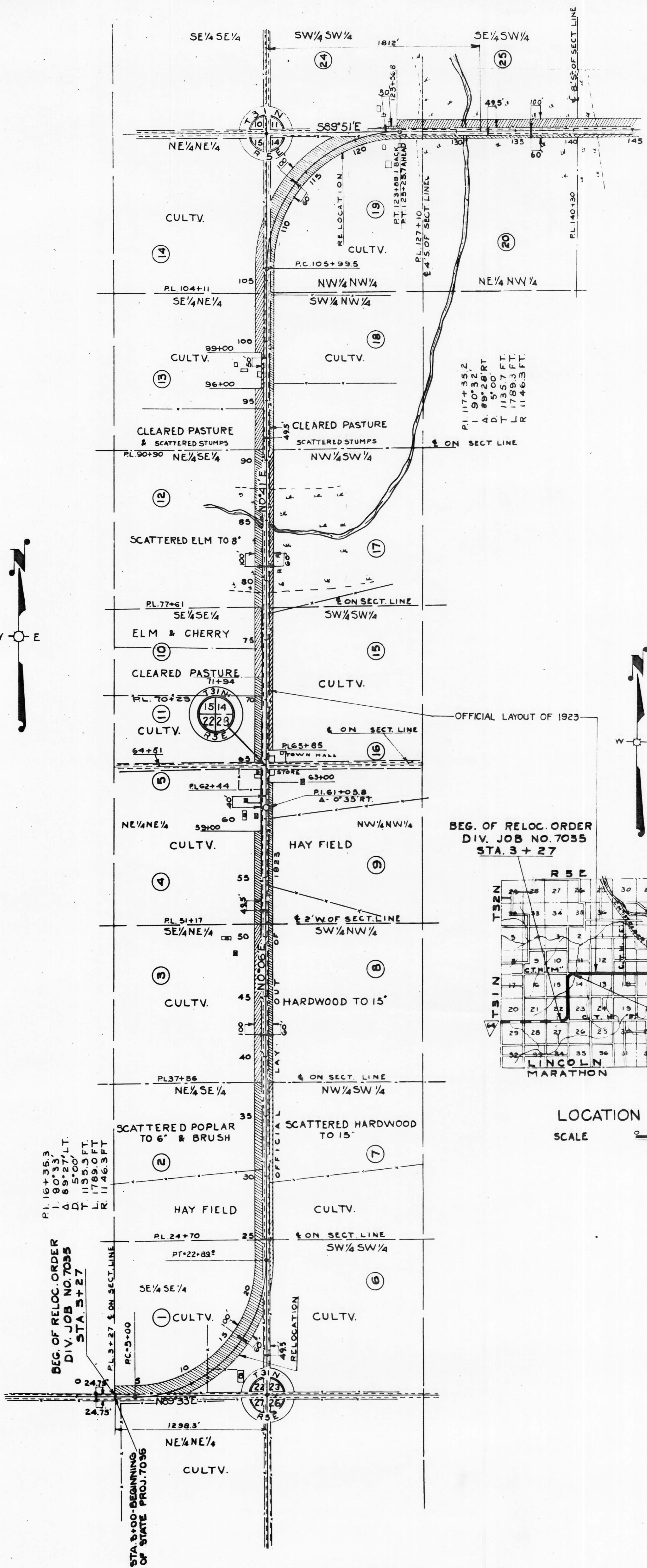
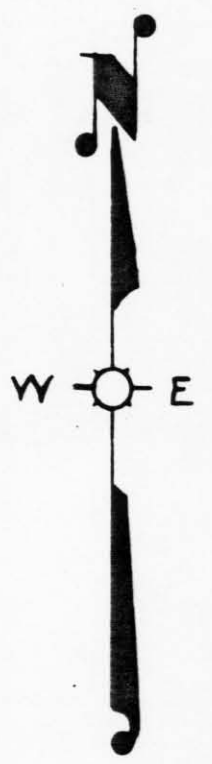


STATE	7035	TOTAL SHEETS	4	79
PROJECT NO.	7035			
DATE				
BY				
CHECKED BY				
SCALE				
PROJECT NO.	7035			

DIVISION JOB NO. 7035



PLAT OF RIGHT OF WAY REQUIRED
DIVISION JOB NO. 7035
 MEDFORD - MERRILL ROAD
 ST. H. NO. 64 LINCOLN COUNTY

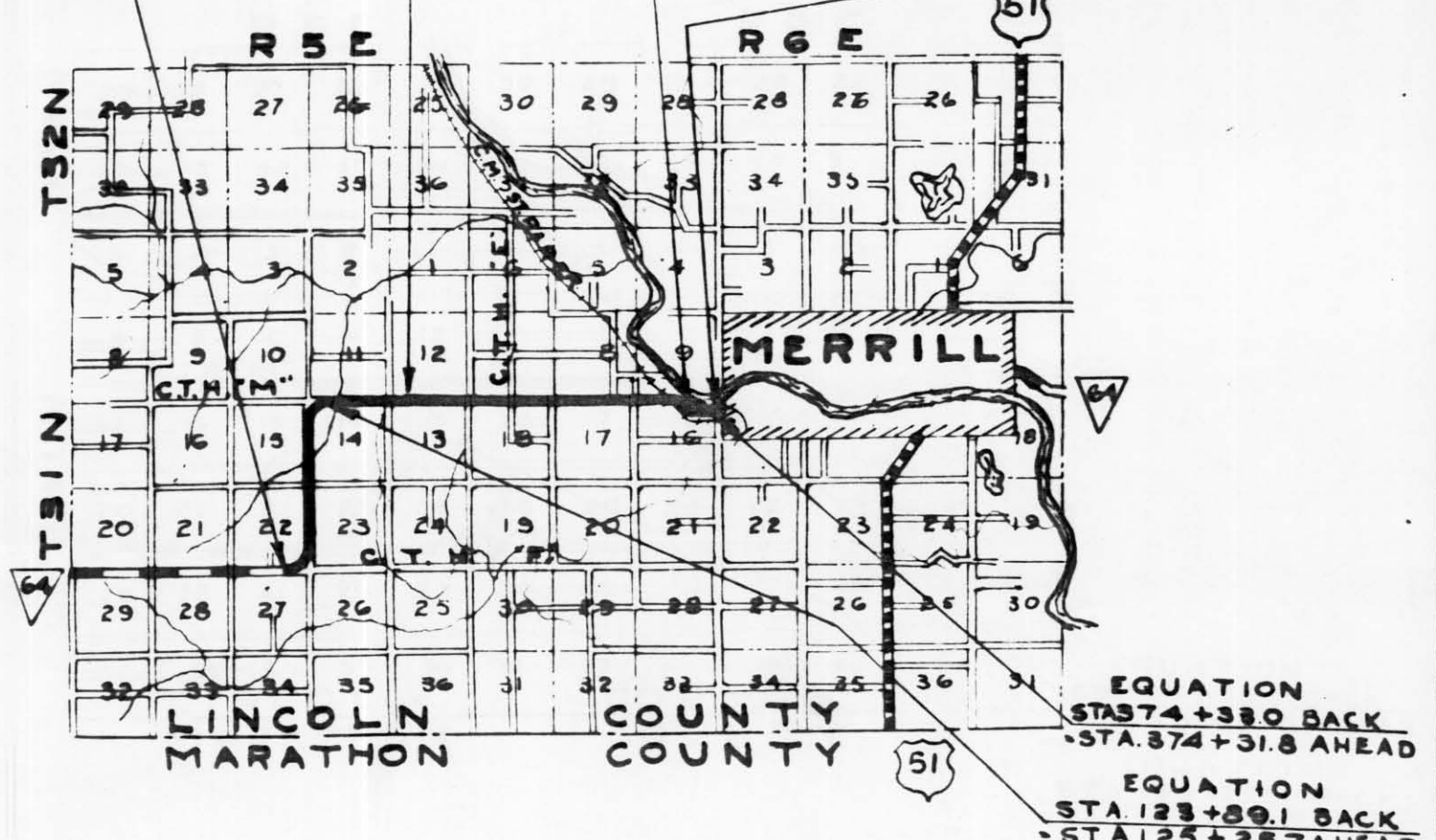
SCALE
 0 200 400 600 800
 FEET

DRAWN BY M. WEBER & K. H. BOLLER
 COMPUTED BY K. H. BOLLER
 CHECKED BY B. TUTTLE
 REVISED 6-7-37

BEG. OF RELOC. ORDER
 DIV. JOB NO. 7035
 STA. 3 + 27

END OF STATE PROJECT 7035
 STA. 348 + 00

END OF RELOC. ORDER
 DIV. JOB NO. 7035
 STA. 380 + 28.6



LOCATION SKETCH
 SCALE 0 1 2 3 4 MILES