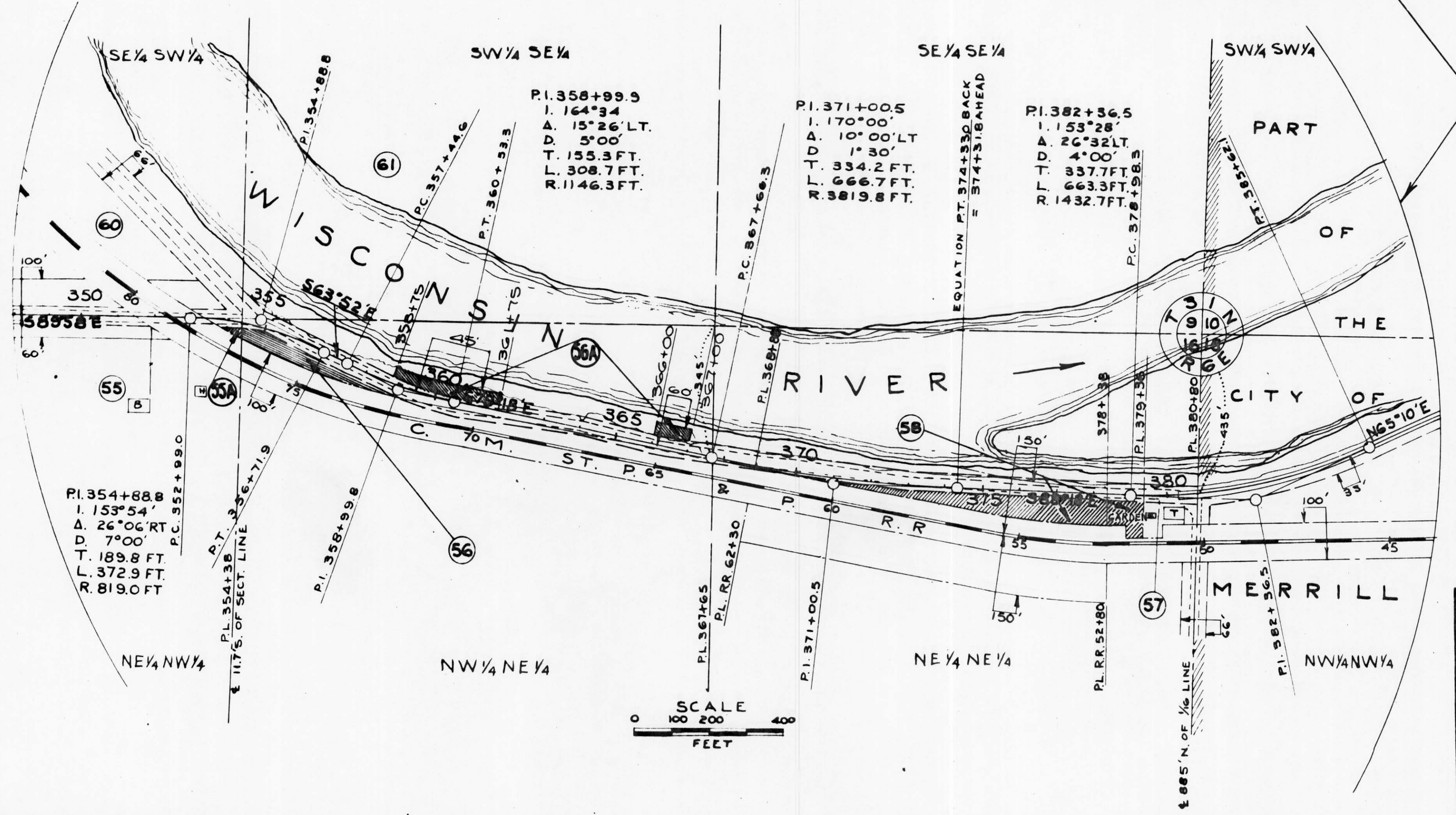


END OF STATE PROJECT 7035  
STA. 348+00

END OF RELOC. ORDER  
DIV. JOB NO. 7035  
STA. 380+80



DRAWN BY K.H. BOLLER  
COMPUTED BY K.H. BOLLER  
CHECKED BY B. TUTTLE REVISED 6-7-37

PLAT OF RIGHT OF WAY REQUIRED  
DIVISION JOB NO. 7035  
MEDFORD - MERRILL ROAD  
S.T.H. NO. 64 LINCOLN COUNTY  
SCALE  
0 200 400 600 800  
FEET