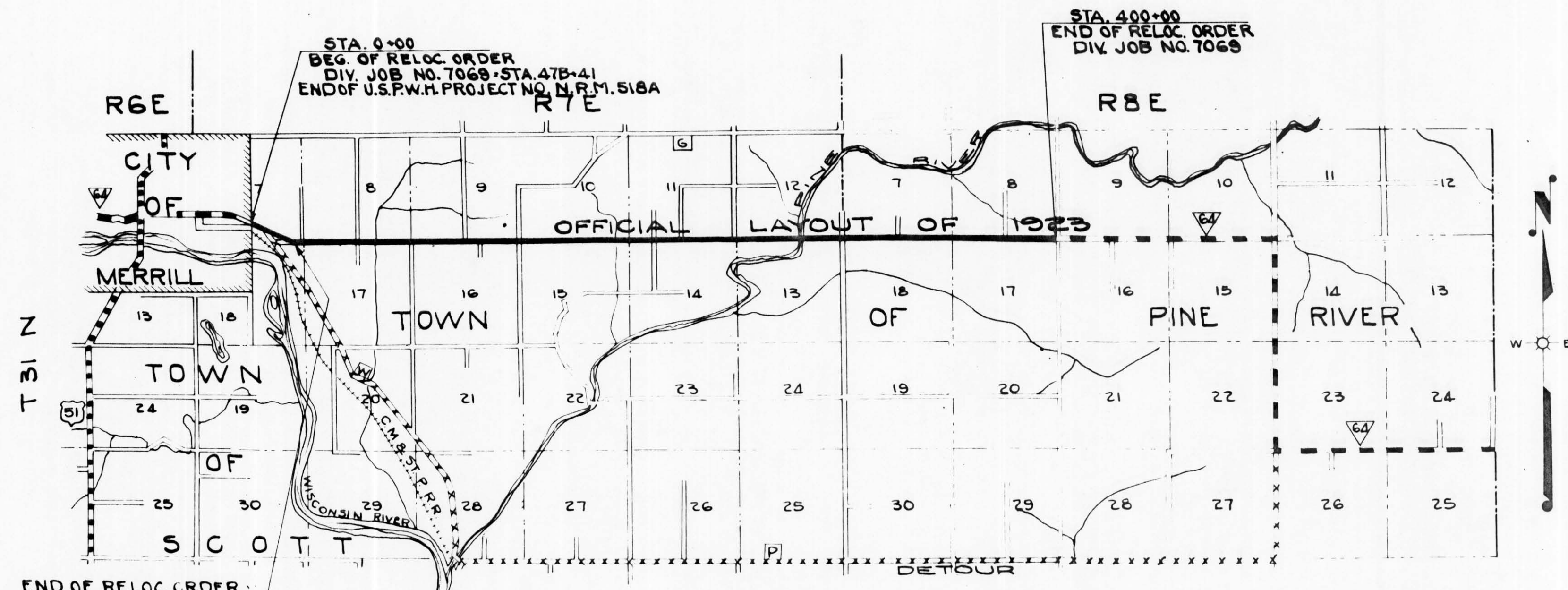
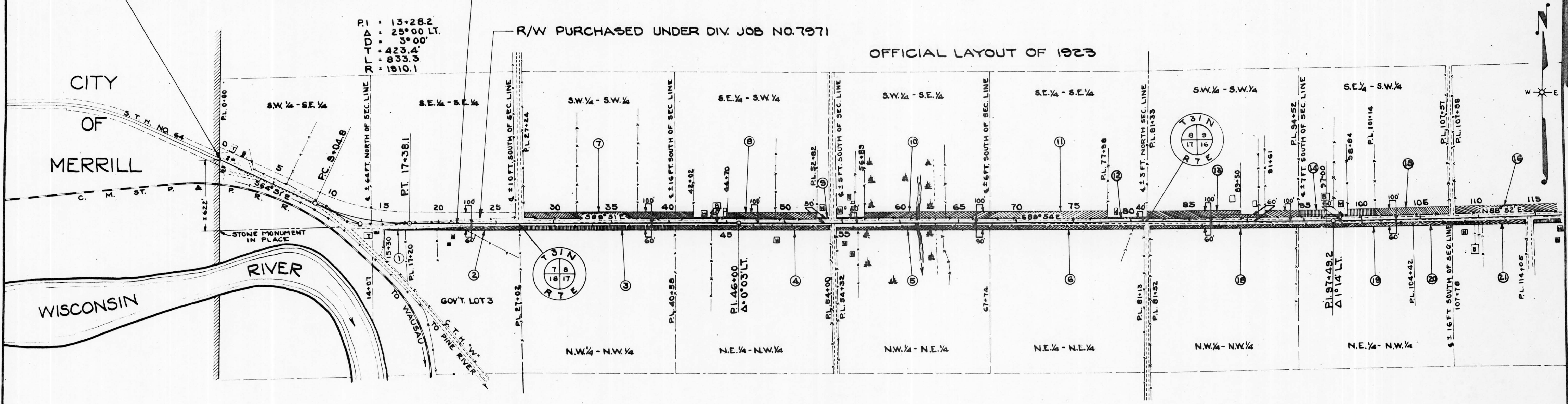


FED. ROAD DIST. NO.	STATE	STATE PROJ. NO.	SHEET NO.	TOTAL SHEETS
4	WISC.	7069	4	90

DIVISION JOB NO. 7069

BEG. OF RELOC. ORDER
DIV. JOB NO. 7069
STA. 0+00 - STA. 47B+41
END OF U.S.P.W.H. PROJECT NO. N.R.M. 518A

END OF RELOC. ORDER
DIV. JOB NO. 7971
STA. 69B+00
STA. 21+55 DIV. JOB NO. 7069



END OF RELOC. ORDER
DIV. JOB NO. 7971
STA. 69B+00
STA. 21+55 DIV. JOB NO. 7069

LOCATION SKETCH
SCALE 0 1 2 MILES

DRAWN BY W.V.G. AND C.W.G.
COMPUTED BY C.W.G.
CHECKED BY C.E.H.

REVISED JUNE 21-1939 L.M.P.
REVISED BY MMH. FEB. 17, 1939
REVISED 7.6/1938
BY W.V.G.

PLAT OF RIGHT OF WAY REQUIRED
DIVISION JOB NO. 7069
MERRILL - ANTIGO ROAD
S.T.H. NO. 64 LINCOLN COUNTY
SCALE 0 1 2 3 4 5 6