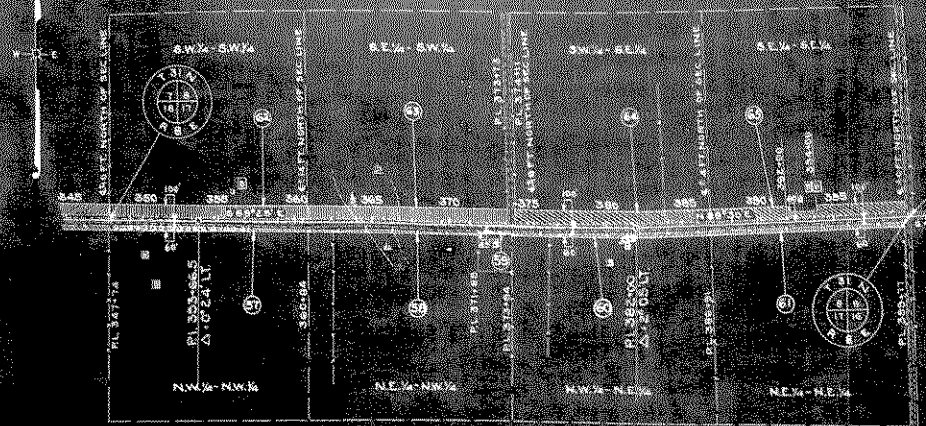


OFFICIAL LAYOUT OF 1923



PAR	OWNER	ADDRESS	DESCRIPTION	ACRES PURCHASED			TOTAL	PAR
				MARSH	UNIMPROVED	IMPROVED		
1	AUGUST GUTZMER AND WIFE		PART OF GOVT LOT 3 SEC. 18 T31N R7E	0.00	0.00	0.00	0.00	1
2	FRED NIENOW		PART OF GOVT LOT 3 SEC. 18 T31N R7E	0.00	0.00	0.00	0.00	2
3	MRS. GEO. ROTH LISBERG		NW 1/4 NW 1/4 SEC. 17 T31N R7E	0.00	1.46	0.00	1.46	3
4	GUST DETTMERING		NE 1/4 NW 1/4 SEC. 17 T31N R7E	0.00	0.00	1.29	1.29	4
5	ROBERT BOETTCHER		NW 1/4 NE 1/4 SEC. 17 T31N R7E	0.77	0.00	0.53	1.30	5
6	"		NE 1/4 NE 1/4 SEC. 17 T31N R7E	0.00	0.07	1.02	1.09	6
7	CHARLES A. RUNGE		SW 1/4 SW 1/4 SEC. 8 T31N R7E	0.00	0.00	1.89	1.89	7
8	"		PART OF SE 1/4 SW 1/4 SEC. 8 T31N R7E	0.00	0.00	1.53	1.53	8
9	OTTO F. ZASTROW		PART OF SE 1/4 SW 1/4 SEC. 8 T31N R7E	0.00	0.00	0.05	0.05	9
10	GEORGE MEYER		SW 1/4 SE 1/4 SEC. 8 T31N R7E	1.16	0.00	0.70	1.86	10
11	"		PART OF SE 1/4 SE 1/4 SEC. 8 T31N R7E	0.00	0.00	1.81	1.81	11
12	SCHOOL DISTRICT NO.		PART OF SE 1/4 SE 1/4 SEC. 8 T31N R7E	0.00	0.00	0.16	0.16	12
13	WM. STECKLING		SW 1/4 SW 1/4 SEC. 8 T31N R7E	0.00	0.00	2.13	2.13	13
14	PAUL MANITZ		W 1/2 SE 1/4 SW 1/4 SEC. 9 T31N R7E	0.00	0.00	0.97	0.97	14
15	EMILIA KANITZ		E 1/2 SE 1/4 SW 1/4 SEC. 9 T31N R7E	0.00	0.00	1.03	1.03	15
16	HARRY BUCK		SW 1/4 SE 1/4 SEC. 9 T31N R7E	0.00	0.00	2.15	2.15	16
17	EMILIA GRUETZMACHER		SE 1/4 SE 1/4 SEC. 9 T31N R7E	0.00	0.00	2.33	2.33	17
18	ART BUCK		NW 1/4 NW 1/4 SEC. 16 T31N R7E	0.00	1.07	0.00	1.07	18
19	"		PART OF NE 1/4 NW 1/4 SEC. 16 T31N R7E	0.00	0.00	0.93	0.93	19
20	HARRY BUCK		PART OF NE 1/4 NW 1/4 SEC. 16 T31N R7E	0.00	0.00	0.30	0.30	20
21	"		PART OF NW 1/4 NE 1/4 SEC. 16 T31N R7E	0.00	0.00	0.58	0.58	21
22	OTTO BUCK		PART OF NW 1/4 NE 1/4 SEC. 16 T31N R7E	0.00	0.00	0.56	0.56	22
23	HUGO SEMRAU		NE 1/4 NE 1/4 SEC. 16 T31N R7E	0.00	0.00	1.04	1.04	23
24	CHAS. DREVES		PART OF NW 1/4 NW 1/4 SEC. 15 T31N R7E	0.00	0.00	1.30	1.30	24
25	FARMERS DAIRY CO.		PART OF NW 1/4 NW 1/4 SEC. 15 T31N R7E	0.00	0.00	0.03	0.03	25
26	CHAS. DREVES		NE 1/4 NW 1/4 SEC. 15 T31N R7E	0.00	0.83	0.36	1.29	26
27	AUGUST SCHLEIF		NW 1/4 NE 1/4 SEC. 15 T31N R7E	0.00	0.57	0.86	1.53	27
28	FRED VANSELOW		NE 1/4 NE 1/4 SEC. 15 T31N R7E	0.00	1.43	0.00	1.82	28
29	EMELIE GRUETZMACHER		SW 1/4 SW 1/4 SEC. 10 T31N R7E	0.00	0.00	2.24	2.24	29
30	ADOLPH D. HINZ		SE 1/4 SW 1/4 SEC. 10 T31N R7E	0.00	0.00	1.95	1.95	30
31	RICHARD WEEGE		SW 1/4 SE 1/4 SEC. 10 T31N R7E	0.00	0.00	1.42	1.42	31
32	FRANK LEMKE		SE 1/4 SE 1/4 SEC. 10 T31N R7E	0.44	1.15	0.00	1.59	32
33	"		SW 1/4 SW 1/4 SEC. 11 T31N R7E	0.00	0.00	1.61	1.61	33
			TOTAL THIS SHEET	2.76	6.68	31.58	41.02	

PLAT OF RIGHT OF WAY REQUIRED
 DIVISION JOB NO. 7069
 MERRILL — ANTIGO ROAD
 STH. NO. 64 LINCOLN COUNTY
 SCALE
 0 1 2 3 4 5 6 7 8 9 10