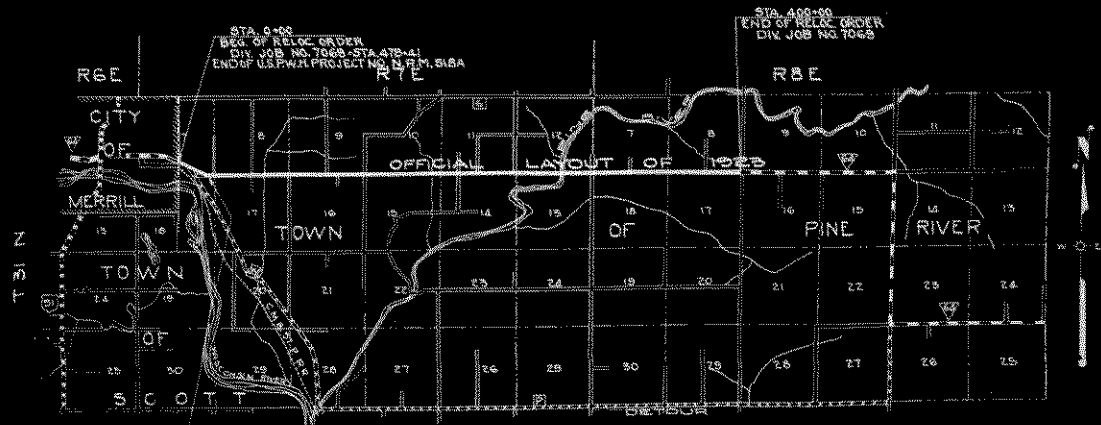
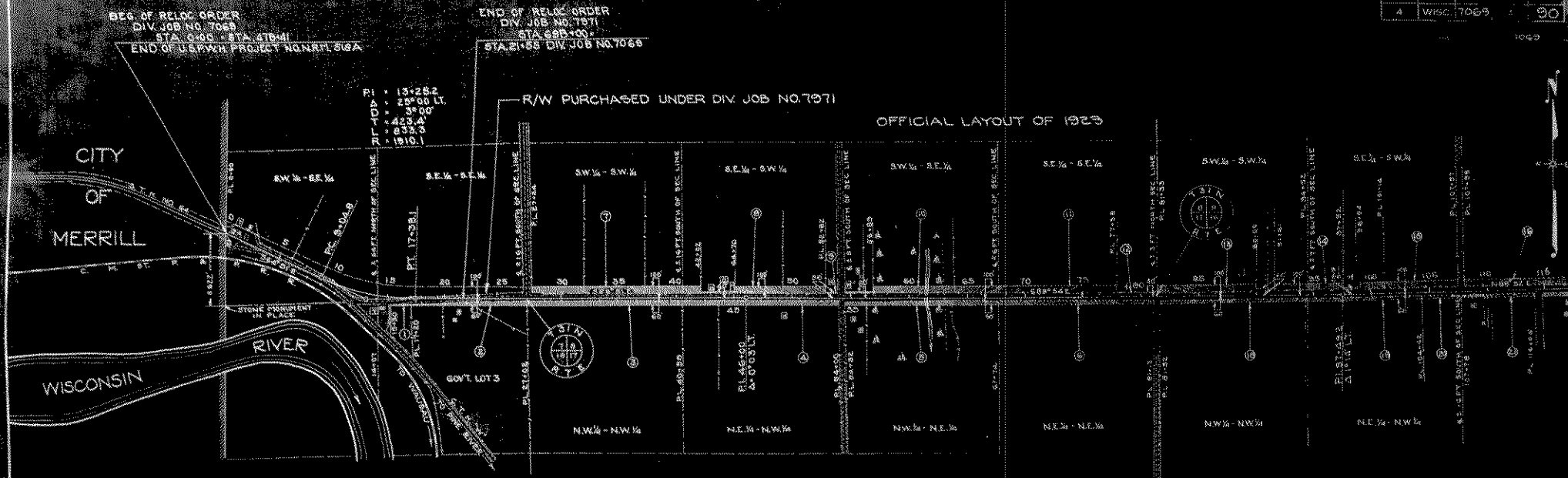


SECTION	STATE	DATE	NO.
4	WIS.	7069	20



LOCATION SKETCH
SCALE 0 1 2 MILES

DRAWN BY W.V. AND C.W.G.
COMPUTED BY C.W.G.
CHECKED BY C.E.M.

PLAT OF RIGHT OF WAY REQUIRED
DIVISION JOB NO. 7069
MERRILL ~ ANTIGO ROAD
S.T.H. NO. 64 LINCOLN COUNTY
SCALE
0 1 2 3 4 5 6 7 8 9 10

END OF RELOC. ORDER
DIV. JOB NO. 7971
STA. 65841
STA. 21-55 DIV. JOB NO. 7069

BEG. OF RELOC. ORDER
DIV. JOB NO. 7069
STA. 0-00 - STA. 478-41
END OF U.S.P.W.H. PROJECT NO. N.P.M. 518A

END OF RELOC. ORDER
DIV. JOB NO. 7971
STA. 689-00
STA. 21-55 DIV. JOB NO. 7069

PI = 13+262
= 25+00 LT.
= 42+00
= 83+24
= 1910.1

R/W PURCHASED UNDER DIV. JOB NO. 7971

OFFICIAL LAYOUT OF 1923

CITY OF MERRILL

WISCONSIN RIVER

SW 1/4 - SE 1/4

SE 1/4 - SE 1/4

SW 1/4 - SW 1/4

SE 1/4 - SW 1/4

SW 1/4 - SE 1/4

SE 1/4 - SE 1/4

SW 1/4 - SW 1/4

SE 1/4 - SW 1/4

NW 1/4 - NW 1/4

NE 1/4 - NW 1/4

NW 1/4 - NE 1/4

NE 1/4 - NE 1/4

NW 1/4 - NW 1/4

NE 1/4 - NW 1/4