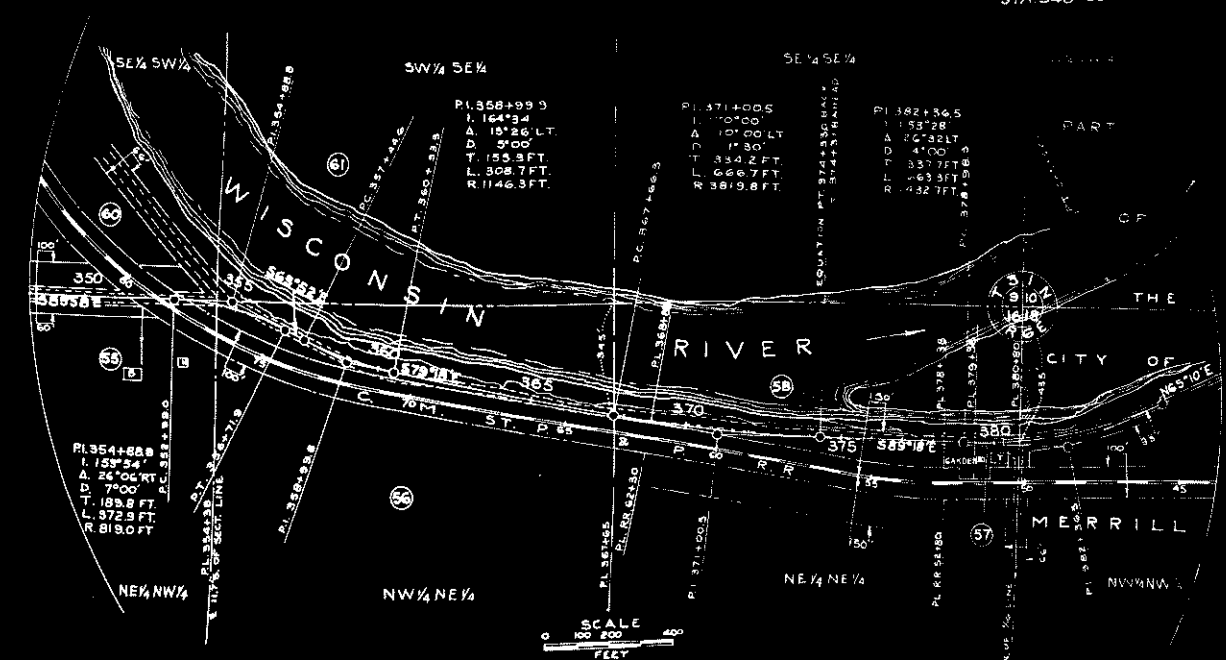




END OF STATE PROJECT 7035
 STA 348+00

END OF RELOC. ORDER
 DIV. JOB NO 7035
 STA 380+80



DRAWN BY K.H. BOLLER
 COMPUTED BY K.H. BOLLER
 CHECKED BY B. TUTTLE

PLAT OF RIGHT OF WAY REQUIRED
DIVISION JOB NO. 7035
 MEDFORD-MERRILL ROAD
 S.T. NO. 64 LINCOLN COUNTY

SCALE
 0 200 400 600 800
 FEET