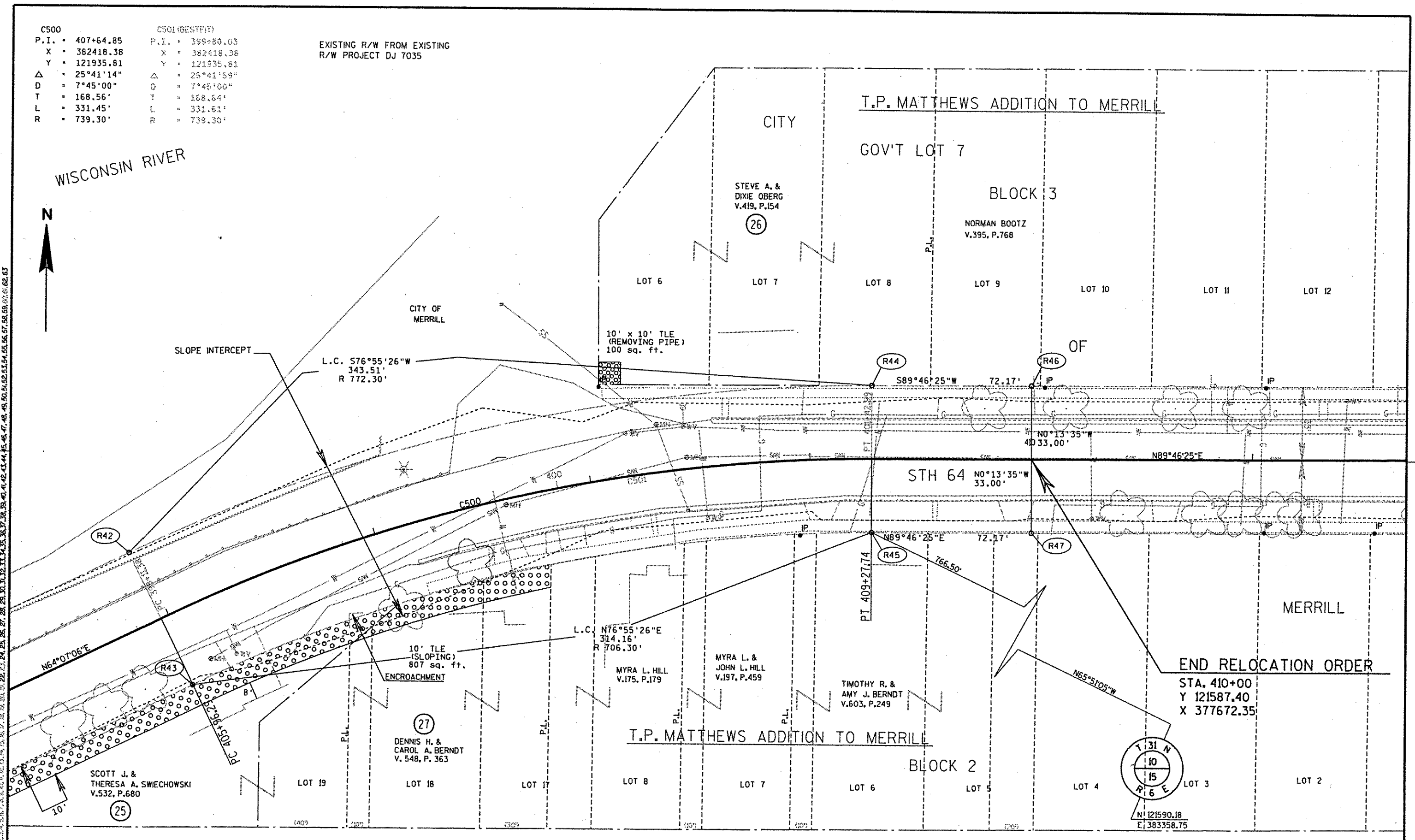


C500
 P.I. = 407+64.85
 X = 382418.38
 Y = 121935.81
 Δ = 25°41'14"
 D = 7°45'00"
 T = 168.56'
 L = 331.45'
 R = 739.30'

C501 (BESTFIT)
 P.I. = 399+80.03
 X = 382418.38
 Y = 121935.81
 Δ = 25°41'59"
 D = 7°45'00"
 T = 168.64'
 L = 331.61'
 R = 739.30'

EXISTING R/W FROM EXISTING
 R/W PROJECT DJ 7035



LEVELS ON - 1.2.3.4.5.6.7.8.9.10.11.12.13.14.15.16.17.18.19.20.21.22.23.24.25.26.27.28.29.30.31.32.33.34.35.36.37.38.39.40.41.42.43.44.45.46.47.48.49.50.51.52.53.54.55.56.57.58.59.60.61.62.63

REVISION DATE	DATE 10-23-01	SCALE, FEET 0 20 40	HWY: STH 64	CONSTRUCTION PROJECT NUMBER 9016-07-70	
	GRID FACTOR N/A		COUNTY: LINCOLN	STATE R/W PROJECT NUMBER 9016-07-21	PLAT SHEET NO: 4.13