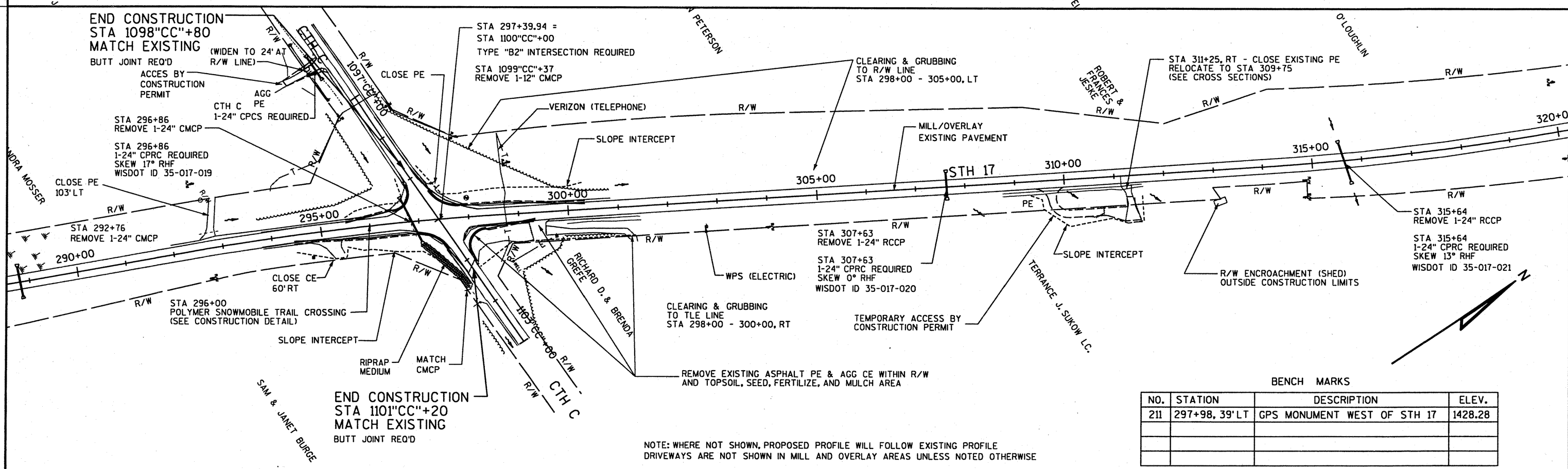


BENCH MARKS

NO.	STATION	DESCRIPTION	ELEV.
31	283+47, 69' RT	6" MAPLE EAST OF STH 17	1427.86

NOTE: WHERE NOT SHOWN, PROPOSED PROFILE WILL FOLLOW EXISTING PROFILE
DRIVEWAYS ARE NOT SHOWN IN MILL AND OVERLAY AREAS UNLESS NOTED OTHERWISE



BENCH MARKS

NO.	STATION	DESCRIPTION	ELEV.
211	297+98, 39' LT	GPS MONUMENT WEST OF STH 17	1428.28

NOTE: WHERE NOT SHOWN, PROPOSED PROFILE WILL FOLLOW EXISTING PROFILE
DRIVEWAYS ARE NOT SHOWN IN MILL AND OVERLAY AREAS UNLESS NOTED OTHERWISE