

STA. 570+70 - STA. 573+65 LT. & RT.
634 LIN. FT. CONCRETE CURB AND GUTTER
30-INCH TYPE 'D' REQ'D.

STA. 573+80 C/L S.T.H. 17 =
STA. 10+00 C.T.H. 'J'

STA. 576+46
P.E. LT. RESTORE
1' - 18"x26" C.P. REQ'D.

STATE PROJECT NUMBER 903I-04-70	SHEET NO. 5.4
PLAN AND PROFILE STA. 569+00 - STA. 584+00 S.T.H. 17 LINCOLN COUNTY	

BEGIN CONSTRUCTION
STA. 15+70

STA. 569+00
P.E. LT. RESTORE

STA. 572+20
P.E. LT. RESTORE

STA. 573+00
P.E. LT. RESTORE

STA. 570+90
P.E. LT. RESTORE

sta. 574+50
P.E. RT. RESTORE

STA. 569+81
P.E. RT. RESTORE

STA. 571+60
P.E. RT. RESTORE

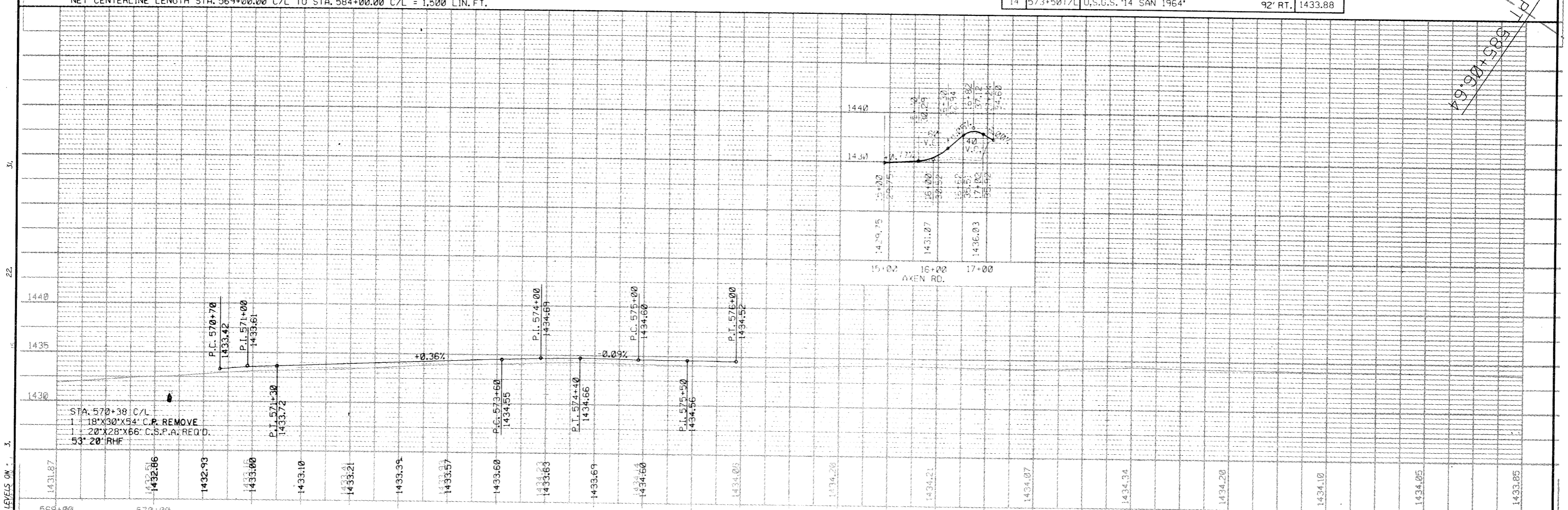
CURVE 7
PI STA 579+38.509 (A)
DELTA= 48°35'17.99" RT.
D= 4° 0' 0.00"
T=646.575
L=1214.708
R=1432.394
PC STA 572+31.934 (A)
PT STA 588+06.642 (A)
S.E.-SEE X-SECTIONS

STA. 573+90 - STA. 575+50 LT. & RT.
372 LIN. FT. CONCRETE CURB AND GUTTER
30-INCH TYPE 'D' REQ'D.

STA. 578+50 C/L S.T.H. 17 =
STA. 17+24 C/L AXEN RD.
TYPE 'C' MODIFIED INTERSECTION CONSTRUCT
155 LIN. FT. CONCRETE CURB AND GUTTER
36" TYPE 'D' REQ'D.

BENCH MARKS			
NO.	STATION	DESCRIPTION	ELEV.
14	573+501/L	U.S.G.S. '14 SAN 1964'	92' RT. 1433.88

NET CENTERLINE LENGTH STA. 569+00.00 C/L TO STA. 584+00.00 C/L = 1,500 LIN. FT.



STA. 570+30 C/L
1 - 18"x30"x54" C.P. REMOVE
1 - 20"x28"x66" C.S.P.A. REQ'D.
53' 20" RHF