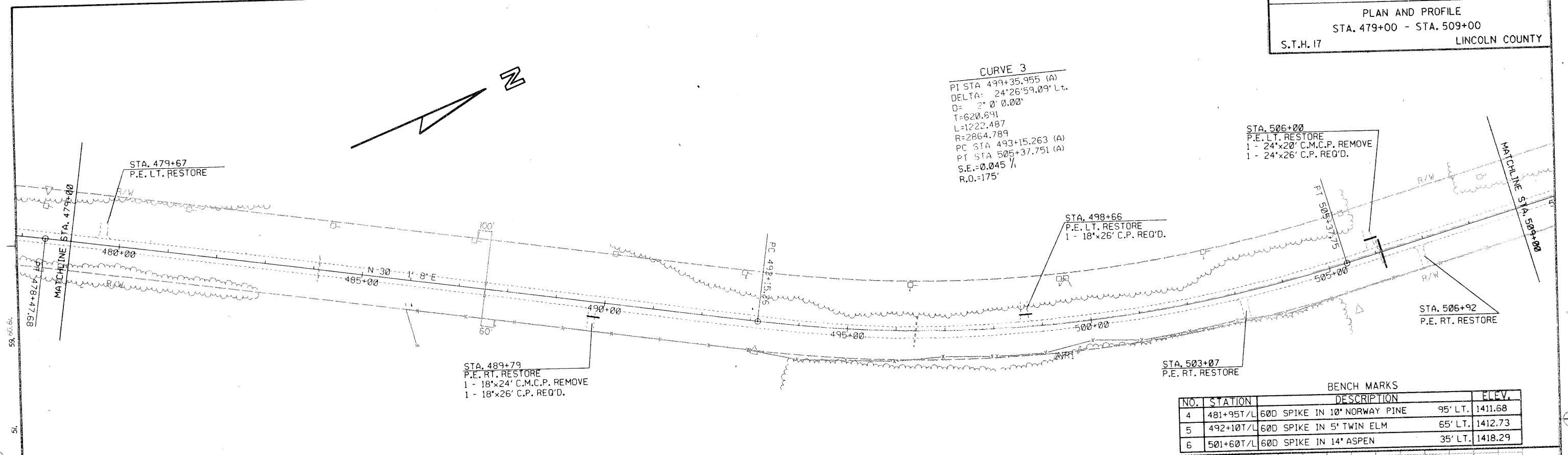


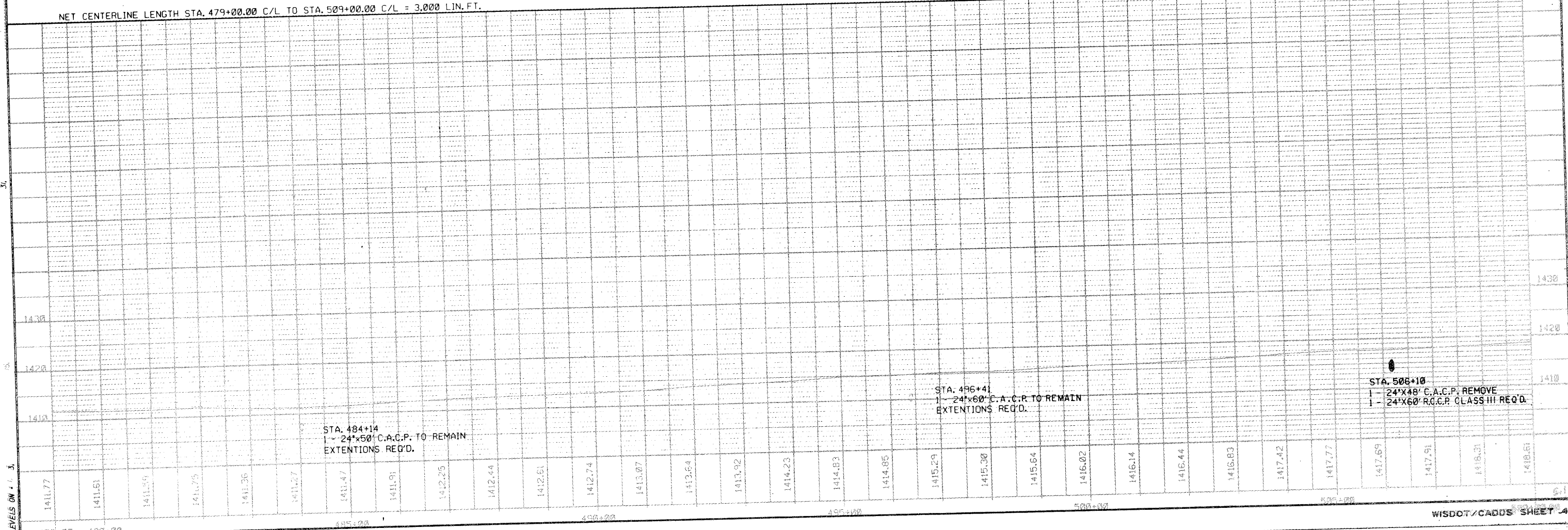
CURVE 3
 PI STA 499+35.955 (A)
 DELTA: 24°26'59.09" Lt.
 D= 2° 0' 0.00"
 T=620.691
 L=1222.487
 R=2864.789
 PC STA 493+15.263 (A)
 PT STA 505+37.751 (A)
 S.E.=0.045 %
 R.O.=175'



BENCH MARKS

NO.	STATION	DESCRIPTION	ELEV.
4	481+95T/L	600 SPIKE IN 10" NORWAY PINE	95' LT. 1411.68
5	492+10T/L	600 SPIKE IN 5" TWIN ELM	65' LT. 1412.73
6	501+60T/L	600 SPIKE IN 14" ASPEN	35' LT. 1418.29

NET CENTERLINE LENGTH STA. 479+00.00 C/L TO STA. 509+00.00 C/L = 3,000 LIN. FT.



STA. 484+14
 24'x50' C.A.C.P. TO REMAIN
 EXTENSIONS REQ'D.

STA. 496+41
 24'x60' C.A.C.P. TO REMAIN
 EXTENSIONS REQ'D.

STA. 506+10
 24'x48' C.A.C.P. REMOVE
 24'x60' R.C.C.P. CLASS III REQ'D.