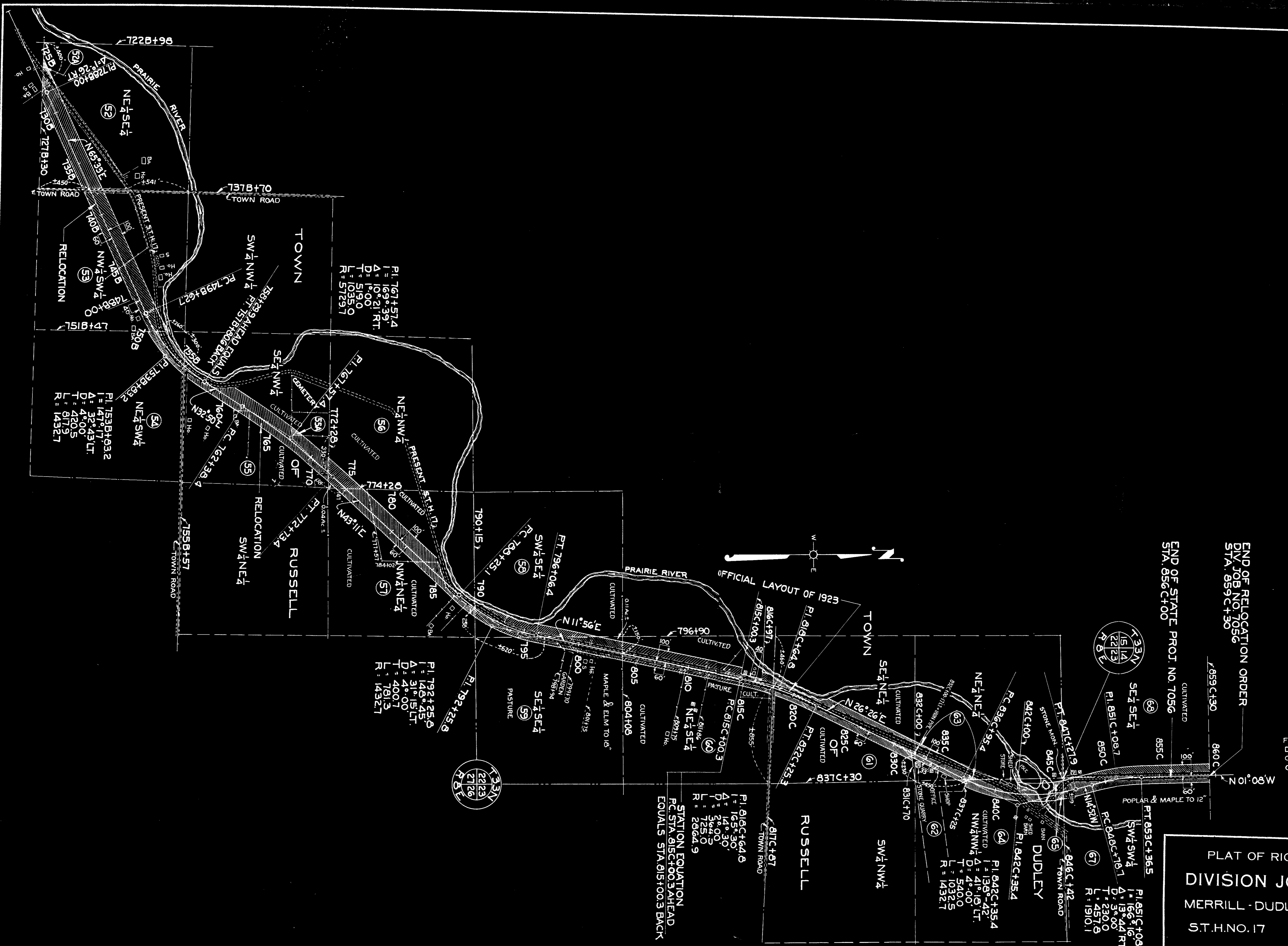


FIELD ROAD DIST. NO.	STATE	STATE PROJ. NO.	SHEET NO.	TOTAL SHEETS
4	WISC.	7056	7	

DIVISION JOB NO. 7056



END OF RELOCATION ORDER  
DIV. JOB NO. 7056  
STA. 859C+30

END OF STATE PROJ. NO. 7056  
STA. 856C+00

FIELD BOOKS: 7886-7887 & 7913  
DRAWN BY: M.B.B. FEB 1937  
COMPUTED BY: M.B.B.  
CHECKED BY: W.E.T.

PLAT OF RIGHT OF WAY REQUIRED  
**DIVISION JOB NO. 7056**  
MERRILL - DUDLEY ROAD  
S.T.H.NO. 17 LINCOLN COUNTY



STATION EQUATION  
PC STA. 815C+00.3 AHEAD  
EQUALS STA. 815+00.3 BACK

P1. 767+57.4  
I = 169° 39'  
A = 10° 21' RT.  
D = 1'-00'  
T = 519.0  
L = 1035.0  
R = 5723.7

P1. 753B+93.2  
I = 147° 17'  
A = 32° 43' LT.  
D = 4'-00'  
T = 420.5  
L = 1432.7  
R = 1432.7

P1. 792+25.0  
I = 148° 45'  
A = 31° 15' LT.  
D = 4'-00'  
T = 400.7  
L = 781.3  
R = 1432.7

P1. 842C+35.4  
I = 136° 42'  
A = 41° 16' LT.  
D = 4'-00'  
T = 540.0  
L = 1032.5  
R = 1432.7