

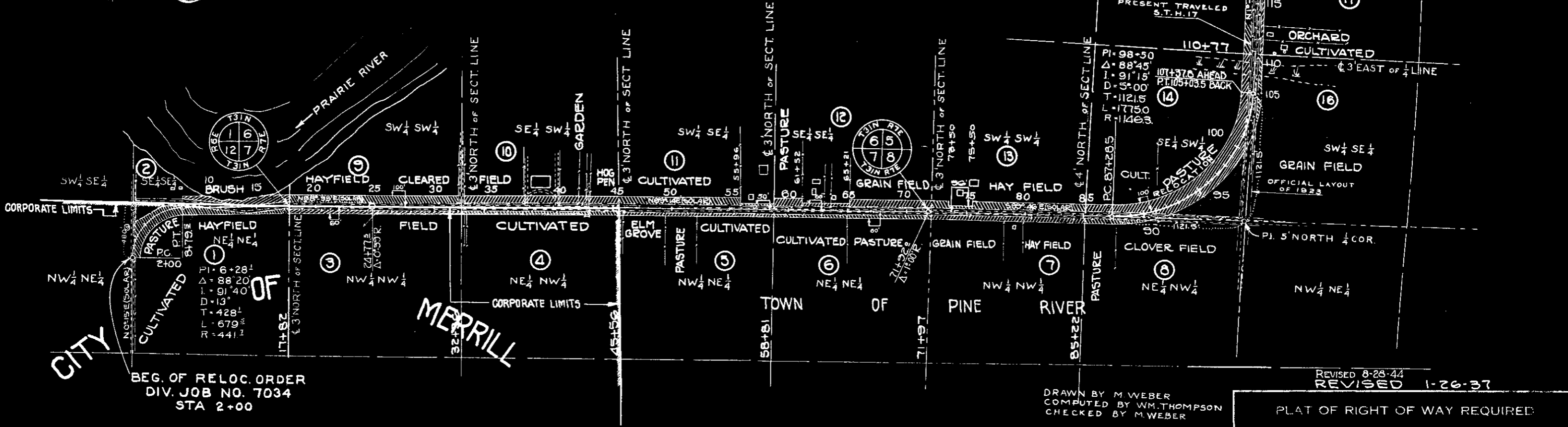


STA 276+42 END OF
USWPH PROJ. W.P.S.A. 618
EQUALS BEG. OF STATE PROJ. No. 7056
OFFICIAL LAYOUT

EQUATION
101+37.8 AHEAD=
105+03.5 BACK
LOCATION SKETCH
END OF RELOC. ORDER
DIV. JOB NO. 7034 - STA 322+60 EQUALS
BEG. OF RELOC. ORDER DIV. JOB No. 7056

BEG. OF RELOC. ORDER
DIV. JOB NO. 7034 - STA 2+00

TOWN OF MERRILL



BEG. OF RELOC. ORDER
DIV. JOB NO. 7034
STA 2+00

DRAWN BY M. WEBER
COMPUTED BY WM. THOMPSON
CHECKED BY M. WEBER

REVISED 8-28-44
REVISED 1-26-37

PLAT OF RIGHT OF WAY REQUIRED
DIVISION JOB NO. 7034
MERRILL - DUDLEY ROAD
S.T.H. NO. 17 LINCOLN COUNTY
SCALE

