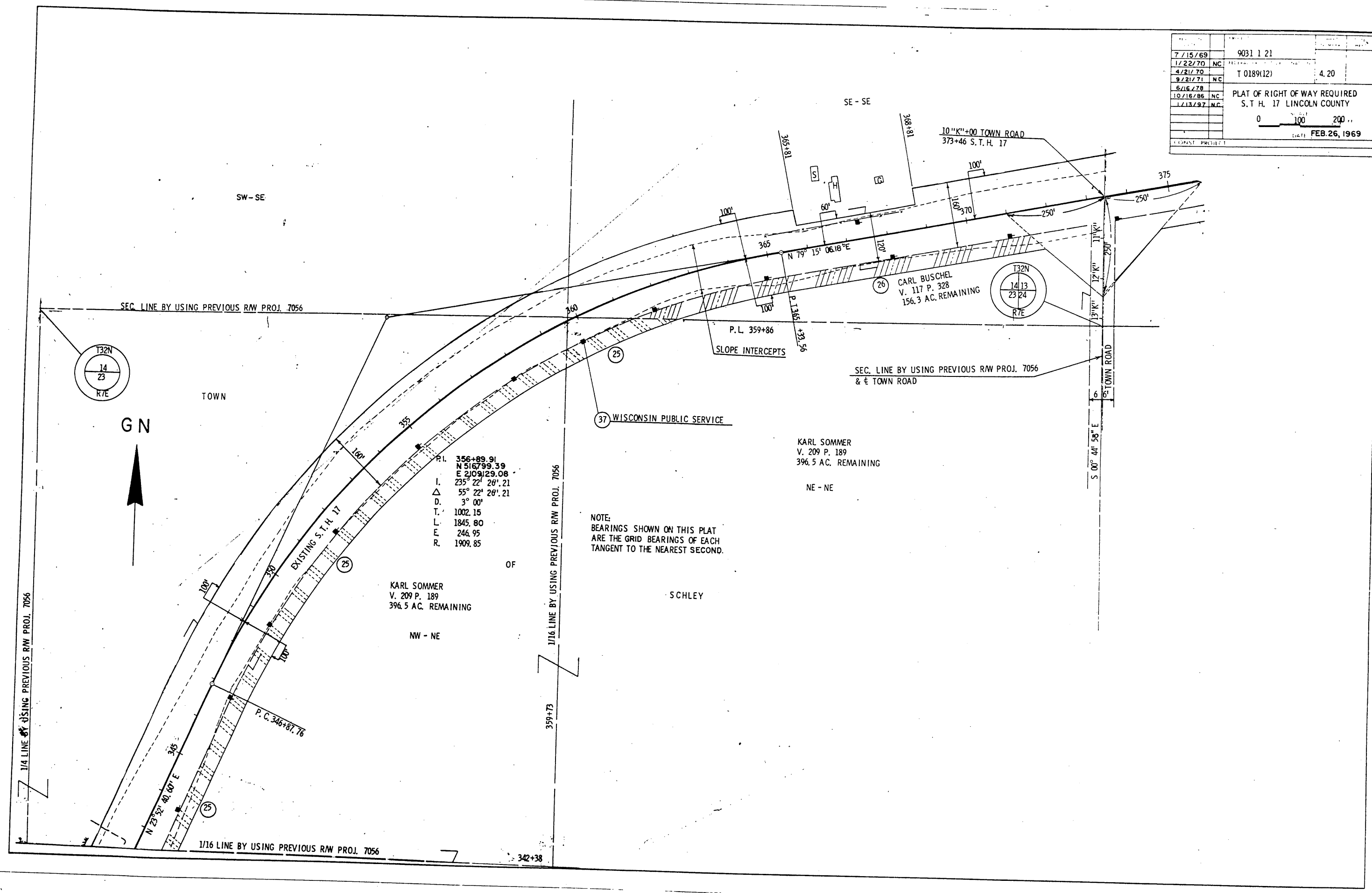


7/15/69	9031 1 21	
1/22/70	NC	
4/21/70		4.20
9/21/71	NC	T 0189(12)
5/16/78		
10/16/86	NC	PLAT OF RIGHT OF WAY REQUIRED
1/13/97	NC	S. T. H. 17 LINCOLN COUNTY
		0 100 200
		FEB. 26, 1969



P.I. 356+89.91
 N 5167.99.39
 E 2109.129.08
 I. 235° 22' 20".21
 Δ 55° 22' 20".21
 D. 3° 00'
 T. 1002.15
 L. 1845.80
 E. 246.95
 R. 1909.85

NOTE:
 BEARINGS SHOWN ON THIS PLAT
 ARE THE GRID BEARINGS OF EACH
 TANGENT TO THE NEAREST SECOND.



70-1-1-1
 red plat - 1969