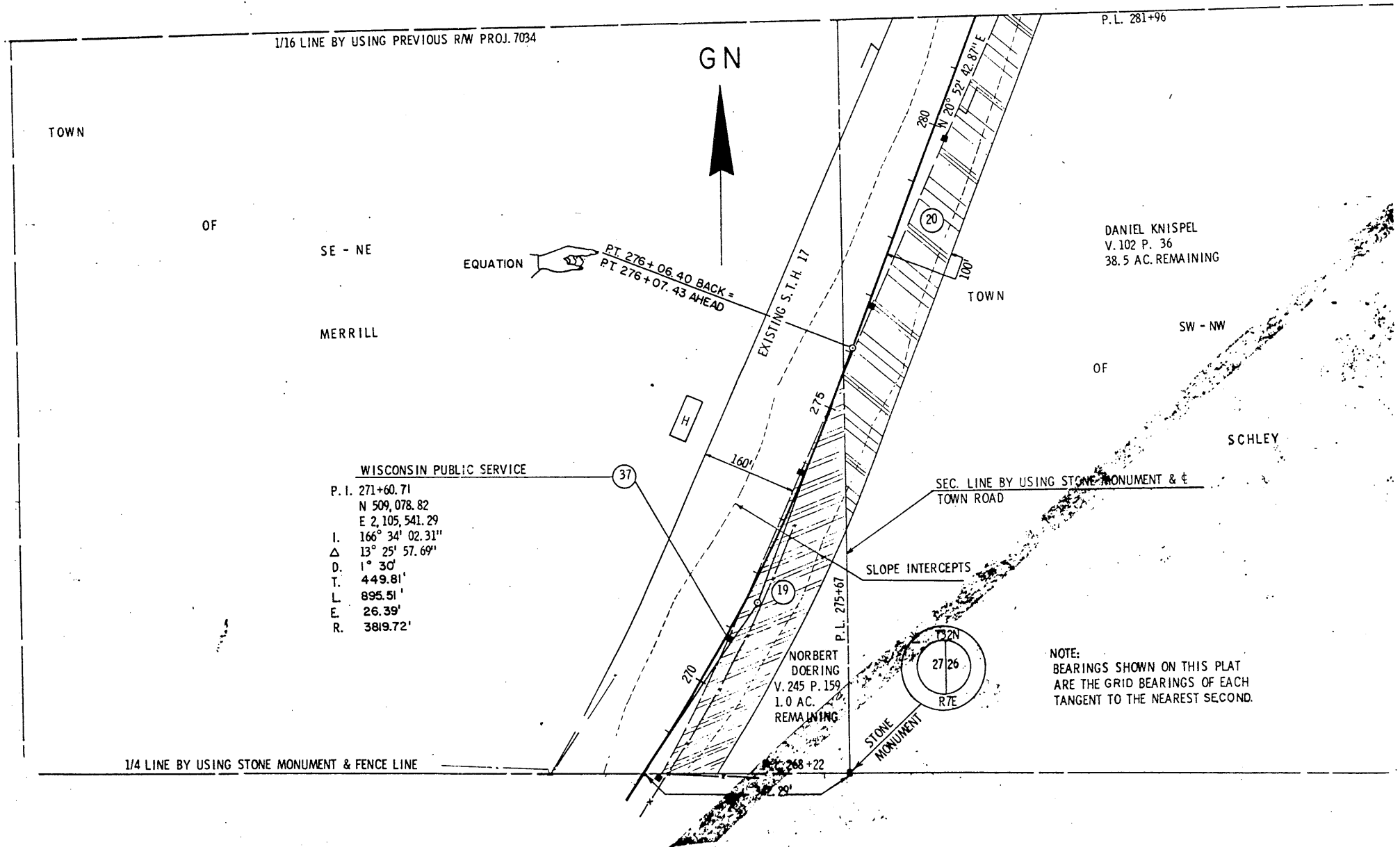


REVISION DATE	PROJECT NO	SHEET NUMBER	TOTAL SHEETS
7/15/69	9031 1 21		
1/22/70 INC	FEDERAL PROJECT DESIGNATION		
4/21/70 INC	T 0189(12)	4.15	
9/21/71 INC			
5/16/78	PLAT OF RIGHT OF WAY REQUIRED S.T.H. 17 LINCOLN COUNTY		
10/16/85 INC			
1/13/97 INC			
		0 100 200	
		DATE	FEB. 26, 1969
EXHIBIT PROJECT			



1/16 LINE BY USING PREVIOUS R/W PROJ. 7034

GN

TOWN

OF

SE - NE

MERRILL

P.L. 281+96

DANIEL KNISPEL  
V. 102 P. 36  
38.5 AC. REMAINING

OF

SW - NW

SCHLEY

WISCONSIN PUBLIC SERVICE

- P. I. 271+60.71
- N 509,078.82
- E 2,105,541.29
- I. 166° 34' 02.31"
- Δ 13° 25' 57.69"
- D. 1° 30'
- T. 449.81'
- L. 895.51'
- E. 26.39'
- R. 3819.72'

SEC. LINE BY USING STONE MONUMENT & TOWN ROAD

SLOPE INTERCEPTS

NORBERT DOERING  
V. 245 P. 159  
1.0 AC. REMAINING

NOTE:  
BEARINGS SHOWN ON THIS PLAT  
ARE THE GRID BEARINGS OF EACH  
TANGENT TO THE NEAREST SECOND.

1/4 LINE BY USING STONE MONUMENT & FENCE LINE

*Suppl. to 9031 1 21  
Index Pg. 4 70189 12*