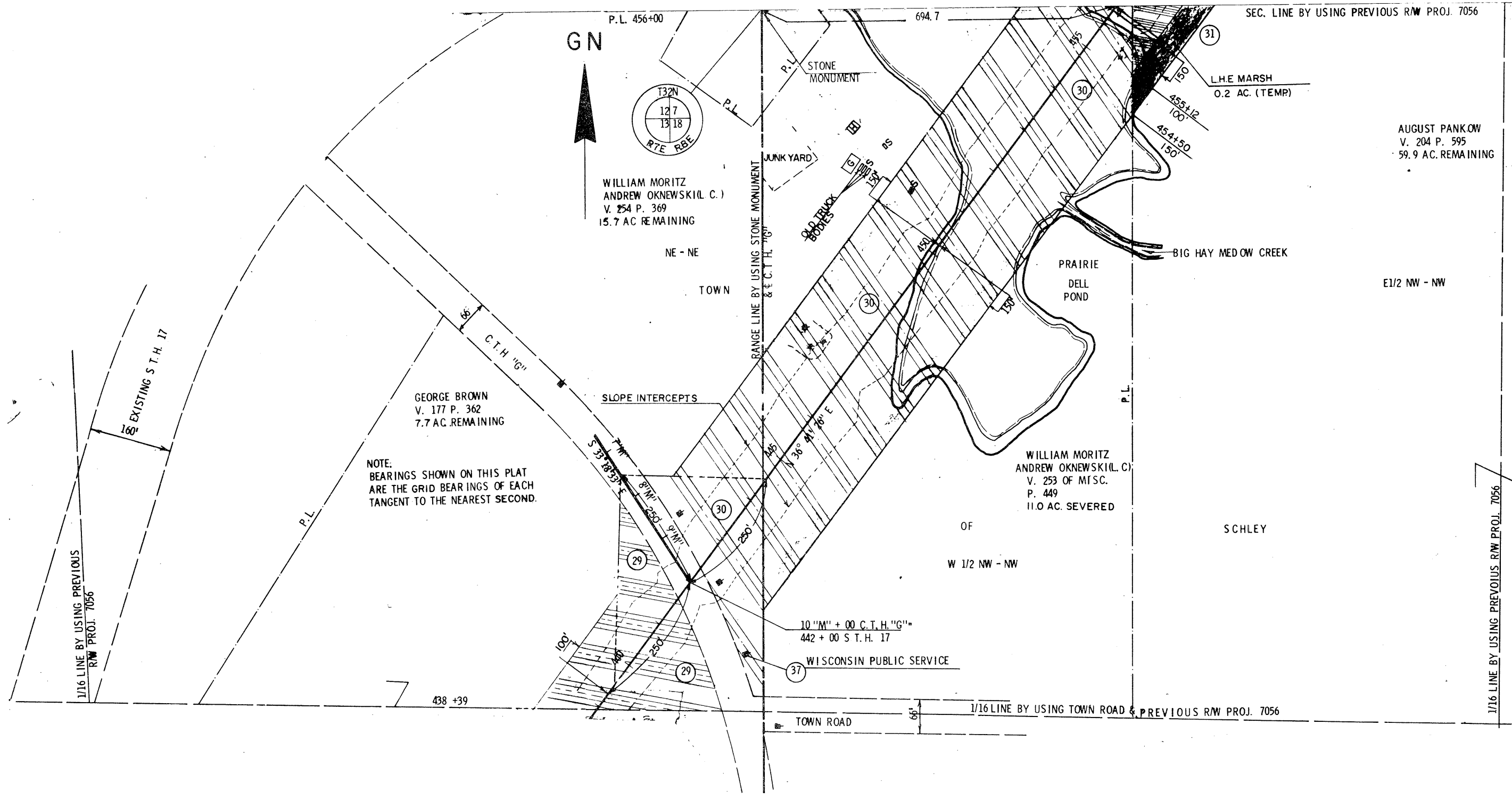
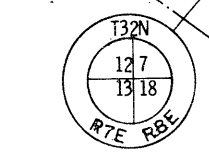


DATE	PROJECT ID	SHEET NUMBER
7/15/69	9031 1 21	
1/22/70	NC	
4/21/70	NC	
9/21/71	NC	
	FEDERAL PROJECT DESIGNATION	4 24
	T 0189(12)	
PLAT OF RIGHT OF WAY REQUIRED		
S.T.H. 17 LINCOLN COUNTY		
SCALE 0 100 200 FT		
DATE FEB. 26, 1969		
CONST. PROJECT 9031-1-70 50189(12) 4.4-33		



NOTE:  
BEARINGS SHOWN ON THIS PLAT  
ARE THE GRID BEARINGS OF EACH  
TANGENT TO THE NEAREST SECOND.

GN



WILLIAM MORITZ  
ANDREW OKNEWSKI (L.C.)  
V. 254 P. 369  
15.7 AC REMAINING

NE - NE  
TOWN

GEORGE BROWN  
V. 177 P. 362  
7.7 AC REMAINING

WILLIAM MORITZ  
ANDREW OKNEWSKI (L.C.)  
V. 253 OF MISC.  
P. 449  
11.0 AC SEVERED

OF  
W 1/2 NW - NW

SCHLEY

E1/2 NW - NW

WISCONSIN PUBLIC SERVICE

TOWN ROAD

1/16 LINE BY USING PREVIOUS  
RW PROJ. 7056

EXISTING S.T.H. 17

P.L.

C.T.H. "G"

RANGE LINE BY USING STONE MONUMENT  
& C.T.H. "G"

P.L. 456+00

694.7

SEC. LINE BY USING PREVIOUS RW PROJ. 7056

L.H.E. MARSH  
0.2 AC. (TEMP)

BIG HAY MEADOW CREEK

PRAIRIE  
DELL  
POND

P.L.

1/16 LINE BY USING PREVIOUS RW PROJ. 7056

1/16 LINE BY USING TOWN ROAD & PREVIOUS RW PROJ. 7056

438 +39