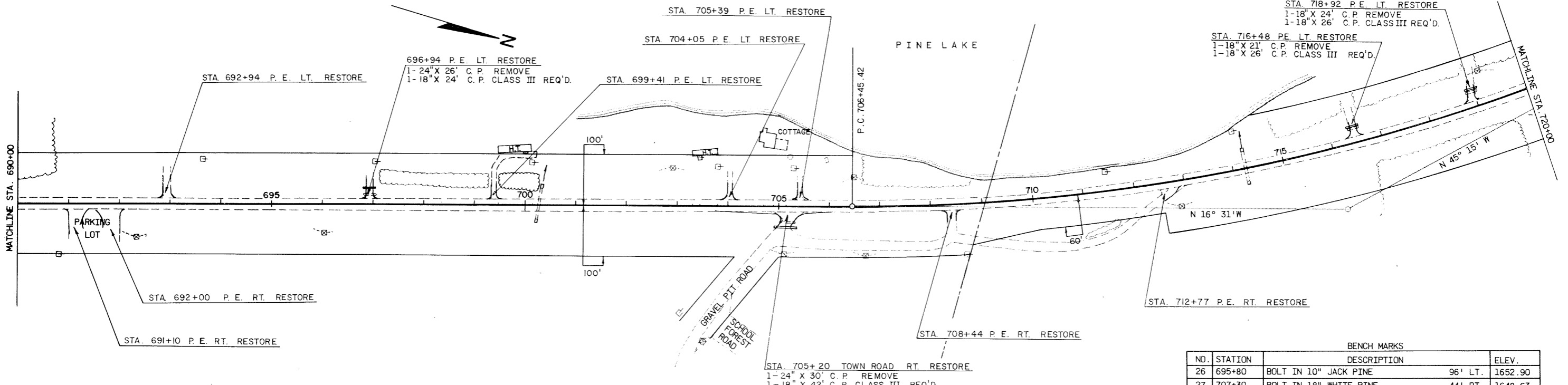


P.I. 716+23.71
 Δ 28° 43' 52.5" LT.
 D. 1° 30'
 T. 978.29'
 L. 1915.42'
 S.E. 0.0361'/1'
 R.O. 175'

STATE PROJECT NUMBER	SHEET NO.
9031-3-71	5.6
PLAN & PROFILE STA. 690+00 - STA. 720+00 FOR	
S.T.H. 17	LINCOLN COUNTY



NET CENTERLINE LENGTH STA. 690+00 - STA. 720+00 = 3,000.00 LIN. FT.

BENCH MARKS			
NO.	STATION	DESCRIPTION	ELEV.
26	695+80	BOLT IN 10" JACK PINE	96' LT. 1652.90
27	707+30	BOLT IN 18" WHITE PINE	44' RT. 1648.63
28	719+30	BOLT IN 10" SCOTCH PINE	72' LT. 1652.28

UNCL.	0 CU. YD.
FILL	6,883 CU. YD.
SHG.	40%
BORROW	9,636 CU. YD.

