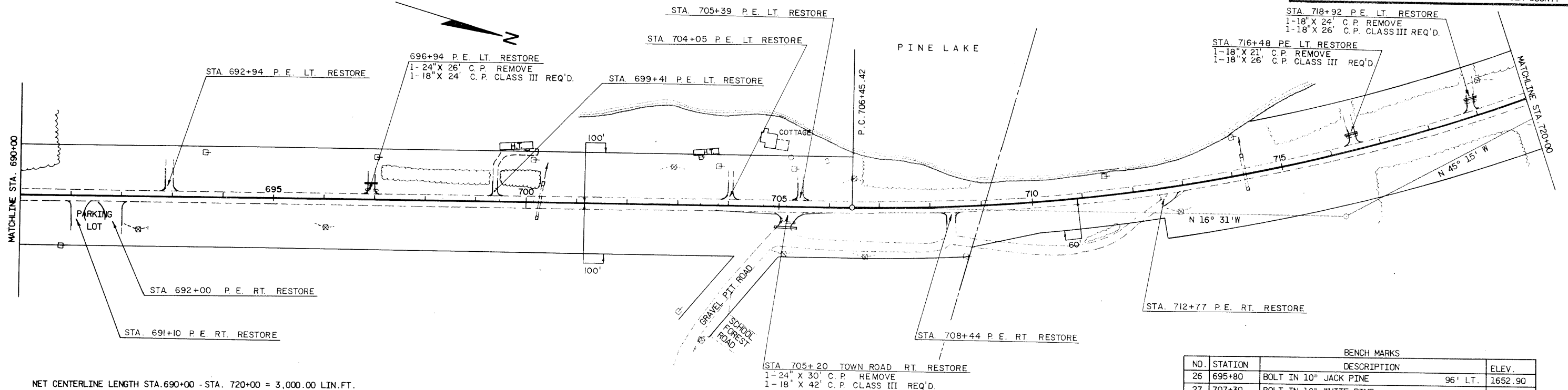


P.I. 716+23.71  
 Δ 28° 43' 52.5" LT.  
 D. 1° 30'  
 T. 978.29'  
 L. 1915.42'  
 S.E. 0.036'/'  
 R.O. 175'

STATE PROJECT NUMBER	SHEET NO.
9031-3-71	5.6
PLAN & PROFILE STA. 690+00 - STA. 720+00 FOR	
S.T.H.17	LINCOLN COUNTY



NET CENTERLINE LENGTH STA. 690+00 - STA. 720+00 = 3,000.00 LIN. FT.

BENCH MARKS			
NO.	STATION	DESCRIPTION	ELEV.
26	695+80	BOLT IN 10" JACK PINE	96' LT. 1652.90
27	707+30	BOLT IN 18" WHITE PINE	44' RT. 1648.63
28	719+30	BOLT IN 10" SCOTCH PINE	72' LT. 1652.28

UNCL. 0 CU. YD.  
 FILL 6,883 CU. YD.  
 SHG. 40%  
 BORROW 9,636 CU. YD.

