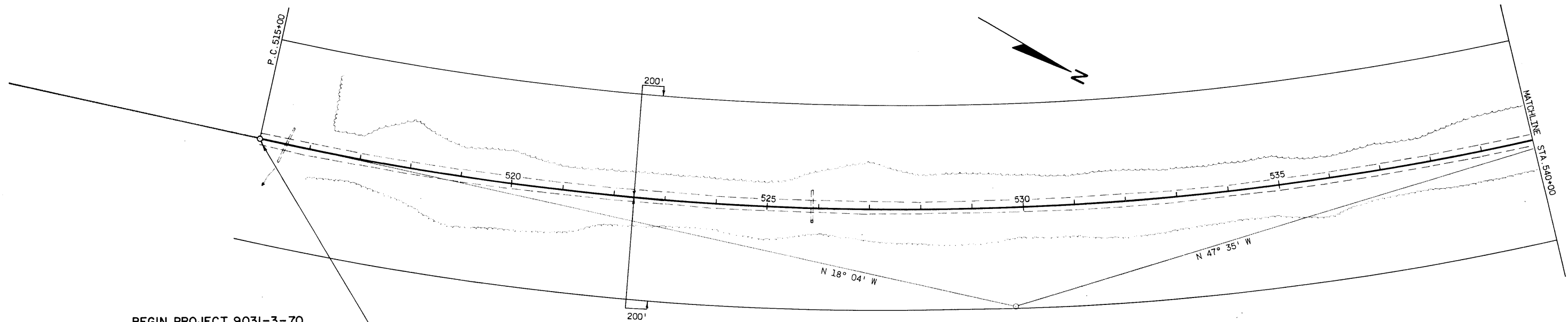


P.I. 530+09.81
 Δ 29°31'30" LT.
 D. 1°00'
 T. 1509.81'
 L. 2952.50'
 SE. 0.027'/'
 RO. 175'

STATE PROJECT NUMBER	SHEET NO.
9031-3-71	5
PLAN & PROFILE	
STA. 515+00 - STA. 540+00	
S.T.H. 17	FOR LANGLADE COUNTY



BEGIN PROJECT 9031-3-70
 STA. 515+00

NET CENTERLINE LENGTH STA. 515+00 - STA. 540+00 = 2,500.00 LIN. FT.

BENCH MARKS				
NO.	STATION	DESCRIPTION	ELEV.	
10	518+50	BOLT IN 10" ASPEN	80' RT.	1646.81
11	531+25	BOLT IN 14" ASH	75' RT.	1675.15
12	541+00	BOLT IN 14" WHITE BIRCH	65' LT.	1668.00

