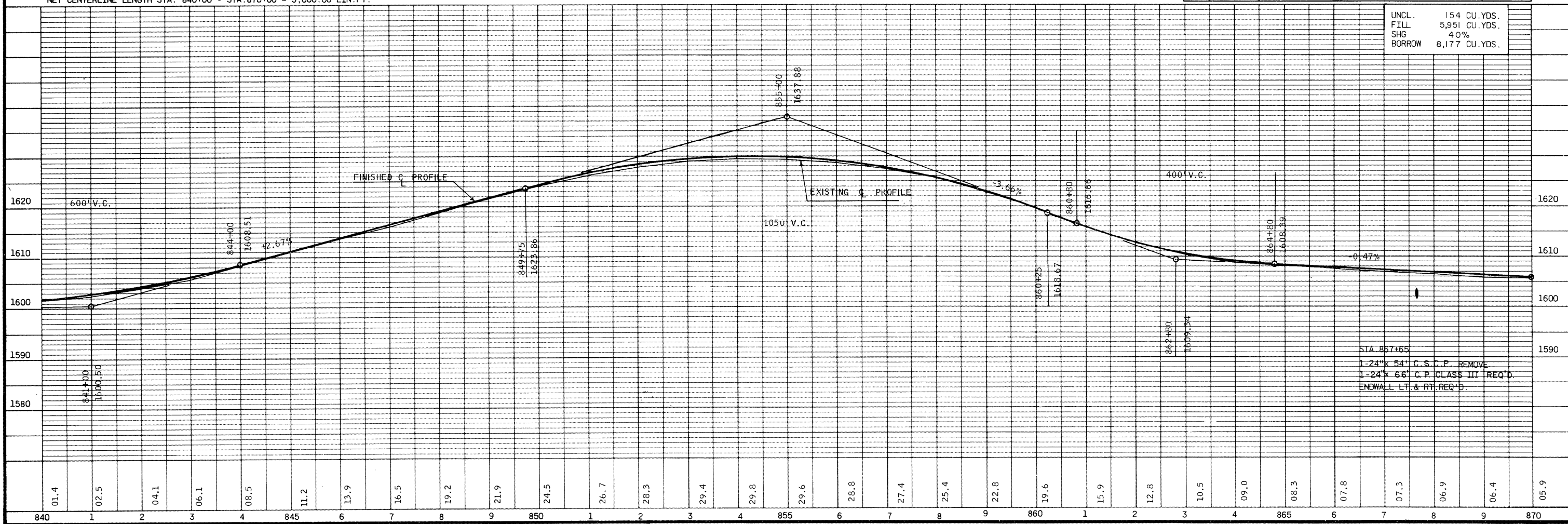


NO.	STATION	DESCRIPTION	ELEV.
39	840+25	BOLT IN 18" ASPEN	1598.67
40	851+10	BOLT IN 10" WHITE BIRCH	1628.18
41	860+05	R.R. SPIKE IN 12' WHITE BIRCH	1617.65
42	868+60	U.S.G.S. "42" SAN 1964"	1600.74

NET CENTERLINE LENGTH STA. 840+00 - STA. 870+00 = 3,000.00 LIN. FT.



UNCL.	154 CU. YDS.
FILL	5,951 CU. YDS.
SHG	40%
BORROW	8,177 CU. YDS.