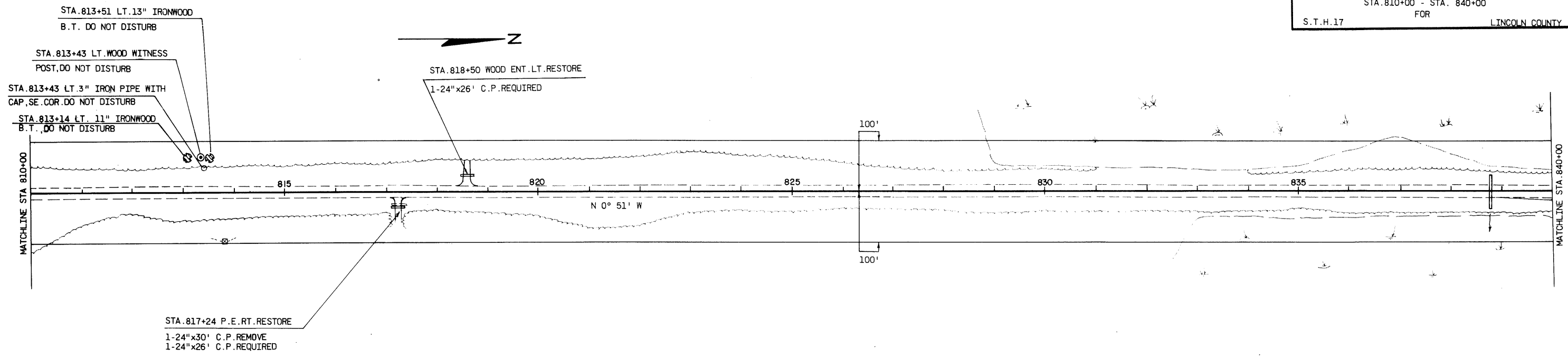


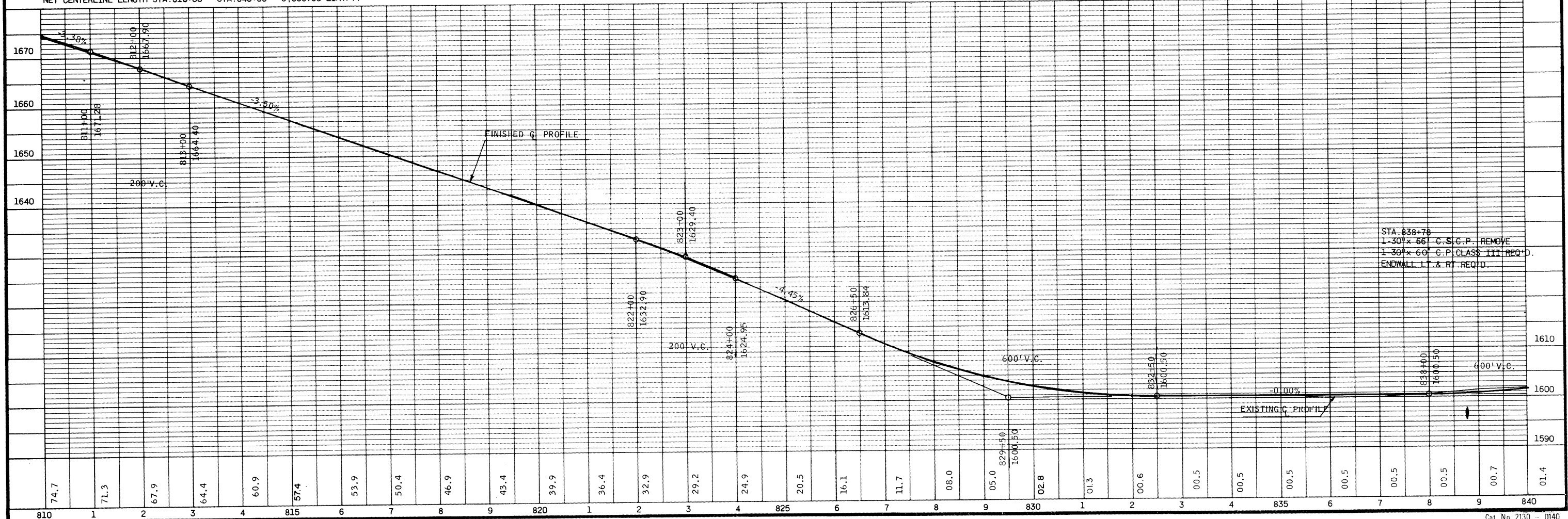
STATE PROJECT NUMBER	SHEET NO.
9031-3-71	5.10
PLAN & PROFILE	
STA. 810+00 - STA. 840+00	
FOR	
S.T.H.17	LINCOLN COUNTY



BENCH MARKS

NO.	STATION	DESCRIPTION	ELEV.
37	819+65	BOLT IN 6" BASSWOOD	64' RT. 1638.73
38	829+70	BOLT IN 6" WHITE BIRCH	63' RT. 1596.06

NET CENTERLINE LENGTH STA. 810+00 - STA. 840+00 = 3,000.00 LIN. FT.



STA. 838+00  
 1-30" x 66" C.S.C.P. REMOVE  
 1-30" x 60" C.P. CLASS III REQ'D.  
 ENDWALL LT & RT REQ'D.